

## Cairns Cruise Terminal

In the coming cruising season the Ports North and Queensland Government expect over 40 cruise liners to visit Cairns. Reportedly each vessel helps inject over one million dollars into the local economy.

To cater for the increase in cruise ships the Queensland Government is financing the refurbishment of the historical wharf precinct to provide a modern cruise terminal.

Leda in conjunction with Hutchinson Builders (the builder) is supplying and installing high security protection road blockers and bollard systems to the vehicular access points.



*Similar Leda product installed at the Cairns Reef Fleet Ferry Terminal*

As the security protection will normally only be required when vessels are in port it was important for Leda to provide the consultants for the project with details and recommendations on equipment best suited for the harsh environmental conditions of the site.

## Adelaide Convention Centre



Leda's South Australian staff recently successfully installed two new 6 metre Track Gates to the entry and exit service entrances at the Adelaide Convention Centre. The gates are extremely tall at 3.0 metres and each incorporate a Pedestrian Gate as well.

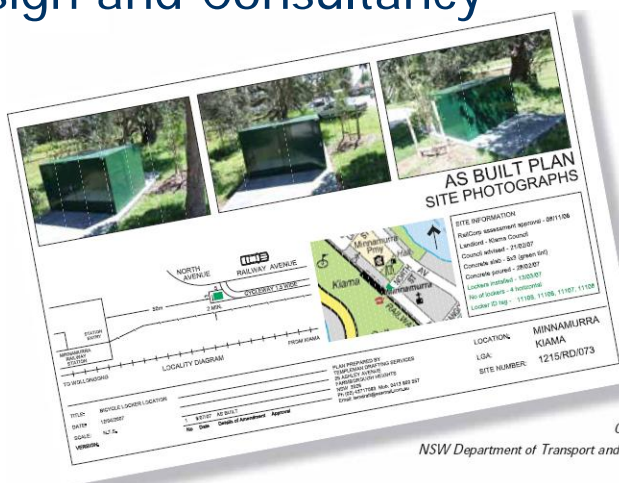
No civil works were required as the gates had to be retro-fitted to existing concrete structures. As the entrance gate needed to open uphill we designed and installed a counter balance pulley system that allows the gate to be opened on power fail and also provided the necessary controls for OH&S requirements.

## Bicycle Parking Design and Consultancy

Leda's ongoing commitment to encourage greater use of bicycles throughout Australia received a further boost with the introduction of our new consultancy and design services.

Leda is assisting local government and developers to design and install the appropriate end of journey parking facilities for cyclists.

This can entail site audits of existing facilities, surveys with cyclists and the preparation of comprehensive reports and recommendations including custom designed bike racks.



*Courtesy of the NSW Department of Transport and Infrastructure*

## Inside this issue



**New Newey Barrier**



**Adelaide Convention Centre**



**Cairns Cruise Terminal**



**Lighting Bollards  
Serving a Dual Purpose**

**Need more  
Information visit  
our website  
or phone  
Leda  
Security Products  
on 1300 780 450**

One such council to recently utilise Leda's services was Stonnington City Council in Melbourne.

## Queensland Rail Bicycle Lockers



Leda was pleased to be selected as the supplier to the latest major tender to manufacture and supply bicycle parking lockers to various railway stations on Queensland railways rail network.

The majority of these horizontal bicycle lockers are destined for Varsity Lakes a new railway station on the southern link and Richlands railway station.

Our BSL18D double horizontal lockers are manufactured from galvanised zincalume sheet metal and fitted with vandal resistant master keyed locking systems.

Leda's bicycle lockers are also supplied to the metropolitan rail networks and bus interchanges in Melbourne and Sydney. They are designed to provide cyclists with secure long term parking for their bicycles while they commute to work on public transport.

## Jewish War Memorial and Community Centre

Leda is proud to have been appointed once again as the preferred perimeter security partner to another of Australia's Jewish icons, the NSW Jewish War Memorial and Jewish Museum in Darlinghurst Sydney through Kane Constructions.

The museum is housed in the historic Maccabean Hall, built to commemorate NSW Jewish men and women who served in WW1 and to honour the memory of those who lost their lives.

Extensive consultations with the Sydney City Council and other stake holders revealed that while the desire to protect such an icon were strong, the Council was particularly focussed on achieving aesthetic milestones reflection both the museum's heritage and harmonisation of the overall city streetscape.

The solution was to deploy Leda's composite-injected Bollards (168mm in diameter) which had previously undergone extensive impact testing in the UK Governments Hostile Vehicle Mitigation Crash Program. These Bollards while physically smaller, were designed and tested to sustain significantly larger energy loads during vehicle crash tests, including a high degree of cutting resistance.



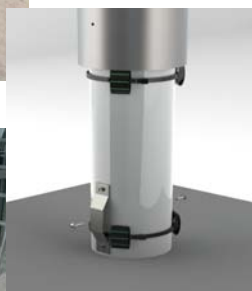
Extensive planning and investigation preceded the civil works as there were concerns about the difficulty in trying to install compliant Bollard reinforcement footings in a historic area rich in service assets and with potential historic significance. Solutions were engineered based on PAS68 specifications and installed in line with the PAS69 guidelines.



*Before*



*After*



## Standardising Bollard Design

With over 150 tyre outlets across Australia one major retailer has embarked on a program to standardise the visual appearance of their sites nationally to embellish their brand and image.

Investigations revealed an assortment of various Bollards having been installed over the years utilising different pipe diameters, heights and colours.

In this instance the client decided to use our stainless steel sleeves which were cut at the base to accommodate the slope in the concrete pavement.

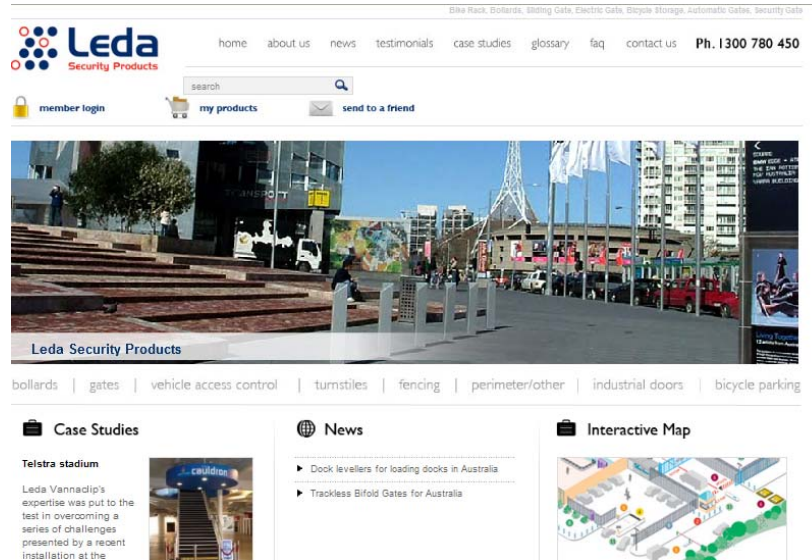
Leda has developed a unique fixing system to cater for these situations and is sure this innovative solution will appeal to many other retailers wishing to standardise their Bollard designs.



## New Leda Website

Leda's new website at [www.ledasecurity.com.au](http://www.ledasecurity.com.au) goes live in June 2010. The site was designed with specifiers in mind and all product pages can be downloaded or emailed in pdf format to use as brochures or specifications. There are hundreds of new pictures of products installed and navigation to all of Leda's products has never been easier. For the first time also, video is across the site and great to see speeds of our automated equipment in action. Lastly, a number of new products in our doors and loading bay section are available for the first time.

Visit <http://www.ledasecurity.com.au> now and book mark it for your next project.



## GSM Technology for Gate Openings

*"Imagine using your mobile phone as a remote control"? now you can.*

Leda is offering this unique system as an option on all gate installations to provide time management and cost saving benefits.

While Leda has had the available technology for some time it is now being recognised as an effective alternative opening system by local government, government utilities and the mining industry for remote gate installations.

Operating a gate remotely using a mobile phone can save lengthy trips to sites to provide vehicular access for service vehicles, let out motorists that have overstayed their welcome past closing times in national parks or simply to help a fellow employee access or exit the site.

While we offer the option on all new installations, Leda technicians can retrofit the required electronics to existing control panels to provide you with this convenient time saving operating method on existing sites.



## Lighting Bollards – Serving a Dual Purpose

While practically all Bollard installations have one single purpose *"to prevent vehicle ingress"* these Leda Bollards installed in a leading Sydney shopping centre entrance provide both security (high impact resistance) and illumination functions.

The Lighting Bollards are manufactured using heavy duty stainless steel pipe sections. The Leda Lighting Bollard design also features vertical apertures, with an internal 6mm polycarbonate lens that provides 180 or 360 degree illumination. Another major feature is the high vandal resistance that Leda's design provides.



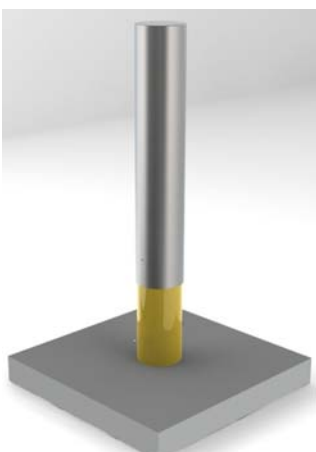
## S/Steel Bollard Sleeves

With global stainless steel prices continually escalating the cost of high security stainless steel Bollards can become very expensive for some applications.

To combat this and provide a suitable alternative Leda's R&D team developed a stainless steel sleeve that can be installed over thick walled mild steel pipe sections to provide high vehicular impact resistance, aesthetics and a more cost effective solution.

Our stainless steel sleeves are available in either 900mm or 1200mm high models.

Easy to install they simply drop over  $\varnothing 150$  (165.1 o/d) mild steel pipe Bollard and either fix into position with epoxy or grub screws. If damaged at any stage they can be economically replaced in minutes.



# New Newey Barrier

Our NSW installation team recently commissioned the first of our 'Newey Barriers' at an undisclosed Australian Federal Government site. The Newey Barrier was installed as part of a broader scope of works involving several stages of hostile vehicle mitigation upgrades. Newey Barriers are tested in compliance to the independent UK Government Vehicle Crash Barrier Standard, PAS 68 and installed in compliance to its sister standard, PAS 69.

Newey Barriers are PAS68 tested and certified to stop a 7.5 tonne vehicle at 48kph. These barriers are available either in models of 3.0 metre and 4.5 meter apertures. The Newey Barrier may be supplied as a manual or fully automated unit (hydraulically-actuated).

Compared to other alternative products the Newey Barrier is proving to be a very cost effective option so much so that it is now being considered on a number of other high profile Federal Government projects under design.



Leda wishes to acknowledge the technical contribution of the UK Government's Centre for the Protection of National Infrastructure (CPNI) in the development of the Newey Barrier.

*No Deep Footing Required  
Photograph supplied courtesy of CPNI*



## Message from the Chairman

Like many other Australian manufacturers, Leda Security Products is pleased to see the worst of the global financial crisis behind us.

Thanks to dedication and efforts of our hardworking sales team our order intake has nearly doubled this quarter, which is extremely encouraging and much to the delight of our production and installation staff.

What we are finding is that many major projects which require our high security products that had been on hold are now proceeding.

As part of our ongoing commitment to assist government departments and specifiers we have a new website that recently went live. In addition our new revamped "*Bicycle Parking Handbook*" (version 4) has received an excellent reception by local and state government departments around the country as the leading reference manual in designing and implementing bicycle parking facilities.

Thank you again for your support.



*David R. Matthews, Chairman*



[www.ledasecurity.com.au](http://www.ledasecurity.com.au)

Email [lvsales@l-v.com.au](mailto:lvsales@l-v.com.au)

Toll free 1300 780 450

### NSW

8/185 Briens Rd  
Northmead NSW 2152  
Phone (02) 8413 3410  
Fax (02) 8006 5699

### VIC

2/89 Enterprise Way  
Sunshine West VIC 3020  
Phone (03) 8399 8150  
Fax (03) 8669 0359

### QLD

2/387 Lytton Rd  
Morningside QLD 4170  
Phone (07) 3613 8270  
Fax (07) 3399 5688

### SA

1/5 Tooronga Ave  
Edwardstown SA 5039  
Phone (08) 8374 3266  
Fax (08) 8374 3299