

## Leda Appointed Distributor of ATG Access High Security Bollards



Leda Security Products was recently appointed by ATG Access ([www.atgaccess.com](http://www.atgaccess.com) and [www.atgaccessinc.com](http://www.atgaccessinc.com)) to distribute their high security and anti terrorist bollard systems in Australia.

ATG Access are the undisputed market experts in high security and anti terrorist bollards. Over 24 bollard systems have been impact tested and certified so it is no wonder ATG have been chosen to protect some of the most high profile locations in the world.

Impact testing has been conducted to both PAS 68 (UK) ([www.atgaccess.com](http://www.atgaccess.com)) and ASTM (USA) ([www.atgaccessinc.com](http://www.atgaccessinc.com)) standards with bollards successfully impact tested with vehicle masses up to 30 tonne at speeds up to 80kph.



When it came to finding a suitable partner to distribute and install their products in Australia, the logical choice was Leda Security Products. Like ATG Access, Leda has been pioneering the development and installation of high security bollard systems for over a decade and with the additional ATG Access products can provide security consultants and government authorities with the largest comprehensive range of certified products available in Australia.

## "A Very Very Large Gate"



Too large to fit into a single shot the photograph shows one half of the gate. Commissioned only in January the Bi-Sliding / Bi-Parting entry gate at the Pluto LNG project in Northern West Australia is now fully operational.

With a clear opening of 34.5 metres the multi leaf gate is 2.4 metres high and engineered to meet cyclonic winds that the site could experience.

Leda designed and manufactured the gate for Woodside Burrup Pty Ltd to a very strict set of specifications. Before being shipped it was setup in Leda's Tuggerah facilities and all its systems operationally tested

### Inside this issue



### Leda Appointed Distributor of ATG Access High Security Bollards



### Scissor Lifts going lower than ever



### Winning Bike Racks



### Shallow Mount Bollard System

**Need more Information  
visit our website  
or phone  
Leda  
Security Products  
on 1300 780 450**



## Scissor Lifts going lower than ever

Leda's Brisbane office have two low height scissor lifts being installed early in 2011. Both use designs removing the requirement for a large pit to house the scissor lift under the freight platform. It is quite revolutionary as it removes the requirement to install a pit which previously could not be done on suspended slabs for example.

One of the scissor lifts is being installed in the busy Central Station in Brisbane and the other at the new Audi dealership in Fortitude Valley for Criscom Construction. The scissor lifts are large enough for 8 pallets or a car and when lowered have the low height above ground of only 50mm. The cost savings on installation for this unique design are significant and of benefit to building designers and existing sites alike.



Both clients had to evaluate the operational and safety requirements of the equipment for their site. Additionally, Leda's Brisbane based service team are in place to ensure the maintenance and safety of equipment for many years to come.

Leda's scissor lifts are part of its extensive range of loading dock solutions ranging from dock levellers, shelters and panel lift doors to dock safety rails, bumpers and high speed doors.

## "Tyre Spikes that Work"

Leda has been manufacturing and installing Tyre spike systems at Australian Ports for many years. While most are pneumatically operated automatic systems they can also be supplied for manual operation.

As a vehicular access control system "LEDA TYRE SPIKES" are unique in that they are nearly always installed to stop unauthorised vehicles exiting a site.

In the application pictured "DP World" approached Leda to install a more robust system than existed to prevent unauthorised vehicles gaining access through the exit lane of their car park.



## "Winning Bike Racks"

Leda recently manufactured three of the winning bike racks at three various Western Sydney locations for the NSW Roads and Traffic Authority.

The Minister for Roads, Hon David Borger MP, unveiled the 'Bike Rack as Art' winning entry 'Derailed' at the Parramatta War Memorial Swimming Centre on the 18<sup>th</sup> February.

The 'Bike Rack as Art' design competition, organised by the Powerhouse Museum (PHM) and supported by the RTA, invited creative designers to develop a revolutionary bike rack which would be artistic as well as a user-friendly bicycle facility. Designers were asked to consider the environments of the Parramatta, Georges and Nepean River areas where the winning rack would be installed.

Almost 150 entries were received making it difficult for the judging panel chaired by Dr Richard Goodwin, University of NSW College of Fine Arts to decide the winning entry.

Leda being Australia's largest manufacturer of bicycle parking equipment was the logical go to company to manufacture the winning bike rack designs.





# Shallow Mount Bollard System – only 112mm deep



Installing high security and anti terrorist bollard systems is normally required around the perimeter of high profile and government buildings located in built up or CBD locations.

To achieve the required impact resistance more often than not this involves trying to incorporate deep concrete footings for the bollards around other services. This can lead to compromising the structural integrity of the footing or making it impossible to successfully install an appropriate level of physical security and impact resistance.

ATG Access ([www.atgaccess.com](http://www.atgaccess.com)) the world leader in high security and anti terrorist bollard systems have successfully engineered a shallow mount system that provides a solution to these types of installations.

At only 112mm deep the system has been tested and certified (PAS 68) up to 7.5 tonne at 80kph. Each bollard is mounted on a steel biscuit that interlocks with its neighbour. The ATG technology also caters for 45 and 90° changes in direction. It is also quick, easy and economical to install as well as reducing the disruption time required by up to three quarters.

Leda Security Products – ATG’s distributor in Australia is now able to provide this innovative and award winning bollard system to provide high level perimeter and vehicular access security.

## “An Unusual Request”



Leda’s Victorian office recently installed an Automatic retractable bollard near the Geelong Railway station for the Victorian Police Dept. and “V” Line.

It’s primary purpose is to allow easy access or exit to the rear of the police station and court house in the event of traffic congestion although it will also provide vehicular access for railway staff.

The bollard is pneumatically powered and monitored by CCTV with operational control available to both Geelong Police and “V” Line



## Glazed Overhead Doors

Leda has a new range of glazed panel lift doors. The aluminium frames can range up to 7 meters in width and 6 meters in height making them a unique offering in Australia. Glazed options include safety glass, acrylic and perspex depending on requirements. A full range of colours to match any aesthetic can be added.

Leda’s doors are spring loaded so can be easily manually operated or automated for less than \$1000. A full range of security and safety options is also available. The same range is available in insulated panels with optional windows and features the enhanced finger safety, making them safer than existing doors.

## “New Gate Handbook”

At over 100 pages Leda’s new “*Industrial Gate and Perimeter Security handbook*” continues to grow and expand as we include further technical information and additional new product drawings.

The handbook has been designed to provide specifiers and government departments with a comprehensive reference manual for inclusion in architectural libraries.

Often specifiers and clients don’t consider all of the relevant operational aspects when considering a gate installation so we have incorporated helpful checklists to prompt the necessary questions being asked and answered by the people that will be using the equipment.

Enormous interest in the new handbook has already been generated so register now to receive a free hard or electronic copy by emailing [pamela.b@ledasecurity.com.au](mailto:pamela.b@ledasecurity.com.au)





## Victory Motorcycles

Leda's Sydney installation team recently completed a high profile installation for **Victory Motorcycles** in Ashfield on their busy Parramatta Road outlet.

The newly installed black XP90R removable bollards were chosen for their ability to hide in the window sections of the display area so as not to detract from the motorcycles on display while still providing a high level physical protection for these expensive machines.

Strip footings in landscaped areas were installed to provide complete protection for the site. The installation was time critical for stock arrivals and opening day which Leda was able to comply with.

"Victory for Leda, a happy client and Leda for Victory".

## "Darling Walk"

The Darling Walk redevelopment in Sydney's Darling Harbour was recently completed by Bovis Lend Lease. An impressive range of technologies were incorporated into the design to achieve its 5 star green rating. One of the initiatives included bicycle parking facilities for 400 cyclists in the complex.

Leda staff assisted the architects and building designers achieve the optimum utilisation for areas allocated for bicycle parking. This required Leda manufacturing, supplying and installing both standard and specially designed racks to fit height restricted areas.



## N.T – Distributor Appointed

Leading security provider "**Security and Technology Services**" have been appointed as Leda's distributor in the Northern Territory. "S&TS" started operations only 5 years ago when joint managing directors Greg Ireland and George Rakkis using their combined security experience in the top end got together.

With operations in Darwin and Katherine S&TS has approximately 60 dedicated staff that have made them the go to security company in the Northern Territory. Providing project management, installation and ongoing service facilities the company is well placed to distribute Leda's growing range of security products in northern Australia.

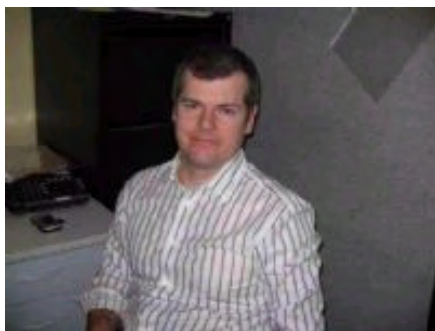


## Message from the CEO

As we roar into 2011, Leda is as busy as ever on a number of interesting projects from bike parking in Brisbane hospitals to high security vehicle access control on defence bases in Adelaide. Our Queensland team are installing a 20mtr wide quad lifting bifold door and the Victorian office a number of automated retractable bollards. There seems to be lots on.

Leda's four key business units are Bollards, Gates, Bicycle parking and Loading docks. Loading docks are our most recent addition to our product range and the automated technology greatly compliments our service business in gates. This has led us into an exciting range of glazed and panel lift doors as well as scissor lifts and freight hoists which will feature for Leda in 2011. I would urge any specifiers working on such projects to make contact and see what is new.

Another exciting development will be the release of our "Dockbrain software" for loading dock management in April at the "**Safety in Action**" show being held in Melbourne on April 6-8. It will allow large distribution centres to pre-book specific trucks to individual doors, control their access and track histories of sites, doors and trucks via the web. With RFID we can even see what fork loaded what truck so this is a huge development for the materials handling Industry in Australia.



Richard Matthews, CEO



[www.ledasecurity.com.au](http://www.ledasecurity.com.au)

Email [lvsales@ledasecurity.com.au](mailto:lvsales@ledasecurity.com.au)

Toll free 1300 780 450

**NSW**  
8/185 Briens Rd  
Northmead NSW 2152  
Phone (02) 8413 3410  
Fax (02) 8677 7199

**VIC**  
2/89 Enterprise Way  
Sunshine West VIC 3020  
Phone (03) 8399 8150  
Fax (03) 9315 1085

**QLD**  
2/387 Lytton Rd  
Morningside QLD 4170  
Phone (07) 3613 8270  
Fax (07) 3399 5688

**SA**  
1/5 Tooronga Ave  
Edwardstown SA 5039  
Phone (08) 8374 3266  
Fax (08) 8374 3299

