

End of Journey Facilities



More and more environmentally conscious people are using bicycles as an alternative means of transport. This has also led to a substantial increase in cyclists riding to workplaces and tertiary education institutions.



Employers, property owners and campus administrators need to be aware of the growing responsibility to provide cyclists with adequate end-of-journey facilities that should include some or all of the following:

- Clothes lockers
- Secure bicycle parking and storage
- Change rooms provision
- Showers
- Toilets
- Wash basins.

Many state governments have published recommended bicycle parking provision rates for various residential, commercial and public buildings.

In some states such as Queensland guidelines are now in place for the provision of change rooms, toilets and showers in areas where bicycle parking and security is provided. Applications include;

- Commercial workplaces
- Industrial complexes
- University and college campuses.

Encouraging people to cycle to work

Staff and employees that regularly cycle to work should be reasonably fit and healthy, and may prove;

- More productive
- To be absent from work less often with health issues.

There are also added benefits:

- Healthy staff provided with good facilities reduces staff turnover and consequential recruitment costs.
- Facilities are beneficial to all employees.
- Improves your corporate image.

End-of-Journey Facilities

End-of-journey facilities should provide cyclists with:

- Sufficient and adequate secure parking and storage facilities for their bicycles
- Adequate facilities for storing clothes and belongings, like back packs and panniers
- Change rooms, preferably with showers, toilets and wash basins.

The facilities should be easily accessible, if in a building, and really be located within 30 metres from the entrance of the building.



Typical Facilities Guidelines

(Queensland Development Code MP401 – Sustainable Buildings)

Table A

Bicycle Parking Spaces	User Group	Change Room Provision	Showers Required	Sanitary Compartments	Wash Basins
1-5	Female / Male unisex design	1	1	1 toilet	1
6-19	Female	1	1	1 toilet	1
	Male	1	1	1 toilet	1
20 +	Female	1	2 + 1 for every additional 20 bicycle parking spaces *	2 toilets + 1 sanitary compartment for every additional 60 bicycle parking spaces *	1 w+ 1 for every additional 60 bicycle parking spaces *
20 +	Male	1	2 + 1 for every additional 20 bicycle parking spaces *	1 urinal, 1 toilet + 1 sanitary compartment for every additional 60 bicycle parking spaces *	1 + 1 for every additional 60 bicycle parking spaces *

* Refer Table B for example of workings

Table B

	User Group	20-39 bicycle parking spaces	40-59 bicycle parking spaces	60-79 bicycle parking spaces	80-99 bicycle parking spaces	100-119 bicycle parking spaces
Showers required	Female	2	3	4	5	6
	Male	2	3	4	5	6
Sanitary compts required	Female	2	2	2	3	3
	Male	2	2	2	3	3
Wash basins required	Female	1	1	1	2	2
	Male	1	1	1	2	2

Introduction	1
Bicycle Facts	4
Design Guide	6
Installation	12
Consulting	13
Security Classes	14
Product Selection	15
PRODUCT RANGE	
Rails	17
Racks	31
Repair Stations	63
End-of-Journey	68
Cages	84
Lockers	88
Shelters	98
Scooters Racks	107
Other Products	112
Clothes Lockers	116
Signage	122
Standards	128
Packaging	129
Index	130

End-of-Journey Facilities

Leda have developed a number of standard cage designs that cater for both below and above ground applications, they can be modular or specifically designed to suit the building or project.

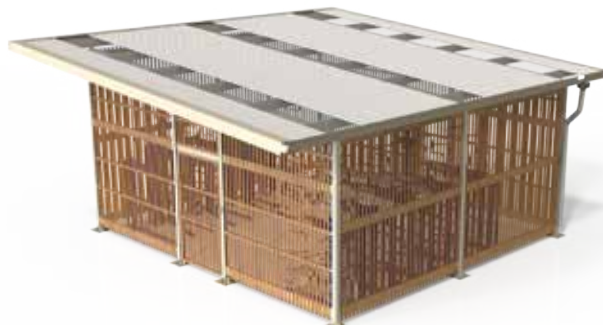
Our cages can be modified or changed to accommodate:

- Timber
- Steel mesh
- Stainless Steel wire cladding

Roof designs can be either:

- Flat, or
- Pitched

Optional guttering and downpipes can also be added.



Leda's experienced staff can assist with layout designs and product selection to ensure you optimise the number of cyclists that can be accommodated.

Polycarbonate roofing panel options:



DPI10mm Clear



DPI10mm Blue



DPI10mm Bronze



DPI10mm Green



DPI10mm Grey



DPI10mm Ice



DPI10mm Opal



DPI10mm Orange



DPI10mm
Dark Opal



DPI10mm
Reflective Grey



DPI10mm Yellow

End-Of-Journey Facilities

Product
Range

1300 780 450

UBC01 Module

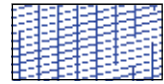
Metal cladding on roof
for above ground applications



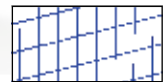
Pedestrian gate
with magnetic lock
and access control



Choice of mesh cladding



71 x 9 x 4mm security mesh
(higher anti-cutting protection)
INFILLSCMESH

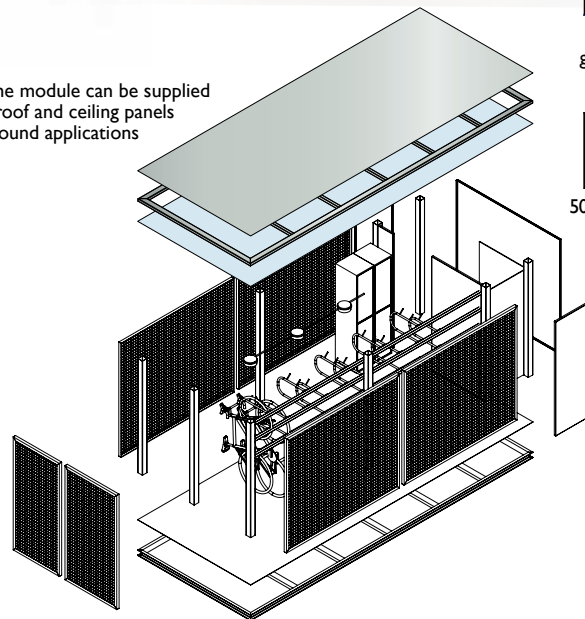


50 x 50 x 4mm
galvanised wire mesh
INFILLWMESH



50 x 10mm timber slats
INFILLTIM50

The module can be supplied
with roof and ceiling panels
for above ground applications



Retro-fit Installation

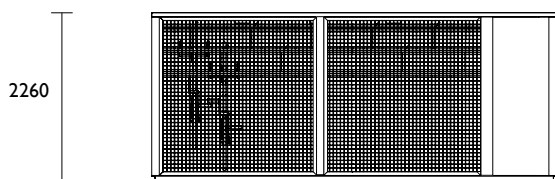
There is a growing need to build or 'retro-fit' secure bicycle parking areas and change rooms, showers and the like to existing buildings.

To avoid expensive building works, Securabike has designed a 'bike module' that can be used in both indoor and outdoor applications. The module is designed to fit into a single car space, and can be further expanded to occupy 2 or 3 car spaces.

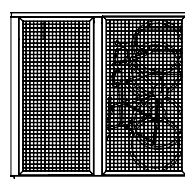
Modules are supplied in kit form and can be quickly assembled once on site.

A single car space can accommodate secure bicycle parking, change area, shower and clothes lockers for up to 10 cyclists. In outdoor installations modules can be fitted with green solar powered hot water systems and lighting.

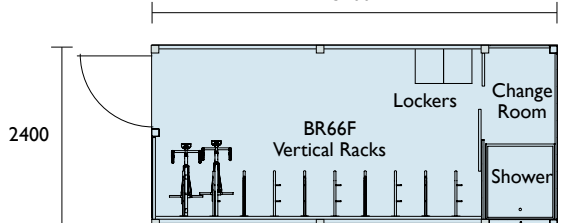
Side Elevation



Front Elevation



Plan View
5400



Converting 1 car space

PLEASE NOTE:

Rack selection and AS2890 compliance could reduce the quantity of bicycles to be parked within the cage. Please consult our sales team for free layout drawings and advice.

Material Specifications (General)

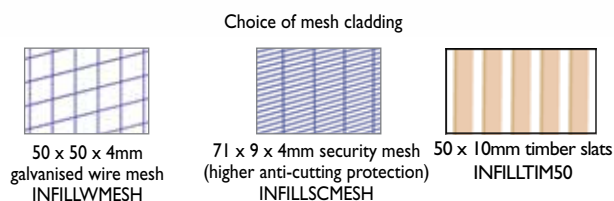
Structure 100 x 100 / 100 x 50 steel sections / galvanised / powder coated in a range of colours
Cladding 50 x 50 x 4mm / 71 x 9 x 4mm steel mesh / metal cladding / galvanised / powder coated in a range of colours



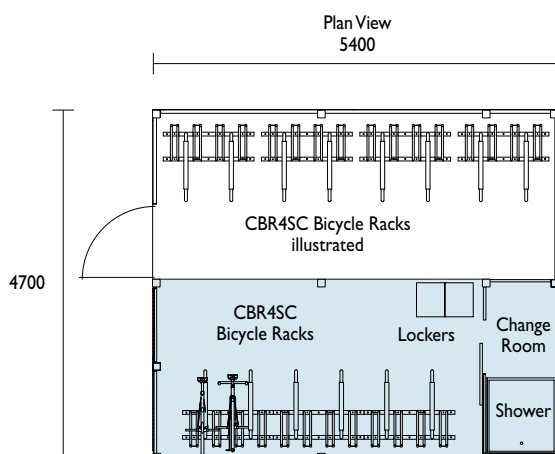
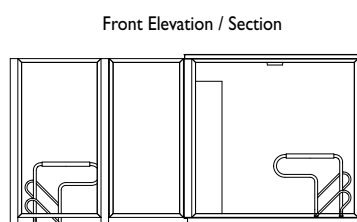
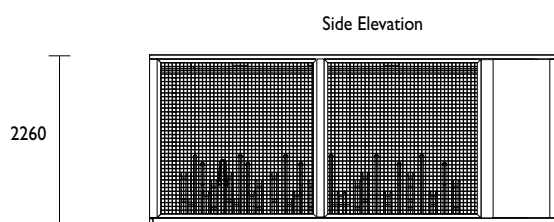
UBC02



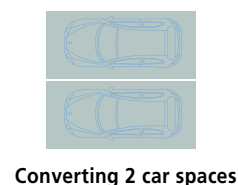
PLEASE NOTE:
Rack selection and AS2890 compliance could reduce the quantity of bicycles to be parked within the cage. Please consult our sales team for free layout drawings and advice.



In underground installations, modules can be easily connected to mains power and water / drainage services and can be expanded to 2, 3 or more car spaces providing secure cages catering for a larger number of cyclists.
The Securabike modular design allows for the complete package to be delivered to the site in kit form and easily assembled thus avoiding the need for major building work.



UBC01 Module
(Covered Top)



Material Specifications (General)

Structure 100 x 100 / 100 x 50 steel sections / Galvanised / Powder coated in a range of colours
Cladding 50 x 50 x 4mm / 71 x 9 x 4mm steel mesh / Metal cladding / Galvanised / Powder coated in a range of colours



End-Of-Journey Facilities

Product
Range

1300 780 450

UBC03

Pedestrian gate
with magnetic lock
and access control

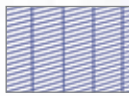
Metal cladding on roof
for above ground applications



Choice of mesh cladding



50 x 50 x 4mm
galvanised wire mesh
INFILLWMESH



71 x 9 x 4mm security mesh
(higher anti-cutting protection)
INFILLSCMESH



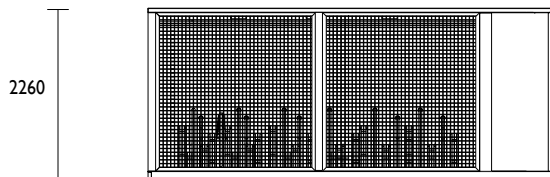
50 x 10mm timber slats
INFILLTIM50

Metal cladding
to shower area

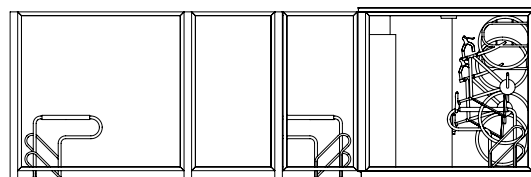
Either horizontal or vertical racks,
or a combination of both
can be used to store bicycles

PLEASE NOTE:
Rack selection and
AS2890 compliance
could reduce the
quantity of bicycles to
be parked within the
cage. Please consult
our sales team for
free layout drawings
and advice.

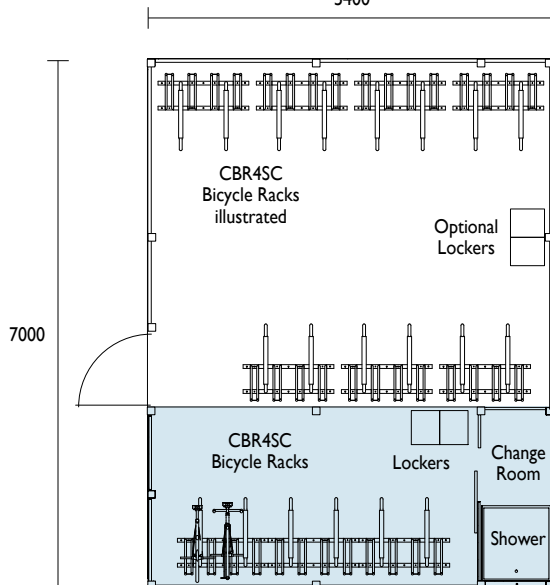
Side Elevation



Front Elevation / Section

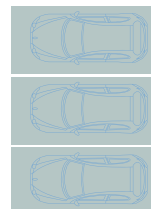


Plan View
5400



Modular wire mesh panels used
to expand to 2 car spaces

UBC01 Module
(Covered Top)



Converting 3 car spaces

Material Specifications (General)

Structure 100 x 100 / 100 x 50 steel sections / Galvanised / Powder coated in a range of colours
Cladding 50 x 50 x 4mm / 71 x 9 x 4mm steel mesh / Metal cladding / Galvanised / Powder coated in a range of colours



MVBC01

Vertical Single

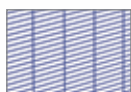
Designed for vertical bicycle storage



PLEASE NOTE:
Rack selection and AS2890 compliance could reduce the quantity of bicycles to be parked within the cage. Please consult our sales team for free layout drawings and advice.



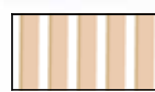
50 x 50 x 4mm
galvanised wire mesh
INFILLVMESH



71 x 9 x 4mm security mesh
(higher anti-cutting protection)
INFILLSCMESH



Redfern
INFILLRED65

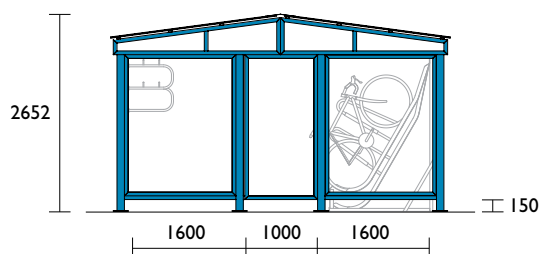


50 x 10mm timber slats
INFILLTIM50

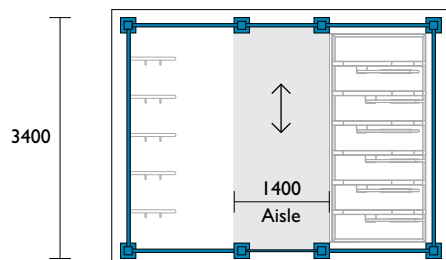
Choice of mesh cladding

Modular mesh panels (1500mm wide)
allow the length of the cage be expanded
to provide the required bicycle capacity

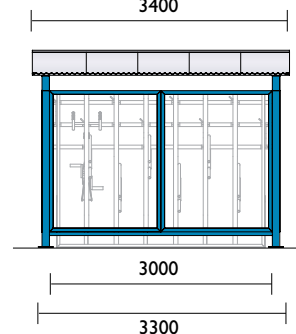
Front Elevation / Section



Plan View
4500



End Elevation / Section
3400



Product code	Length	No of Bicycles
MVBC01	3300	13
MVBC02	4900	21
MVBC03	6400	29
MVBC04	8000	37
MVBC05	9520	45
MVBC06	11100	53

Cage length expanded using
modular mesh panels (1500mm wide)

Material Specifications (General)

Structure 100 x 100 / 100 x 50 steel sections / Galvanised / Powder coated in a range of colours
Cladding 50 x 50 x 4mm / 71 x 9 x 4mm steel mesh / Metal cladding / Galvanised / Powder coated in a range of colours



MHBC01

Horizontal Single

Designed for horizontal bicycle storage

Metal cladding on roof

CBR4SC & CBR6SC Racks illustrated

Pedestrian gate with magnetic lock and access control

Modular mesh panels (1500mm wide) allow the length of the cage to be expanded to provide the required bicycle capacity

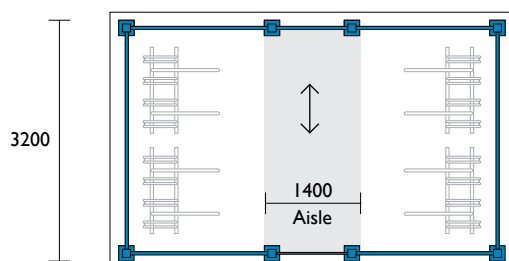
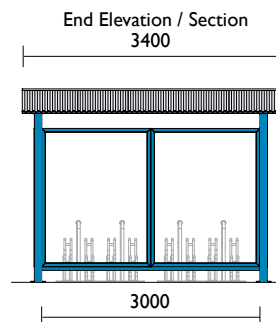
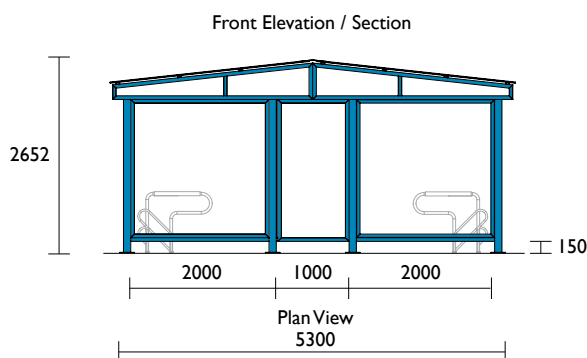
PLEASE NOTE:
Rack selection and AS2890 compliance could reduce the quantity of bicycles to be parked within the cage. Please consult our sales team for free layout drawings and advice.

50 x 50 x 4mm galvanised wire mesh
INFILLWMESH

Choice of mesh cladding
71 x 9 x 4mm security mesh (higher anti-cutting protection)
INFILLSCMESH

Redfern
INFILLRED65

50 x 10mm timber slats
INFILLTIM50



Product code	Length	No of Bicycles
MHBC01	3200	16
MHBC02	4800	28
MHBC03	6300	36
MHBC04	7900	48
MHBC05	9400	56
MHBC06	11000	68

Cage length expanded using modular mesh panels (1500mm wide)

Material Specifications (General)

Structure 100 x 100 / 100 x 50 steel sections / Galvanised / Powder coated in a range of colours
Cladding 50 x 50 x 4mm / 71 x 9 x 4mm steel mesh / Metal cladding / Galvanised / Powder coated in a range of colours

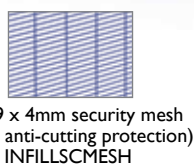
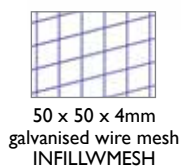


MHBC21

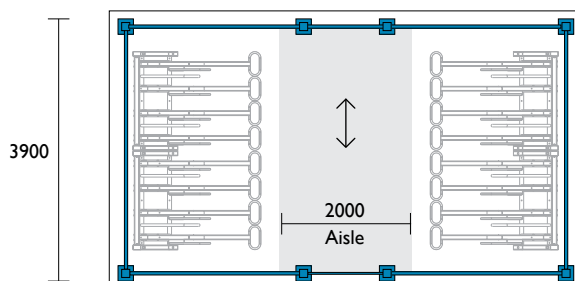
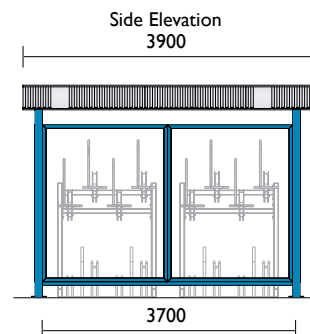
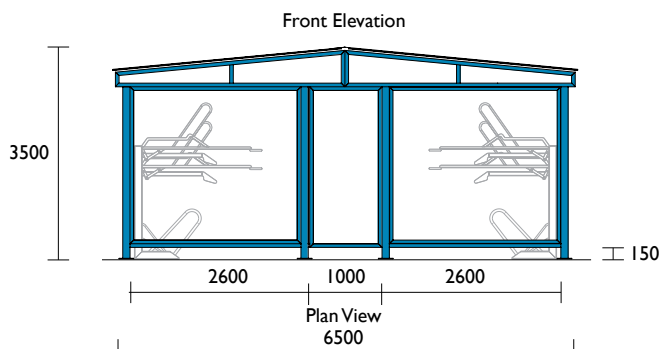
Horizontal Double

Designed for double horizontal
bicycle storage

PLEASE NOTE:
Rack selection and
AS2890 compliance
could reduce the
quantity of bicycles to
be parked within the
cage. Please consult
our sales team for
free layout drawings
and advice.



Modular mesh panels (1500mm wide)
allow the length of the cage to be expanded
to provide the required bicycle capacity



Product code	Length	No of Bicycles
MHBC21	3700	28
MHBC22	5300	40
MHBC23	6800	58
MHBC24	8400	68
MHBC25	9900	84
MHBC26	11500	96

Cage length expanded using
modular mesh panels (1500mm wide)

Material Specifications (General)

Structure 100 x 100 / 100 x 50 steel sections / Galvanised / Powder coated in a range of colours
Cladding 50 x 50 x 4mm / 71 x 9 x 4mm steel mesh / Metal cladding / Galvanised / Powder coated in a range of colours



End-of-Journey > Multiple Rack Cages

Product
Range

1300 780 450

MHBC68

Palm Cove Cage

The Securabike approach to designing bicycle cages and shelters is that they are:

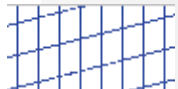
- Open and inviting
- Safe and secure
- Modern and attractive
- Easy to use

Various steel roof options
optional Polycarbonate panels

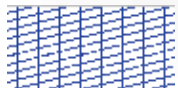
Choice of mesh cladding:



Stainless Steel Wires
INFILLSSW



50 x 50 x 4mm galvanised mesh
INFILLWMESH



71 x 9 x 4mm anti-climb mesh
INFILLSCMESH



Redfern
INFILLRED65

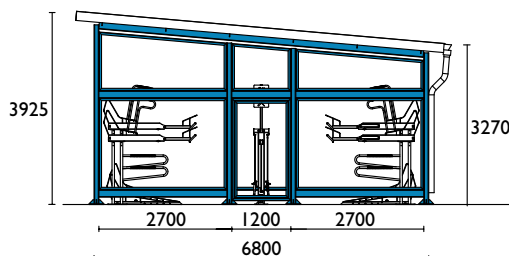


50 x 10mm timber slats
INFILLTIM50

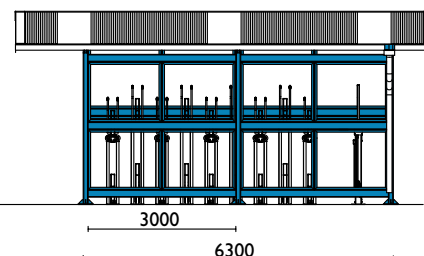


CBR2GS / BBR501
shown

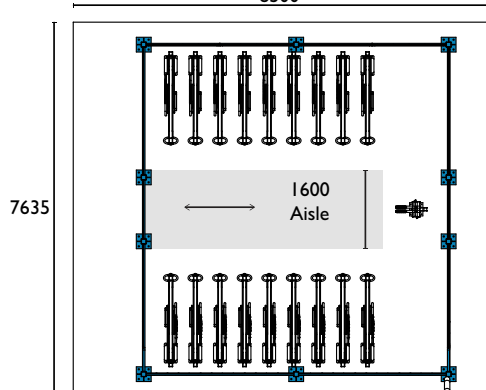
Front Elevation



Side Elevation



Plan View
8500



The Palm Cove is a modular design that can be expanded using 1500mm wide panels

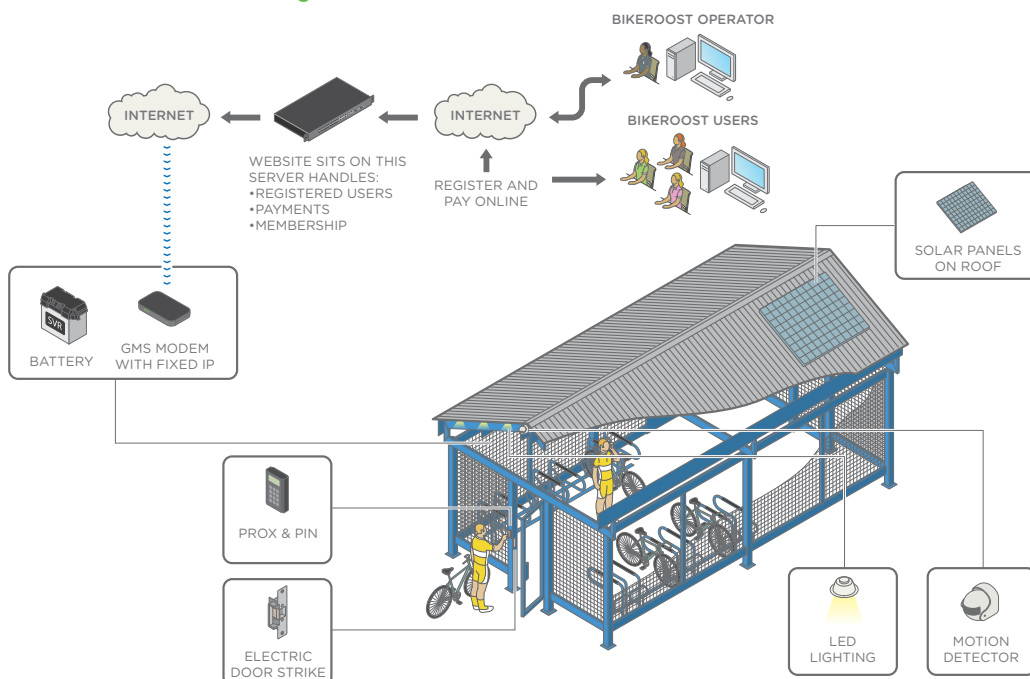
Product code	Length	No. of Bicycles	No. of Bicycles with BBR501
MHBC68	5500	20	12
MHBC69	7000	32	24
MHBC70	8500	44	36
MHBC71	10000	56	48
MHBC72	11500	68	60

Material Specifications (General)

Structure 100 x 100 x 5mm SHS / 150 x 50mm FIRMLOK® / 50 x 50 x 4mm steel angles
Cladding Various (See Above)
Finish Hot dipped galvanised / Powder coated in a range of colours



End-of-Journey Facilities



You can now manage access and subscriptions to your end-of-journey facility online with the new **Bikeroost** management system.

Securabike doesn't just supply the hardware. We have also developed software and operating systems that can be tailored to each EOJ facility. One easy website allows users to login, pay or manage their access to a bicycle shelter or cage.

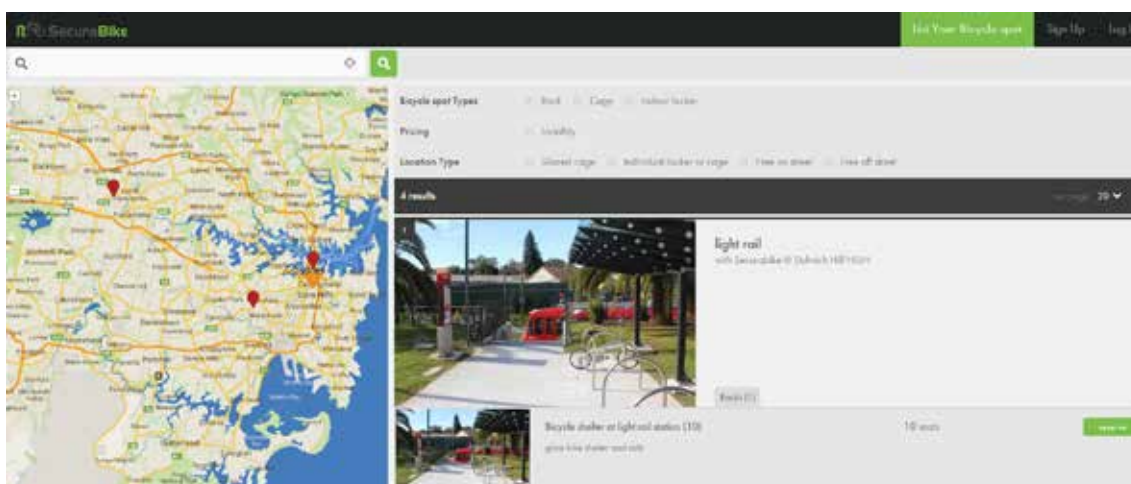
As an administrator you can control access and even billing! Not all bike facilities charge for access so if you just want an easy online management tool for your apartment block or office then this is the tool you should consider.

The Bikeroost system is smart with very little equipment needed at site. The over IP door controller needs to be connected to the internet by LAN or WAN and communicates directly with your account on the Bikeroost server which you

manage online from anywhere. You can control all your users' access at any time and communicate with one or all at the drop of a hat. Save time and hassle by putting your bike cage management online.

While the system is ideal for use with Securabike's cages and end-of-journey facilities, you can connect to existing or underground sites just as easily – you just require a door with an electric strike and internet connection to make it work.

Other options include solar power operation, lighting, automated doors and much more. Contact your closest Securabike sales office today for more information.



FBC24

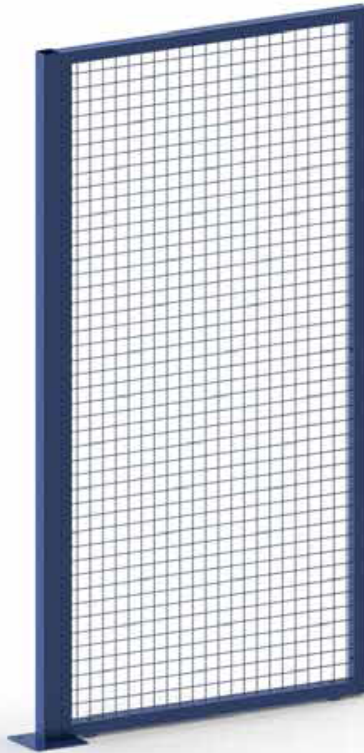
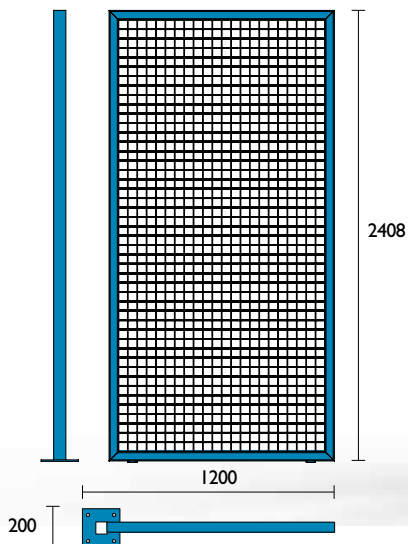
Cage Fence

This modular fence system allows for customisation of your bicycle enclosure. The panels bolt together in a frame making installation easy. Used in underground car parks or where no roof is required.

Each 1200mm section includes 1 post and 1 mesh section. The mesh sections can also be joined to enable a post every 2400mm which can reduce costs further.

50x50x4000
galvanised wire mesh insert

50x10 timber slats



Material Specifications (General)

50 x 50 x 4mm / 71 x 9 x 4mm steel mesh / Metal cladding / Galvanised / Powder coated in a range of colours





Access Control and Electronic Locking Systems

Using technology developed in our other operating divisions, Securabike can design and incorporate a variety of pedestrian access control methods using either manual or electronic systems.

In addition to providing added security for the cyclist, access control systems are also designed to:

- Effectively and economically operate the system
- Minimise the administration time in managing the facility
- Foster greater cage utilisation and bicycle use
- Guarantee a friendlier user system
- Offer potential revenue to recover capital costs.



Pedestrian Swing Gates for Multiple Rack Cages

Securabike's pedestrian swing gates are designed to provide a 1 metre opening, and are available in 1.8m, 2.1m or 2.4m heights.

The gates are available in different finishes and with a number of infill options. Hinging can be left or right handed, and there are also options on locking mechanisms and automatic closers.

Security
PSWS

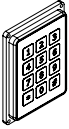
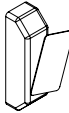
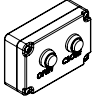

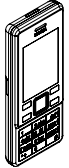
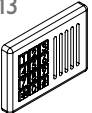
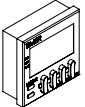


Premier
FPSS01

Industrial
RPGS



Premier
RPSS

System Options include:	
PRODUCT CODE	Details
PIN 	PIN code entry numerical pad.
PROX 	Programmable proximity cards. (Contactless access control)
PB 	Push button controller.
KS 	Key switch controller. Sprung or hold to operate options.
GSM1 	GSM gate kit allows authorised users to call the gate to open or close it. There is no charge to the caller and owners supply a basic SIM card to be used in the kit. The Basic system allows for the control of authorised users without an audit function.
GSM3 	As GSM1 with addition of a wireless intercom.
GATETIMER 	Additional time settings for operations before or after an event. Eg. 'open every morning at 6am'

Door Hardware:	
PRODUCT CODE	Details
240-33 	Door handle
7303 	Door closer
NI01-25 	Mortice lock
CLAU#.MS.SPLC 	Mortice lock with ID card reader. With lever and cards
E5070-626-SAC 	Push button locks Pin code entry and free to exit
SS087 	Strike Shield Stainless steel
ED22NLCDSIL 	Free to exit latch
KML-2 	Electromagnetic lock Holding force 270kgs
KES200Z 	Electric strike
DSS84 	Door stopper Four point wall fixing
KH31 RHSSS 	Self closing hinge KH31 RHSSS self closing hinges right hand door KHS31 LHSSS self closing hinges left hand door

Premier

FPSS01

Fabrication

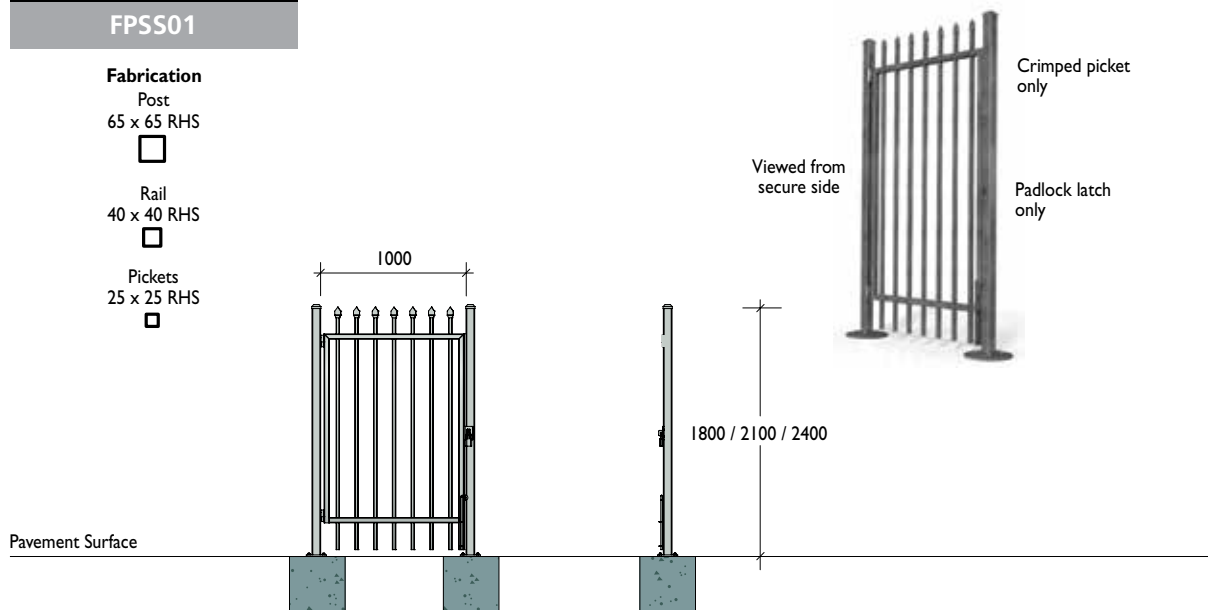
Post
65 x 65 RHS



Rail
40 x 40 RHS



Pickets
25 x 25 RHS



Industrial

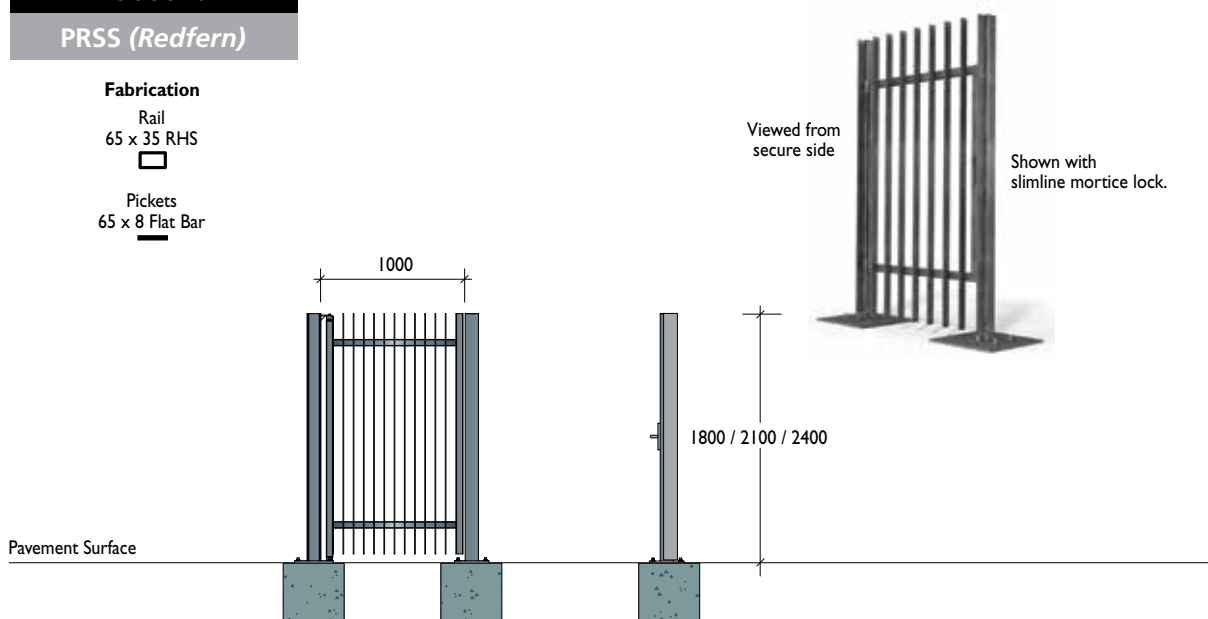
PRSS (Redfern)

Fabrication

Rail
65 x 35 RHS



Pickets
65 x 8 Flat Bar



Duty Level	Code	Width	Height Range	Infill Range •	Top Extension •	Post Fixing
Premier	FPSS01 suits Premier fencing	1.0m only	1.8m / 2.1m / 2.4m	RHS Pickets only	TC	Fixed or Baseplate
Industrial	PRSS (Redfern) suits Redfern fencing	1.0m only	1.8m / 2.1m / 2.4m	Flat Bar	N/a	Baseplate
	RPGS (RAAF)	1.25m only	2.125m	Full Range	Full Range on o/head rail	Baseplate
Security	PSWS no o/head rail	1.0m only	1.8m-2.7m 0.3m increments	Full Range	Full Range	Fixed or Baseplate
	PSWSC with o/head rail	1.0m only	2.1m-2.7m 0.3m increments	Full Range	Full Range on o/head rail	Fixed or Baseplate

Industrial

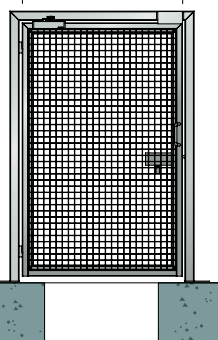
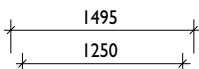
RPGS

Fabrication

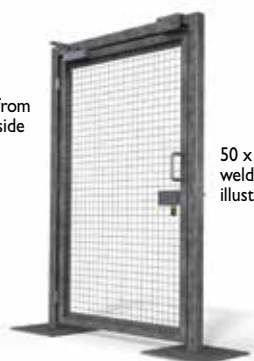
Frame
75 x 75 RHS



Frame
50 x 50 RHS



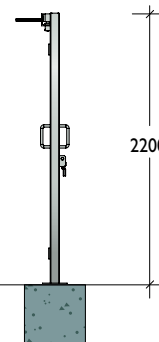
Viewed from
secure side



50 x 50 x 4
welded mesh
illustrated

Optional Disabled Access Kit

- Low energy (DDA compliant) 240V / 2.5A
- Complies with emergency exit requirements
- Controlled via a PLC
- Programmable to work with access control systems
- Other options include UPS function, electric locking and safety sensor.



Pavement Surface

Security

PSWS / PSWSC

Fabrication

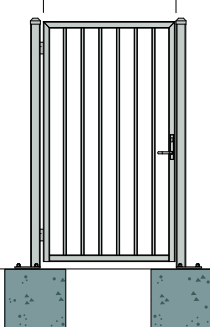
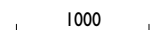
Post / O/head Rail
75 x 75 RHS



Frame
50 x 50 RHS

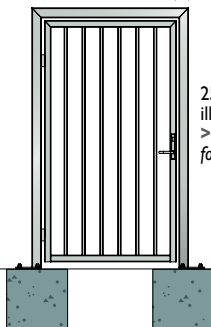
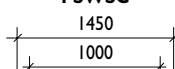


PSWS

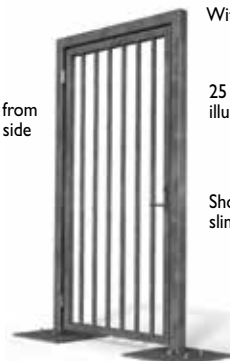


With overhead rail

PSWSC



Viewed from
secure side



With overhead rail

25 x 25 RHS pickets
illustrated

Shown with
slimline mortice lock.

25 x 25 RHS pickets
illustrated
> Refer to p76
for infill options

1800 / 2100 / 2400

Pavement Surface

Lock Options					Auto Closer	Finish		
Padlock	Drop Bolt	Mortice	Magnetic	Electric		Hot Dip Gal	Powdercoat	Wet Spray
Standard	Standard	N/a	N/a	N/a	N/a	Incl	Incl	Opt
N/a	N/a	Optional	Optional	Optional	Optional	Incl	N/a	Opt
Optional	Optional	Optional	Optional	Optional	Optional	Incl	N/a	Opt
Optional	Optional	Optional	Optional	Optional	N/a	Incl	Incl	Opt
Optional	Optional	Optional	Optional	Optional	Optional	Incl	Incl	Opt