

Newsletter No.39



Hi-Speed Bifold
Gates for Victorian
Court House

Shallow Mount
Concrete Footing
Designs for High
Security Products



Portable Bike
Racks for
"Shimano"
Singapore

CONTENTS

LEDA SECURITY PRODUCTS



» p.5

5 Bicycle Parking

CBR4SC Wall Mounts, New Securabike Website, Transportable Racks for Shimano Singapore, VIVO Cafe Custom Bike Racks, Additional Lockers for Campbelltown Station, End of Journey Facilities,

8 Bollards

Major Bollards, Brisbane Airport, Flexible Bollards, Extra Heavy Bollards, Stainless Steel Retractable Bollards



» p.8

10 Gates

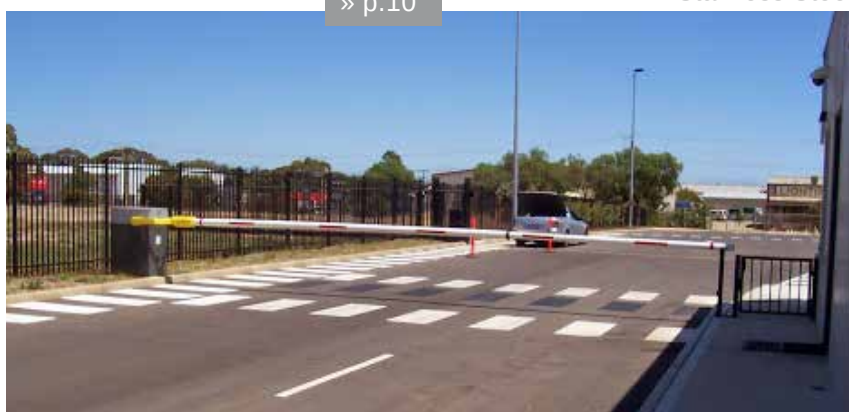
Hi-Speed Bifold Gates, Boom Gates, Canada Bay Sliding Boom Gate, One Steel Newcastle, BOC Gates

12 Docks and Doors

Designing Electronical and Mechanical Safeguards, Hydroswing Doors

12 Technical Information

Stainless Steel Protection



» p.10



» p.12



Revamped Product Brochure

We have recently revamped our product overview brochure with updates that reflect the changes that have occurred to our Leda extensive product range



SHALLOW MOUNT

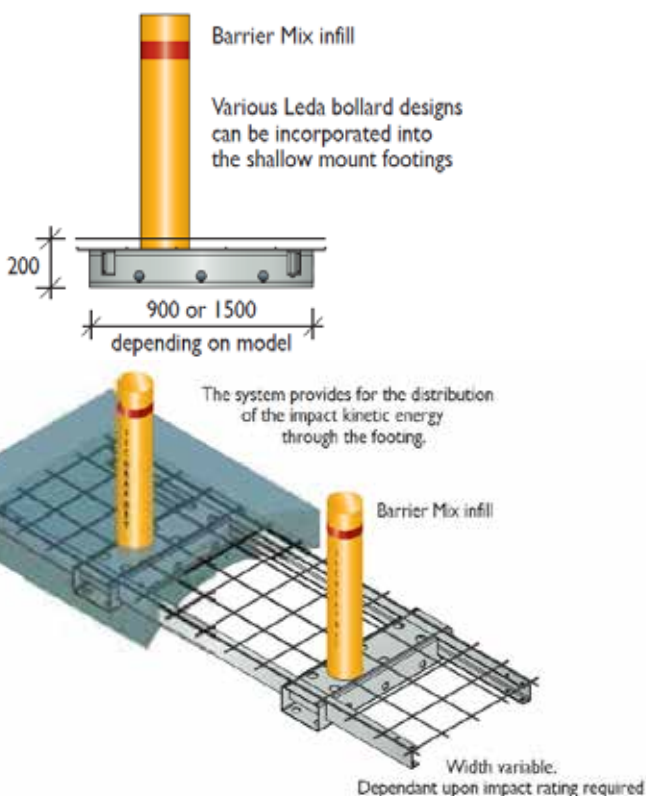
Installing “high ‘physical security’ products” into existing high profile sites in Australia has involved Leda’s engineers developing a number of shallow mount footing options for our high security products.

In most instances the cost of moving or re-routing existing services to install physical security products can be prohibitive. Leda’s fully tested “shallow mount” technology makes the project viable”.

On this project depicted below Leda staff are installing two hydraulically operated “shallow mount road blockers”. These PAS68 certified road blockers only require a 500mm deep footing to absorb the kinetic energy forces they might sustain in a hostile impact.



Typical Section



A footing depth of only 200mm is required with this Leda design for high impact fixed bollards



PHYSICAL SECURITY



1. Setting up

Leda's NSW team recently completed a large installation of retractable high security bollards at a high profile Sydney site.

This particular project required six PAS68 certified SPTT bollards which were installed in a single line trench footing. These telescopic bollards are hydraulically operated and require a much shallower footing the conventional retractable bollards resulting in less interference to existing services.

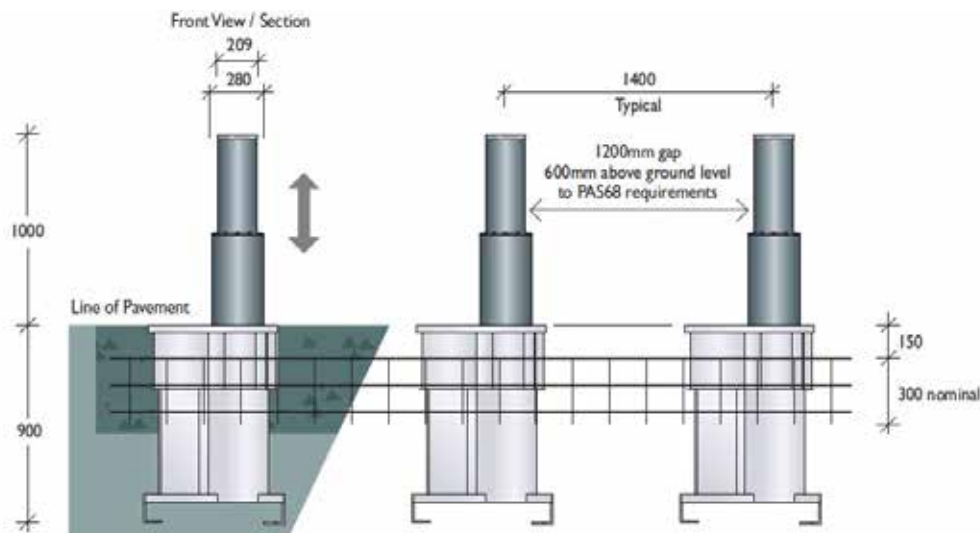
At the same time civil and installation costs are dramatically reduced due to the much smaller concrete footings required.



3. After Concreting



2. Adding Steel Reinforcement



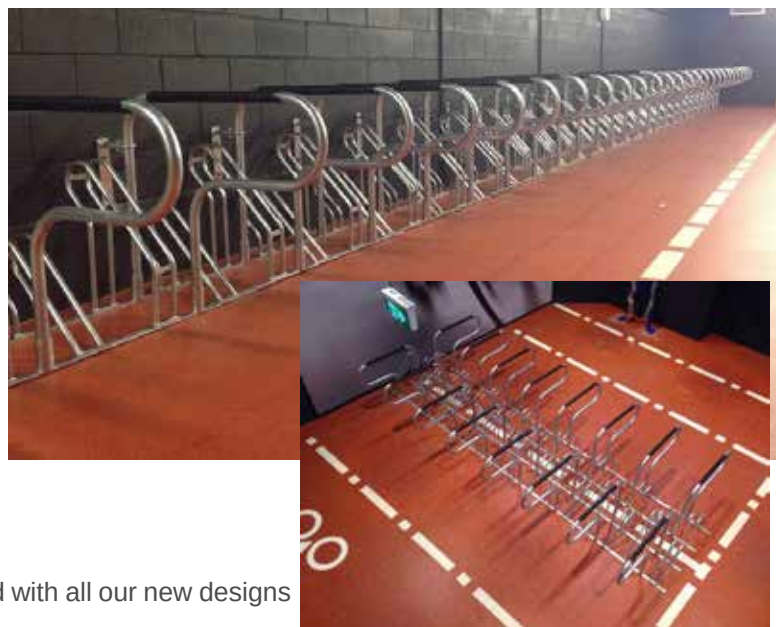
BIKE RACKS

CBR4SC Wall Mounts

Leda Sydney recently supplied and installed 39 CBR4SC bike racks and a bike repair station at a Sydney CBD site for Built Construction.

As the owners did not wish to interfere with the textured floor surface it was necessary to modify the racks so that 30 of the racks were fixed to the wall.

Supplied in hot dipped gal finish the racks are designed to provide security for up to 140 cyclists.



New "Securabike" Website

Our 'Securabike' website has just been revamped and updated with all our new designs and products.

Visitors to our www.securabike.com.au will be familiar with the new facelift to the website in January. The product menus have been revised to make selecting from the large range much easier and use less clicks. Additionally, the product pages are having DWG, Revit and positioning information PDF's for architects and specifiers loaded. This will enable specifiers to speedily add bicycle parking to projects in the most convenient format. Our revised and updated "bicycle parking handbook" in 2015 will be uploaded to the site as soon as it is released.



Bicycle Repair Station



Bike Cages



Bike Lockers



Bike Rack Hire



Bike Racks



Bike Racks for Home



Bike Rails



Bike Shelters



Bike Signage



Clothes Lockers



Other Products



Scooters and Skateboards

BIKE RACKS

Transportable Racks for Shimano Singapore

While most bike racks are permanently fixed these CBR bike racks with expandable width spacings have been fitted with wheel coasters to make them transportable.

The racks were manufactured and supplied from Leda's Ningbo plant to this "Shimano" showroom in Singapore.



VIVO Cafe Custom Bike Racks

A local Brisbane based coffee company, VIVO has been keen to attract cyclists to their local cafe and are using a "Securabike cafe rack" to do so. Having a custom branded rack is a great way for attracting cyclists to a location.

Leda's Cafe Racks are wheel mounted so that they can be conveniently positioned for cyclists use in secure and convenient locations. When the facility is closed, they can be simply wheeled away and stored.



Additional Bicycle Lockers for Campbelltown Station

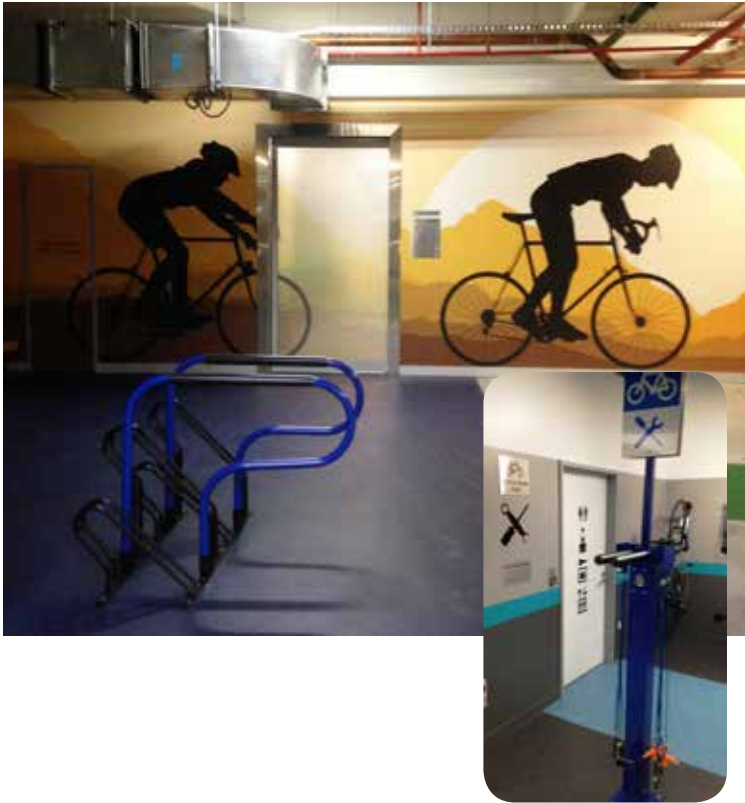
For over 10 years Leda's Sydney office has been assisting Transport NSW maintain over a thousand bike lockers across the metropolitan rail system. Located at most railway stations the lockers are available for permanent hire to cyclists.

Meeting changing demand requirements on the lockers often requires moving lockers between various stations and when it does finding convenient locations can prove difficult.

At this site at Campbelltown Railway Station Leda's staff were able to add a further 6 vertical storage bike lockers by concreting an overgrown and unsightly scrub setting.



END OF JOURNEY FACILITIES



Leda WA have recently completed a state of the art "end of journey" bicycle parking facility in the heart of Perth's business district.

CDI Group were awarded the tender for the office fit out and EOJF upgrade for the AMP Tower, in St George Tce, Perth.

Leda assisted in the design specification in the early phases of this project, and later supplied and installed a mixture of vertical and horizontal bicycle racks to maximise capacity of the space available in the basement of the office tower.

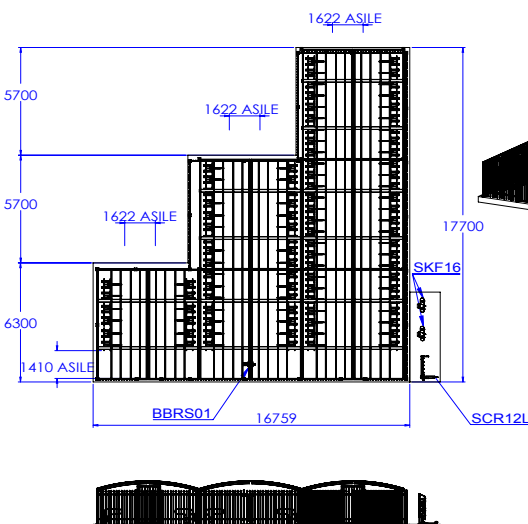
Leda also provided a multi tool bicycle repair station and chain rail to add to the EOJF.



End of Journey Bicycle Shelter

Leda WA have designed a 200+ student end of journey facility which includes IP networked security cameras for facial recognition.

The dual door access control system Leda has used on this design integrates with the student school library card and the Perth Transit Train and Bus ticket, enabling the student to use the single card for all.



There are also racks for scooters and skateboards in the facility.



BOLLARDS

Major Bollards

The clean sharp lines of Leda's triangular "Major" bollards stand out at a recent installation by Leda's Victorian branch at St Kilda Road Melbourne.

Reinforced with our internal extra heavy duty pipe section the "major" bollards combine both aesthetic's and impact resistance. They are also designed to be installed into existing pavements by concrete core drilling.

As with most Leda bollard designs they are available in both "fixed" and "locking and removable" models.



Flexible Bollards

Leda's Northmead sales office had an unusual request to install a disabled parking sign on our IBS100F flexible bollards.

With a hinged base the bollards are much less likely to sustain accidental damage.

Brisbane Airport

Leda's Queensland office recently supplied and installed a large number of "Securapost" fixed bollards for this car park at the "Direct Factory Outlets" located at Brisbane Airport.

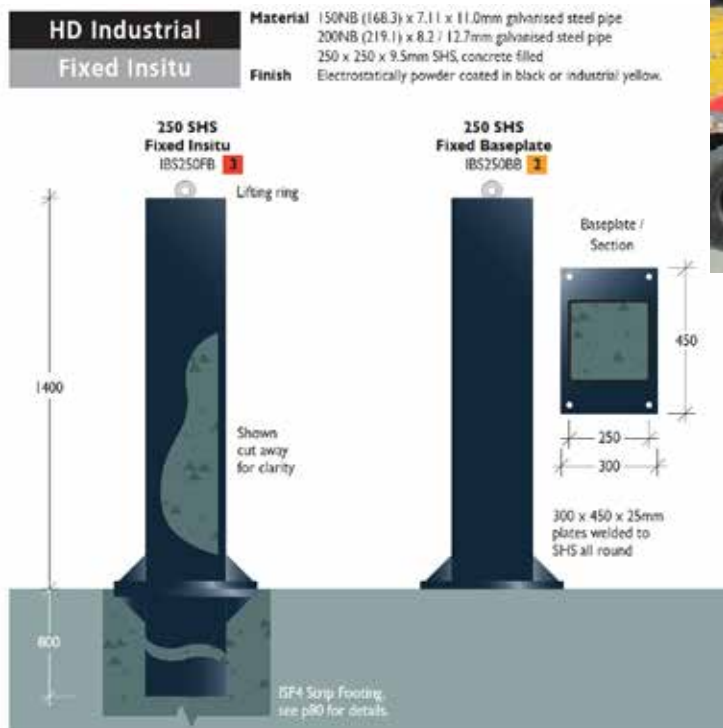
The Securapost bollards delineate the pedestrian thoroughfare and to stop vehicles encroaching on the walkway.



BOLLARDS

Extra Heavy Bollards

The Australian Army's vehicle fleet contains some very large and heavy vehicles. So when it comes to providing protection against accidental damage against accidental damage to infrastructure at defence sites the protective bollards and barriers need to be very strong.



Leda's IBS250FB industrial bollards were specified and have been used extensively on a number of army base upgrades.

This particular design is manufactured in two sections of heavy SHS which bolt together on site. There is a 900mm deep base section that is permanently installed in a substantial concrete footing to which the 1400mm high bollard section is connected. The bollard sections impact resistance is improved by the addition of a special barrier mix at Leda's Tuggerah plant before despatch.

Stainless Steel Retractable Bollards

Illegal parking in cities across Australia poses problems for many property owners.

In this instance a church forecourt in Brisbane's CBD was having ongoing issues with unauthorised motorists and while they needed to prevent cars parking illegally, they still required vehicle access for church services.

The problem was solved with the installation of 4 manual retractable bollards. These stainless steel units are key operated and can be quickly raised or lowered by church staff when required.



GATES

Hi-Speed Bifold Gates

Leda's Victorian team partnered with a major builder to design, manufacture and install a double set of bifold gates for Bendigo Law Courts.

Designing and manufacturing these “[trackless](#)” and “[wide width](#)” gates was no easy feat for Leda's engineers. The two sets of gates also had to operate so that they created a “[sally port](#)” during prisoner drop off. The gates and surrounding fencing also had to blend in with the heritage look of the building which is located in the city area.



Large Boom Gates

Boom gates don't get much bigger than this 10 metre unit recently installed for Liebherr in Edwardstown South Australia.

Leda recently completed manufacturing and installing vehicle access control at three of Liebherr's sites in Australia.



GATES

Canada Bay Sliding Boom Gate

One of Leda's unique "sliding boom gate" designs was installed at "Bayview Park" in Sydney for Canada Bay Council earlier this month.

The sliding boom gate provides much higher security than conventional boom gates and was installed to provide improved access control to the boat ramp and park after hours.

Leda technicians programmed set opening and closing times for the gates operating procedures, with the flexibility of authorised proximity card users being able to access the park if required after hours.



One Steel Newcastle

Leda's Engineering staff were contracted to design a unique safety gate system that when activated could shut off access to a large area when One Steel's "Scrap Wire Bundler" is operating.

To secure the area Leda manufactured and installed two parallel Cantilever gates, one 10.0mt long and the other 5.0mt.



Both cantilever gates are also fitted with 3.0mt swing gates that once swung through 90 degrees lock off the area.

The real challenge for Leda's engineers was fitting the swing gates on the end of the cantilever gates and then overcoming the deflection so that the swing gates met together.

GATES



Vehicle Access Control

Leda Security has partnered with “Secure Monitoring” to install eight boom gates to control vehicle access at BOC’s head office.

Two x 4.0m boom gates were installed at the main reception and visitor car park. A further six were installed internally to three different entrances to a multi level car park to control vehicle parking numbers. All three driveways have two boom gates with articulated arms one for entry and one for exit.

Secure Monitoring then installed a smart access control system. Each level has its own parking numbers, so the cars are counted in and out.

A car pulls up at a set of traffic lights (supplied by Leda). If the light is green it means there is available spots, the car pulls over the activation loop, the loop activates an RFID reader, the reader searches for a valid ticket on the car, if it finds the valid ticket it activates the boom to open. If the light is red and the car drives over the activation loop it will not work and the RFID can not activate.

Leda would like to thank Alan Myall General Manager of Secure Monitoring for this opportunity.

DOCKS AND DOORS

Designing Electronical and Mechanical Safeguards

Leda’s Tuggerah team were recently contracted to design manufacture & install a 3.0 x 2.0mt scissor lift for the “Reject Shop” at Cessnock. The scissor lift has a 900mm high extension to allow safe handling of inwards/outwards product.

Being an existing building presented a few challenges with the retrofit. Concrete sawing the necessary opening then allowed excavation to take place.

Safety railings and access meeting SAA standards was also fitted once the scissor lift was installed.



HYDROSWING

Leda's hydroswing doors have created enormous interest from architects right across Australia and for good reason.

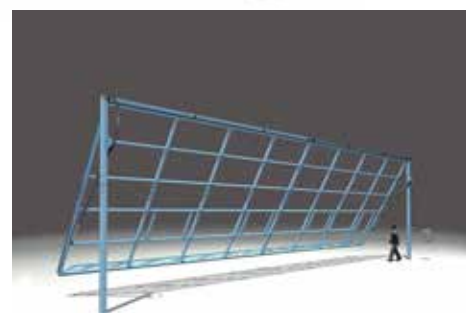
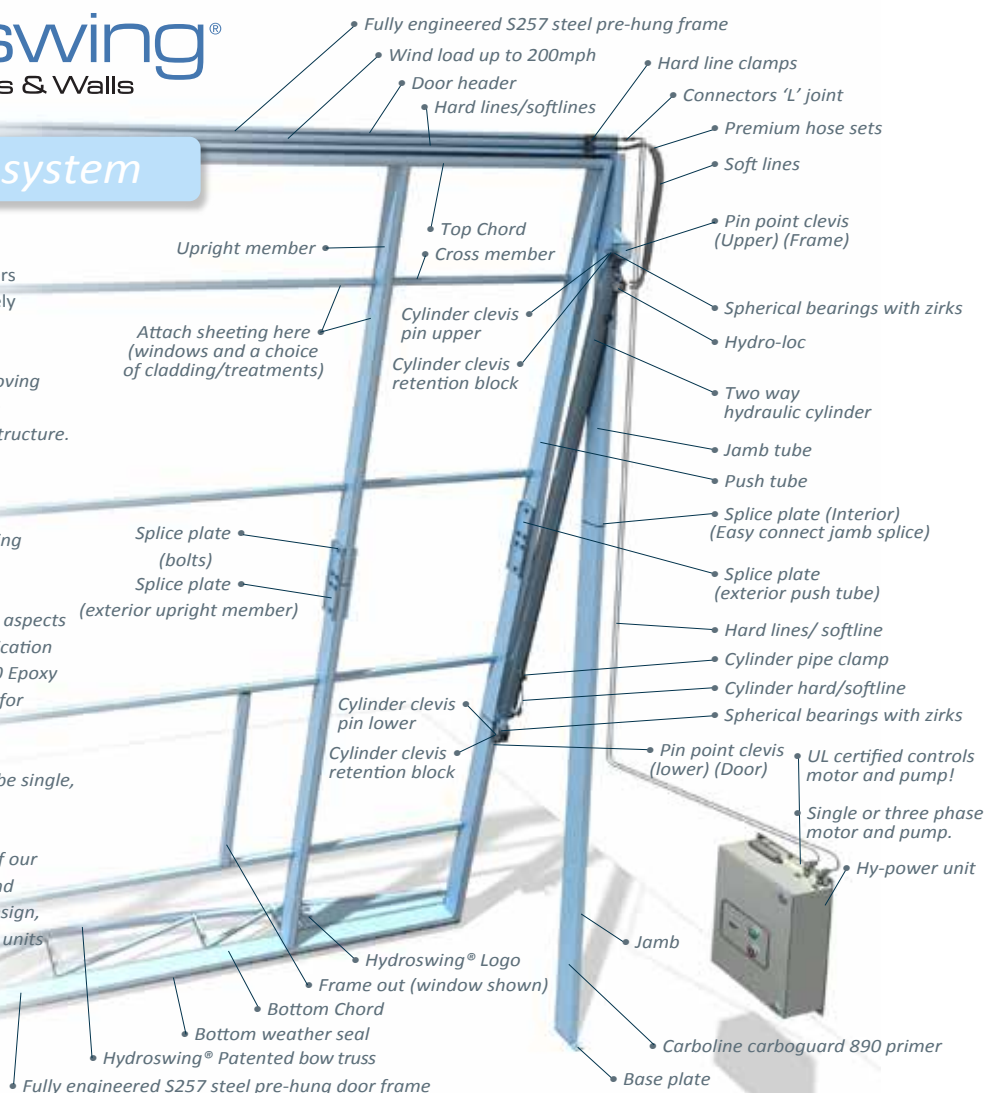
These hydraulically powered doors incorporate some advanced features.

HYDROswing® Hydraulic Doors & Walls

Single panel door system

This is a visual aid to assist communication between customers and us and our suppliers so as to enable us to talk together effectively about the door and its component parts.

- The Hydroswing® door system is a single moving panel which is pre hung by hinges in its own frame which then attaches to the building structure.
- Fabricated & welded to ISO 9001 and American Welding Society D1.1 standards with each door stringently audited for welding and quality assurance.
- The Hydroswing® is an industry leader in all aspects but especially in its finish with full post fabrication shot blast, with a Carboline Carboguard 890 Epoxy paint finish with certificate of conformance for integrity of the finish.
- Electrical controls are UL certified and can be single, three phase or even DC driven pumps.
- The Hydroswing® is the latest generation of our design incorporating the latest hydraulic and welded steel technology, unparalleled in design, strength and integrity, boasting over 7,000 units world wide.

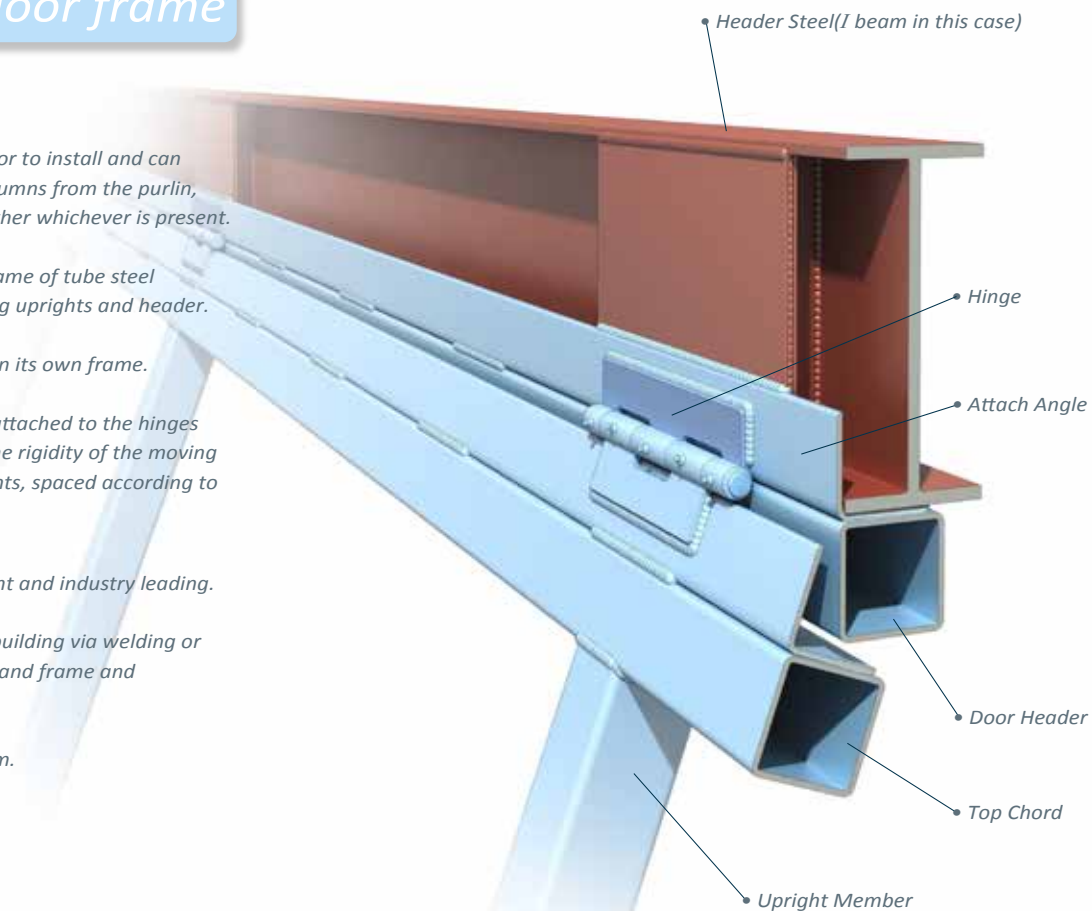


DOORS



Inside mounted door frame

- Header beam can be existing or added prior to install and can either be an I beam or drop down stub columns from the purlin, the Hydroswing® attach angle welds to either whichever is present.
- The Hydroswing® is pre hung in its own frame of tube steel with attach angles for attaching to building uprights and header.
- The Hydroswing® is pre hung and hinged in its own frame.
- The moving frame of the Hydroswing® is attached to the hinges via means of a sealing attach angle and the rigidity of the moving frame is internally created from the uprights, spaced according to load and wind requirements.
- Quality assurance for each door is stringent and industry leading.
- The Hydroswing® can be attached to the building via welding or bolting and can be attached to steel, post and frame and concrete/brick structures.
- * Hydroswing® Single panel hydraulic system.



• Hydroswing® Single panel hydraulic system.



TECHNICAL INFORMATION

Stainless Steel Protection

The addition of "Polymeric Resin Protection" to architectural metal finishes continues to be increasingly specified as Architects become aware of the benefits and reduced maintenance costs.

Leda has been offering this option for several years and recommending it particularly for sites likely to be subjected to hostile or corrosive conditions such as found in chemical plants or marine locations. The coating is a crystal clear polymeric resin blend that provides long term indoor & outdoor protection on metal. It is highly resistant to salt or chlorine corrosion. Formulated for use on non-painted metals: Copper, Brass, Bronze, Stainless Steel, Aluminum, and other non-painted or plated metals. It can also be used on painted metals to protect from salt corrosion or chlorines. The coating has an impermeable finish that provides outstanding protection against damage caused by corrosion,



These Stainless Steel Bollards at Adelaide airport have been protected with Leda's MC001



ultra violet rays, salt water, salt air, acid rain, pollution, mildew, bird droppings, bleach, etc. It also reduces maintenance and cleaning. Resists dirt, water, mildew and algae. Reduces fingerprints and smudges on Stainless steel. It will not chalk, crack, peel, yellow or discolour from exposure.

Providing protection for 3 to 5 years Leda can add the protective coating either at time of supply or as part of a preventative maintenance contract (PMC).

For further information please contact your closest Leda office.

MESSAGE FROM THE CEO

LEDA SECURITY PRODUCTS



As I look at business conditions around Australia we are fortunate to be a national company as we experience changing economic conditions in the various states. The heat has come out of Western Australian economy with the easing of the mining boom but then I look at our bicycle parking sales in WA and they are way over budget which is fantastic so see. I recall that the only Leda division to grow during the GFC was Securabike, proving that cycling in the future will continue to be an unstoppable force. In 2014 our China team exported bicycle parking to NZ, USA, UK, Canada, Columbia and Singapore.

In October 2014, Leda Australia went live with a new ERP system. Our main goal was to provide transparency to our customers as to their order status from the moment we receive each order, through to its installation. I am extremely happy to report to our customers that this exercise has been an overwhelming success with the quality and timeliness of information improving for all. Leda will be present at a number of exhibitions this year including the Avalon Aviation show in February 2015. This is mainly due to the growing interest from the aviation sector for our Hydroswing doors which are a fantastic innovation. Leda will also be present at both the "ASIAL" and "Security in Government" Security shows in the second half of the year. We will also be exhibiting our

"Securabike" products to an international market in June at Velocity in Nantes, France.

As this is our first newsletter for 2015, I would like to wish our staff, customers and specifiers a successful 2015 and I look forward to updating you with developments at Leda throughout the year.

Leda Security Products Pty Ltd

ABN 23 067 258 235

Head Office
Design, Engineering, Manufacturing and Accounts
18 Reliance Drive
Tuggerah NSW 2259
Phone (02) 8413 3430
Fax (02) 4353 2255

Sales Branches

NSW	VIC
8/185 Briens Road	2/89 Enterprise Way
Northmead NSW 2152	Sunshine West VIC 3020
Phone (02) 8413 3410	Phone (03) 8399 8150
Fax (02) 8677 7119	Fax (03) 9315 1085



QLD
2/387 Lytton Road
Morningside QLD 4170
Phone (07) 3613 8270
Fax (07) 3399 5688

SA
1/5 Tooronga Ave
Edwardstown SA 5039
Phone (08) 8374 3266
Fax (08) 8374 3299

WA
1/3 Finance Place
Malaga WA 6090
Phone (08) 6430 1670
Fax (08) 9209 2860

National Sales 1300 780 450

Email sales@ledasecurity.com.au

Website www.ledasecurity.com.au