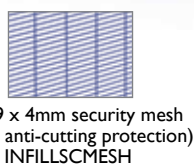
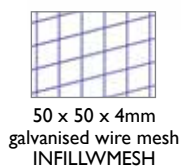


**MHBC21**

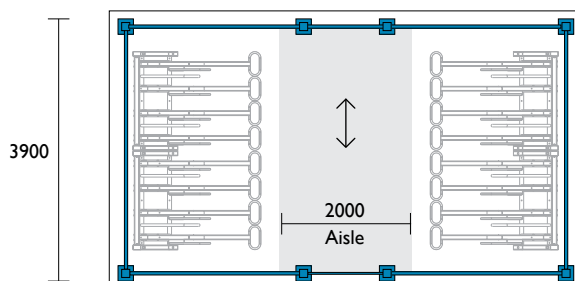
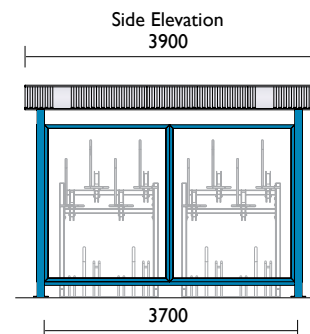
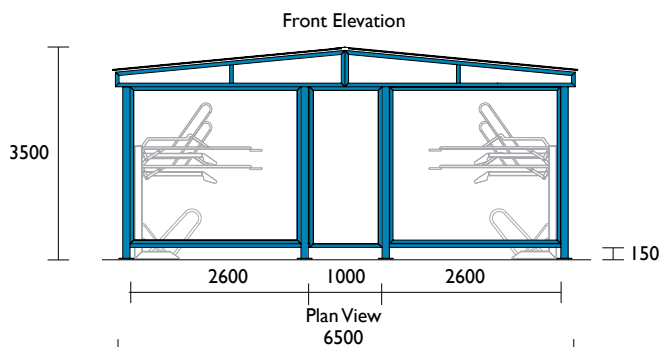
**Horizontal Double**

Designed for double horizontal  
bicycle storage

**PLEASE NOTE:**  
Rack selection and  
AS2890 compliance  
could reduce the  
quantity of bicycles to  
be parked within the  
cage. Please consult  
our sales team for  
free layout drawings  
and advice.



Modular mesh panels (1500mm wide)  
allow the length of the cage to be expanded  
to provide the required bicycle capacity



Product code	Length	No of Bicycles
MHBC21	3700	28
MHBC22	5300	40
MHBC23	6800	58
MHBC24	8400	68
MHBC25	9900	84
MHBC26	11500	96

Cage length expanded using  
modular mesh panels (1500mm wide)

**Material Specifications (General)**

Structure 100 x 100 / 100 x 50 steel sections / Galvanised / Powder coated in a range of colours  
Cladding 50 x 50 x 4mm / 71 x 9 x 4mm steel mesh / Metal cladding / Galvanised / Powder coated in a range of colours

