

OCT 2016 **NEWSLETTER**

perimeter

SECURITY PRODUCT NEWS



2

BOLLARDS

Sloping sites, Smokers bollards, Potts Hill, Stainless steel bollards exported, Retractable bollards, Bollard handbook



4

BICYCLE PARKING

City of Vincent, Hollywood Hospital bike cage, AS2890.3 guidelines, Green star compliance, Leda consulting services



6

GATES

Sliding boom gates, Solar powered modular gates, Swing gate automation, Royal flying doctors HQ, Tri-slide gate technology, Building relationships, Dual turnstile, Harley Davidson store protection



13

DOCKS AND DOORS

Loading docks, Insulated panel lift doors, Westpac helicopter hangar doors

NEWS

Install and Service Award, Omgate automation, Long term service award

Royal Flying Doctor Head Quarters



Westpac Helicopter Hangar Doors



Sliding Boom Gates



Solar Powered Modular Gate

BOLLARDS

Potts Hill

Leda Security partnered with Urban Growth NSW and Standby Property Maintenance to deliver a solution to provide protection against unlawful entry into Purvis St Reserve Potts Hill.

The solution consisted of 8 fixed and 4 removable stainless steel bollards across two separate driveways. The bollards were finished off with stainless steel dress rings to give an architectural pleasing finish.



Stainless Steel Bollards Exported

Our High Security Manager Heng Cheng recently took some photographs of our Slimline Stainless Steel Bollards installed at the "Fairmont Hotel Makati" in Manila.

The locking and removable (model SP150R) were supplied from Leda Ningbo to "Guardall" who organised the installation. With waist height locking the bollards can be quickly and easily removed to provide vehicular access.

Guardall have also installed one of our SP90R bollards at the main entrance as a sample. It is planned that they will replace the plastic cones which are currently in use.



Smokers Bollards

Leda's bollards are renowned for their ability to stop hostile vehicles. However, our bollards have recently been (involuntarily) deployed as part of a creative initiative to highlight recent changes to the City of Sydney's efforts to impose a permanent smoking ban on Pitt Street Mall, in the Sydney CBD.

It is great to see our bollards being part of a health promotional message on such a high profile site. The second hand smoke and associated health risk is definitely a key concern to everyone, including our service teams. Great Initiative!



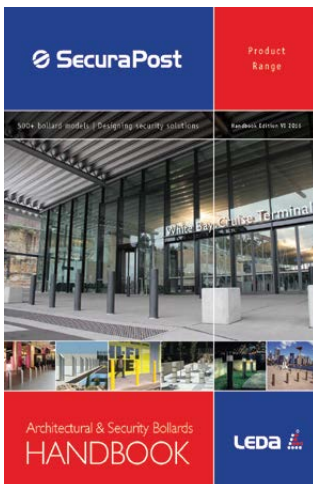
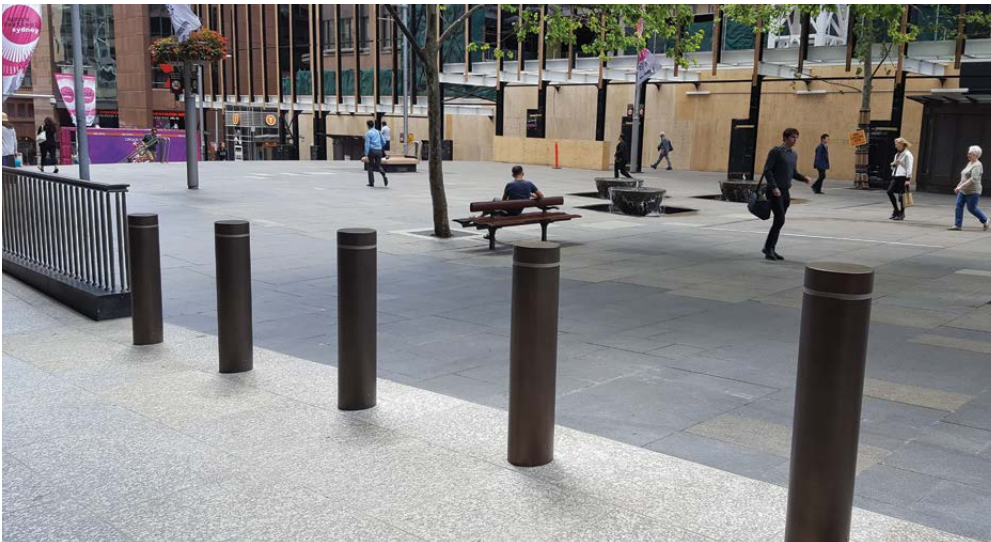
Sloping Sites

The challenge of installing bollards on sloping sites cannot be over exaggerated particularly when they are required to be installed into existing pavements.

In this instance our installation team had to remove the granite paving in order to undertake the required civil works and then replace the paving around the

BOLLARDS

bollards. The external bollard sleeves are actually stainless steel which were treated with a bronze axolotl finish to complement existing metal balustrading.



New Bollard Handbook

Edition "6" is nearing completion and will become available in November 2016.

This comprehensive and helpful design handbook has been popular with architects around Australia as the go-to reference manual for over 20 years.

The new edition contains updated design information and technical details as well as many new and exiting models.

To register your interest in receiving a copy please email pamela.b@ledasecurity.com.au

Electro-mechanical Retractable Bollard

Leda has recently introduced a new Electromechanical Retractable Bollard that has achieved a performance rating of V/2500 (NIG)/64/90:5.0. This involved an impact testing of a 2500kg vehicle at 64km/hr.

The bollard has a raise or lower time of 10 seconds and are available in either powder coated steel or electro polished stainless steel. Being electrically powered rather than hydraulic or pneumatic it only requires a small wall mounted control cabinet.

The test was conducted by MIRA in the United Kingdom.

BIKE PARKING



Green Star Compliance

Leda Security partnered with CPB contractors to work on a solution to deliver a minimum of 318 bike racks to the 177 Pacific Highway North Sydney project.

We needed to deliver these racks across multiple areas so the client could be 5 green star compliant. 177 Pacific Highway is considered as the newest and tallest A grade office tower in North Sydney comprising both commercial and retail tenants.

Leda's bike parking design team worked tirelessly and continued to draw up revisions based on site conditions as they come up to deliver the result the client required.

The Leda products used were a mix of CBR2GS dual height, BR2101 vertical racks, BR475B, SBR11F rails and BR66F wall racks.

Leda Consulting Services

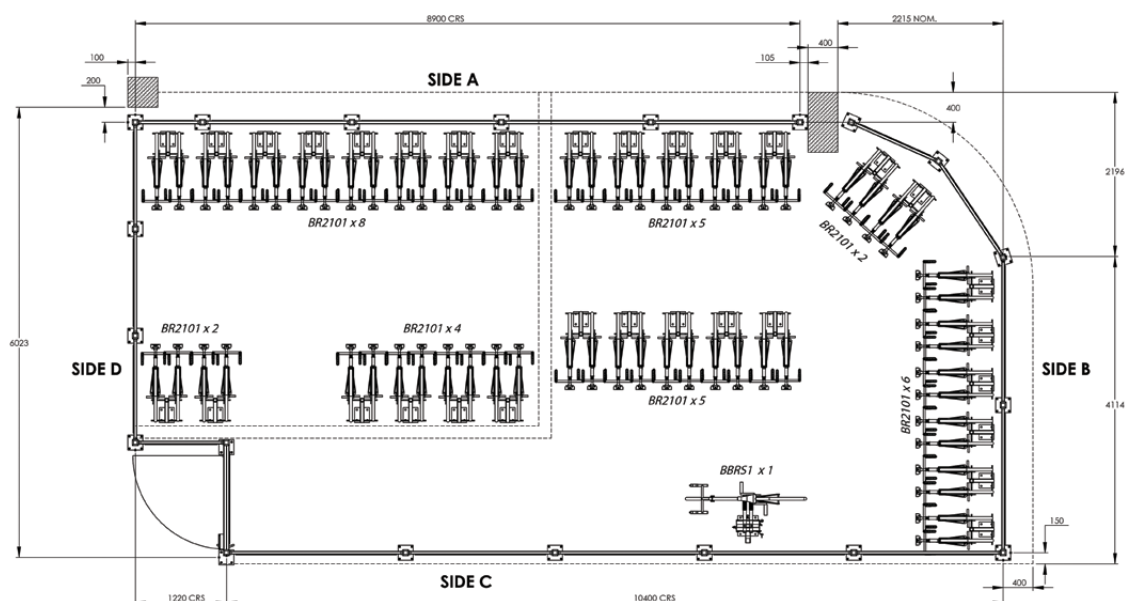
Leda is assisting architects across Australia with free design support with **end of journey facilities** for cyclists.

With over 20 years industry experience our design engineers have a wealth of experience to assist architects by providing various options to best utilise the areas allocated for bicycle storage.

In utilising the space reserved for bicycle parking Leda can assist with providing suitable options relating

to bicycle rack options, compound or cage perimeter, access control and pedestrian gates, ancillary equipment such as **bike repair stations**.

Leda staff can also provide budgetary costings and of course our experienced installation staff can project manage and install the facility if required.



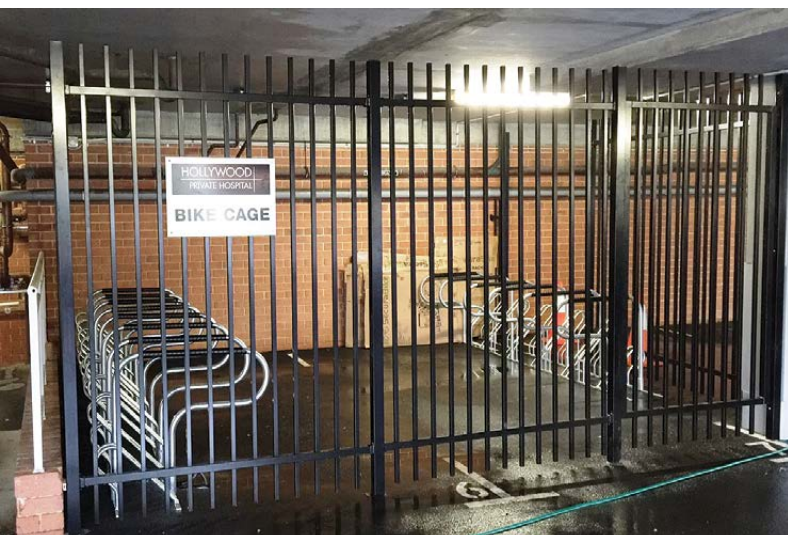
BIKE PARKING

Hollywood Hospital Bike Cage

No it's not in Los Angeles. This small bike parking facility was designed, manufactured and installed by our Western Australian team for Ramsay Health Services employees at their **Hollywood Private Hospital in Perth.**

In sacrificing two car spaces we were able to provide them with secure parking for 28 bicycles.

Access to the cage uses the hospitals swipe card system.



AS2890.3 Guidelines

We have witnessed quite a lot of confusion from both architects and builders with regard to **bicycle parking** and **end of journey facilities for cyclists** since the revised AS2890.3 was released in 2015.

Many of the changes to the standard can have a severe impact on the cost and the space requirements involved in installing these bicycle facilities. We have developed a new publication **Design Guidelines for AS2890.3** to assist in both designing and selecting the appropriate products.

At the same time we need to emphasise that AS2890.3 **is not a mandatory standard**. If however the project is being designed to **Green Building Council of Australia's** green star rating system then AS2890.3 requirements need to be adopted.



To receive a copy of these helpful guidelines please email pamela.b@ledasecurity.com.au or go to the downloads page on www.securabike.com.au

Love Comes to the City of Vincent

The city of Vincent in Western Australia ordered a number of Securabikes

heart shape bike rails which have been installed at community sites within the city.



GATES



Double Swing Gate

Our Adelaide office only just completed this double swing gate set in the Barossa Valley.

This is the welcoming entrance for all visitors to the winery and so it was extremely important to ensure the design fitted into the requirements.

There was significant changes to the final finished appearance and coupled with the new stone wall, the entrance looks extremely impressive.

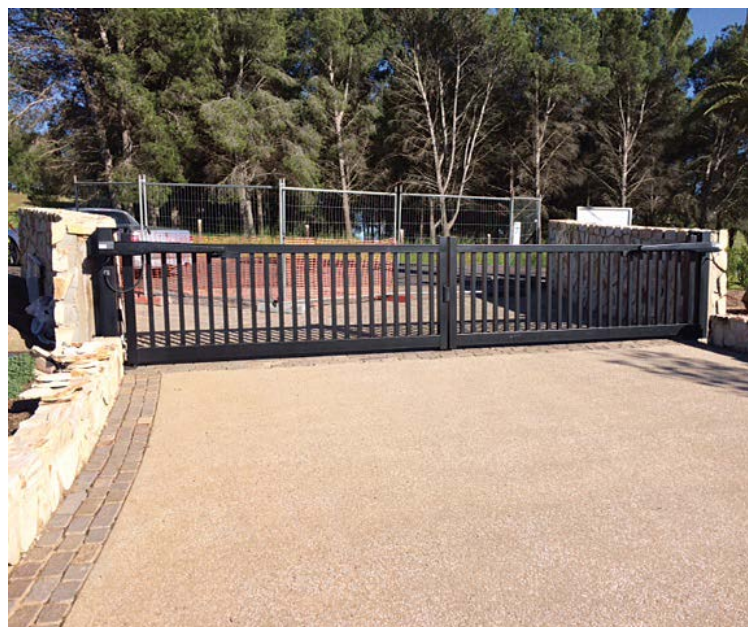


Solar Powered Modular Gate

Leda's Victorian office were recently contracted by **Gippsland Water** to replace a pair of manual swing gates with an automated solution.

The major hurdle we needed to overcome in installing a powered gate was that the project was in a rural location with no electricity available. Our engineering staff solved the problem with one of our modular track gates which could be assembled on site without the need for a crane.

We also supplied and installed a Leda **Solar Powered Pack** designed to meet the gates expected operating requirements.



Swing Gate Automation

In another retrofit Leda's Victorian office were given the task of automating existing swing gates for a Melbourne based component manufacturer. It provided our design team with some significant challenges.

We had to first re-establish support beams on the gate and then determine which equipment would provide the high wind resistance that the gates require on this site.

Leda's technicians were able to successfully complete the automation to both a very large swing gate as well as a set of double gates.

GATES

Building Relationships

Establishing a strong relationship with our clients by going the extra step has certainly paid off for Leda in Victoria.

We commenced doing work for the Victorian Country FireAuthority in 2015 and since then supplied and installed our industrial gates at a number of their depots.

The latest involved securing their South West Regional Headquarters with a series of vehicular and pedestrian gates.

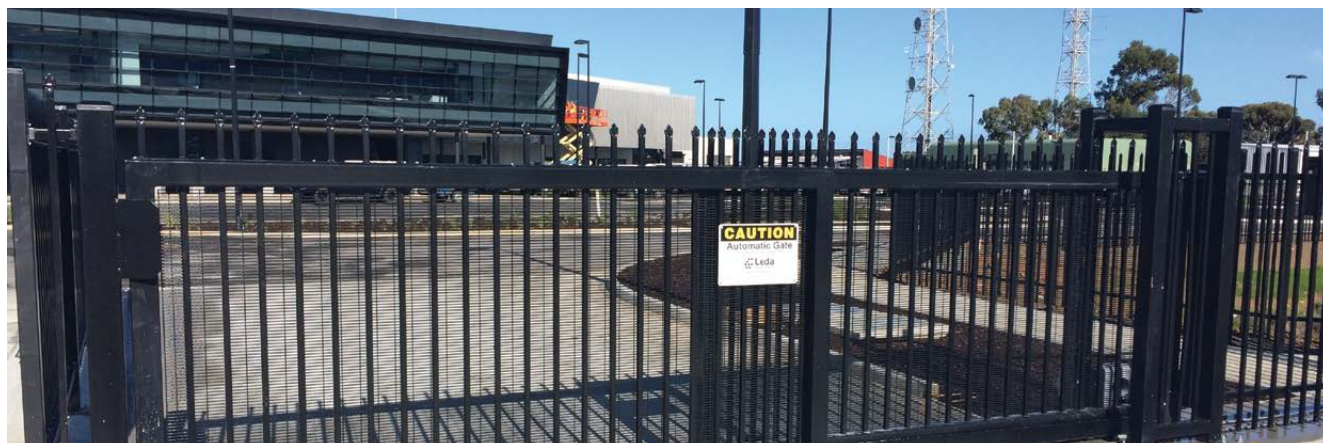


Royal Flying Doctor Headquarters

When there is insufficient room to install a conventional track or cantilever gate the answer often lies in engineering a bi-sliding gate. They can be manufactured and supplied either as surface or overhead track mounted.



Leda's South Australian office recently encountered just that problem and were able to overcome it using our bi-slide gate designs. We subsequently completed a large installation at the **Royal Flying Doctor Headquarters** near Adelaide airport using bi-sliding gates on the entry and exit driveways.



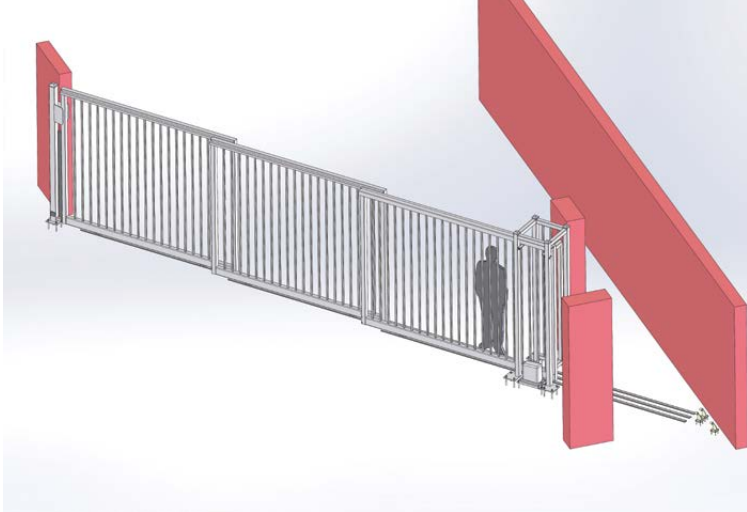
GATES

Tri-slide Gate Technology

Leda's engineers have been designing Bi-slide technology into gate designs for many years however we seldom need to go to three leaf gates.

Leda Security have worked extremely closely with the architect and consultants to develop a tri-slide automated gate system for an underground car park for a large high end apartment project in the eastern suburbs of Melbourne.

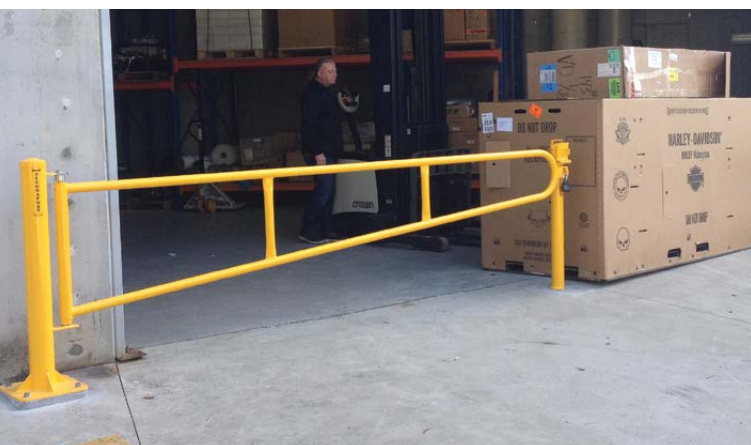
The car park will need to service a large volume of vehicles and due to the extremely tight space and



the need for security, Leda was asked to design a three leaf auto gate system. It will operate with keyless entry and induction loops for free to exit.

As with all gates that Leda manufacture our engineering department complete a full set of working drawings prior to manufacture, which are then forwarded to the client for sign off and to ensure that we can plan for an easy and trouble free installation.

This project is in the design stage with installation planned for November.



Harley Davidson Store Protection

Leda's Sydney office recently assisted one of our clients (AG Security) secure the loading area at Harley Davidsons Head office in Sydney.

It involved supplying a pair of our MSG standard swing gates allowing access to either half or all of the 6 metre opening. The gates securely lock into a **Locking and Removable Leda Bollard** which can be unlocked and quickly removed if needed.



Dual Turnstile

Our South Australian team has been busy in the Barossa Valley having recently installed this dual turnstile and fencing for a local distribution company.

The turnstile is part of a project to provide better access control to their site which will also require boom gates for vehicle control.

GATES

Sliding Boom Gates

Leda's sliding boom arms were first designed and engineered more than a decade ago however it is still quite interesting to revisit this unique product.

When first designed they were adopted and installed on the entrances for a number of National Parks around the country. The remote locations of many of these installations resulted in this Leda product being one of our first products to incorporate Solar powered drive motors and GSM technology which allowed them to be operated by mobile phone remotely.

THE SLIDING BOOM CAN BE MANUFACTURED TO CATER FOR UP TO 9 METRE OPENINGS, PROGRAMMED TO OPEN AND CLOSE AT SPECIFIC TIMES. PREVENTING VEHICULAR PENETRATION IT STILL ALLOWS HIKERS, PEDESTRIANS AND MOST IMPORTANTLY FAUNA TO EASILY TRANSIT THE BARRIER.

Just recently a Victorian Council required two of their sports fields to be closed off after hours. In this instance

we manufactured and installed two 8 metre units. They are pre programmed to operate on a timer, however can be overridden with remote access using GSM operation. Note the flashing lights which were added for additional safety.

With other Leda Departments involved in securing many of Australia's high profile sites it was not long until the sliding boom engineering saw it being used as a high security and anti-terrorist product helping secure icons such as the **Sydney Harbour Bridge** pylons and entrances to the **Federal Parliament in Canberra**.



INTERNATIONAL BIKE PARKING SINGAPORE

Stainless Steel Bike Racks

When the prestigious Marina Bay Sands Hotel decided to install bicycle parking for their staff they turned to Leda for advice and product.

Due to the marine location Leda's Ningbo office recommended our stainless steel (Grade 316) CBR45C racks. The hotel subsequently contracted Leda to manufacture and supply a quantity of these racks which as you can see are being well utilised.



Bike Racks for Schools

Hiap Soon Pte Ltd, Leda's newly appointed distributor in Singapore had recently installed their maiden project comprising 13 units of CBR2GS double decker bike racks at the venerable 90 year old Tanglin Trust School in Singapore recently.



Tanglin Trust is one of Singapore's premier international schools focusing on a British schooling system targeting the expatriate community in Singapore. The installation of CBR2GS double decker bike rack was part of a wider program. The program began in September and it is really encouraging to see the children are getting increasingly familiar with their bikes and protective gear.



Sentosa Bike Repair Station

The Sentosa island resort in Singapore recently installed a number of our **Bike Repair Stations** at various bike parking locations around the resorts bike paths.



INTERNATIONAL BIKE PARKING CHILE



Bike Cage in Santiago

Edwin Romero our Securabike distributor in Chile recently sent these details of a small bike cage they installed for the "Santiago Health Service" in Santiago.

The bike racks installed in this mini bike parking project are our BR2101 vertical racks.



Bike Racks in United Nations Office

Securabike Chile distributor recently installed our CBR4SC racks in United Nations Office, Santiago.

It was installed in five different locations allowing parking of 16 bikes in each location. A total of 80 bikes can be parked prominently.



NEWS

Omgate Automation

Leda is at the leading edge of technology, and with the success of operating gate automation with a mobile phone via the GSM network, Leda can now offer an even simpler method by providing automation with bluetooth technology.

Pair your phone to your automated device for convenience. You can enroll safely and securely unlimited users to access your property if required. Connects to any automated device, whether it is a boom gate, security sliding or swing gate, retractable bollard or anything similar. Call us today if you would like more information.

OMGATE Leda

TRANSFORMING YOUR GATE SYSTEM WITH TODAY'S MOST ADVANCED CONTROL AND MANAGEMENT APP

NO REMOTE CONTROL. NO "PHONING" THE GATE. JUST ARRIVE AND ENTER

HOW IT WORKS, EASY AS 1, 2, 3...

1. Install the Gate Controller on your garage door unit and control it with Omgate app.
2. Get the app omgate.mobi download
3. With Omgate, the door will automatically open for you when you arrive.

USER AND GATE MANAGEMENT EASY INSTALLATION RESIDENTIAL AND COMMERCIAL



Install & Service Award

Leda's Queensland branch is the winner and recipient of the prestigious 2016 trophy.

Greg St Baker, Leda's Queensland State Manager is seen here receiving the award from Leda's Managing Director David Matthews.

20 Years of Service

Dee Vranjes became the second employee to notch up 20 years continual service at Leda in August. Dee has been an integral part of Leda's NSW Sales office and has often commented how she has witnessed many changes during that time. As Leda Security Products only commenced operations in Jan 1994 she certainly can lay claim to the fact. Over the years she has been both a mentor and inspiration to many staff that have joined the company.

Dee and her husband recently enjoyed an extended European vacation by utilising some of the long service leave entitlements she had earned and accumulated. Congratulations Dee from all your Leda colleagues on reaching this 20 year milestone and once again thank you for all your assistance.



Hangar Doors for Westpac Rescue Helicopters

Leda Queensland have been awarded the contracts for the design, manufacture, supply and installation of two vertical bi-folding doors for two new hangars being built by the Westpac Rescue Helicopter Services in Belmont and Lismore.

The Belmont project is being built by Core Project Group and Lismore by Greg Clark Building. Each door will be 16m wide x 7m high and will be fully certified to meet local wind and terrain requirements. The Westpac Rescue Helicopter Service has been providing emergency services in NSW since 1975 and these two new hangars will help their rapid deployment.

DOCKS & DOORS



Loading Docks for CSR Project

Leda Security Products were engaged by CSR Bradford to install 4 new docks to their site at Ingleburn. These docks were Hydraulic (single cylinder) embedded dock levellers.

As part of this project Leda had to design and manufacture a steel base frame so the dock levellers could be installed in this structure. The docks were required to be suspended at a height in this structure so they would be level and meet up with the existing dock platform levels.



The steel bases were manufactured with adjustable legs that allowed the docks to be accurately positioned on site. The legs were then welded in their final position.



Insulated Panel Lift Door

Leda recently installed one of our S80 panel lift door for Adco Constructions at Cranbrook Residential Aged Care Facility.

The 80mm door was selected for its thermal/acoustic properties. The door was supplied in RAL colour specified to match interior painting. Two electronic keypads fitted by the building security contractor involved a simple connection by Leda to enable operation of the door from both inside and outside.

MESSAGE FROM THE MANAGING DIRECTOR



Combatting Terrorism

As you have no doubt observed in this newsletter, Leda is involved in a wide and numerous range of bespoke projects around the country where our *Engineering, Design and Production departments* are challenged. This is no more relevant than to the growing number of high security projects and sites where we provide our experience and expertise to combat the growing threat of terrorism.

As one of the leading Australian companies operating in this field we do not simply manufacture and install physical protection, we also assist high profile public companies and various government departments by providing consulting services on how to improve their perimeter security and vehicle access control. These services include:

- Site assessments
- Developing a systems overview
- Draft product specifications and working drawings for tender

Leda has been actively involved in providing these services since the aftermath of the September 11th tragedy and when Australia first had to react to the threat of terrorism.

Our first project was "The Sydney Opera House" and today we are still actively providing our services and products on this Australian icon. We are also actively involved outside Australia in Asian countries including Singapore, Malaysia, Philippines and Papua New Guinea. These types of projects require 'non disclosure clauses' so they normally never are discussed or receive any publicity, however myself and many other Leda staffs are proud of the work and the projects that we undertake to make Australia a safer place against the risk of terrorism.

David R. Matthews
Managing Director

Head Office

Design, Engineering,
Manufacturing and
Accounts
18 Reliance Drive,
Tuggerah NSW 2259
Tel: (02) 8413 3430
Fax: (02) 4353 2255

National Sales

1300 780 450



Sales Offices

New South Wales

8/185 Briens Road,
Northmead, NSW 2152
Tel: (02) 8413 3410
Fax: (02) 8677 7119

Queensland

2/387 Lytton Road
Morningside, QLD 4170
Tel: (07) 3613 8270
Fax (07) 3399 5688

Victoria

2/89 Enterprise Way
Sunshine West VIC 3020
Tel: (03) 8399 8150
Fax: (03) 9315 1085

South Australia

1/5 Tooronga Ave
Edwardstown, SA 5039
Tel: (08) 8374 3266
Fax: (08) 8374 3299

Western Australia

1/27 Century Road
Malaga WA 6090
Tel: (08) 6430 1670
Fax (08) 9209 2860



PUBLISHED BY: Leda Security Products Pty Ltd ABN 23 067 258 235