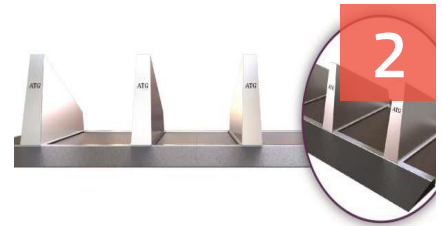


MAY 2017 **NEWSLETTER**

perimeter

SECURITY PRODUCT NEWS



BOLLARDS

The Surface Guard, New Perth Stadium Contract, Security Bollards, Star Casino Bollards, Air Tree Root Mapping



BICYCLE PARKING

Dual Height Racks, Bike Repair Station in Holdfast Bay, Corral Racks, Bike Racks in Unilodge Student Accommodation



GATES

Security Upgrade, Swing Gates the Answer, Barossa Vineyard Entrance, Melbourne Modular Track Gate, Track Gate in Remote Locations, Modular Cantilever Gate



NEWS

Total Facilities Exhibition, Bike Expo in Beijing

STAFF NEWS

Tony Hudson, Ningbo Team



Perth Stadium Bollard Contract



Designing for Security



Security Bollards



Modular Track Gate

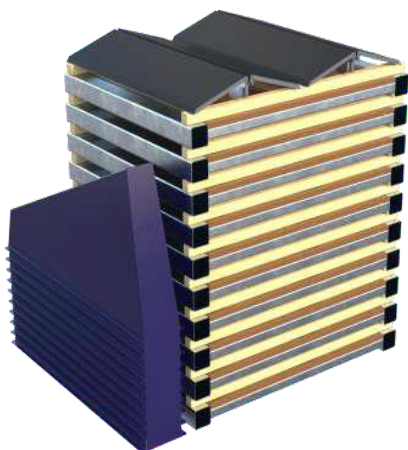
BOLLARDS

The Surface Guard

ATG recently released 2 new innovative **High Security Products** at the **Security and Counter Terror Expo** in London.

The **Surface Guard** created enormous interest from the 10,000 attendees including representatives from **Gold Coast 2018** (Commonwealth Games Organisers). The surface guard has been designed for temporary event protection and is supplied in modular units (1.2m wide) which are easy to transport and install.

The system can deal with road cambers and changes in levels as a result in kerbs and traffic islands. ATG advised that they had designed the system so that members of the public are protected without feeling they are entering a fortress zone.



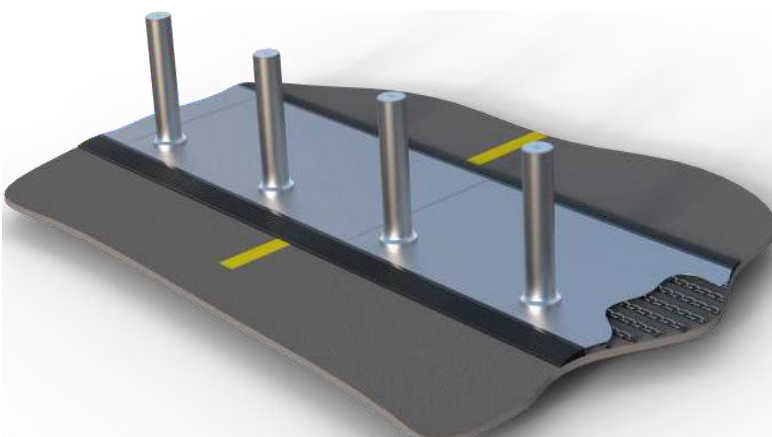
- Aesthetically pleasing solution
- Lightweight and easy to transport
- Rapid deploying
- Quick to remove
- Small storage footprint
- Can be reused on multiple sites
- Additional accessories available



Surface Mount Technology

The second product/system is a surface mounted bollard system that can be quickly deployed at crowded venues either as a temporary or permanent solution. The product is fully tested to PAS68 using a number of anchor end configurations.

It has also been designed to accommodate a vehicular gate. Leda is now able to assist in the supply and installation of both these systems in Australia.



BSI: PAS 68 V/7500(N2)/48/90:0.0/0.0

New Perth Stadium Contract

Leda's Perth office has recently been awarded a major contract by Brierty Ltd. to manufacture and install all the various bollards required for the project.

The new Perth Stadium which is nearing completion will have a 60,000 seat capacity making it the 3rd largest stadium in Australia.

The majority of the bollards will be installed on the exterior of the stadium at the northern and southern concourses and include both architectural and impact rated bollards.

A number of Leda's fixed and retractable bollard models were specified on the project by the architect and installation which is staged will commence in May. The majority of the bollards will be supplied in stainless steel.



BOLLARDS

Security Bollards

Did you know Leda not only manufacture a complete range of bollards including security and ram raid bollards, but also can come to site and install them for you as well.

In these two sites, our Victorian team needed to core drill into existing concrete a large quantity of protective bollards for a new car yard and the other site is liquor drive through which is protected by security removable bollards when they are not trading.



BOLLARDS

Air Tree Root Mapping

Excavating to install **Security Bollards** in Sydney's CBD is never easy due to the vast number of environmental issues that need to be addressed and approvals sought before work can commence. In this instance a 600 x 600mm strip footing was required.



On this sensitive site special care needed to be taken to minimise any potential root damage to existing trees. A specialist air knife operator (only one in NSW) was used to blow away dirt and stones to expose the roots to indicate their size and direction.

Sydney City Council Inspectors and Leda's Project Manager then determine what action needs to be taken. Where possible, bridging of the concrete footing (over the roots) or even directing the concrete footing will be taken. On this large installation only 2 trees were eventually removed.



While we were able to save many of the trees this one unfortunately could not be



Star Casino Bollards

Leda Security were engaged by Probuild to install bollards throughout Star Casino in Sydney. The client had engaged a consulting engineer who provided Leda a custom bollard specification.

The bollards were also to be installed to their specific details. The bollards were to be positioned around escalators and lifts to mitigate against vehicle impacts into glass and pedestrians.

The initial order was for 78 bollards, yellow powder-coated IBR150BA bollards with custom extra thick baseplates. They were to be fastened with M20 chemical anchors through the slab 'sandwich' style approach which is useful for distributing the load throughout the concrete slab.

Due to the success of the initial installation, Leda was commissioned to provide an additional 17 bollards in yellow powdercoated mild steel and 7 off in stainless steel to the same specification.



The bollards were positioned throughout public areas within the casino where finishes and installation detail must be of the highest quality to match the surrounding. Leda's production and installation teams were working to strict time-frame set by the client and sought to meet each deliverable within the required timeframe.

On completion of the project, *Star Casino contacted Leda to offer praise regarding the look and finish of the bollards we supplied and installed on the project.*



BIKE PARKING

Dual Height Racks in Blue Sky Apartments

The Blue Apartments recently completed by Built Pty Ltd (QLD) has been designed to cater for 800 international students studying in Brisbane. The student accommodation industry is big business with 4 other apartment blocks under construction in the South Brisbane area.



Bicycle use is the main form of transport for students and the requirement for 486 bicycle parks in a very tight basement were accomplished using the popular CBR8M dual height racks. Logistics of the install involved building all racks and placing into position as other trades cleared the space. The student population were using the racks even before Leda had a chance to bolt them down.



Bike Repair Station in Holdfast Bay

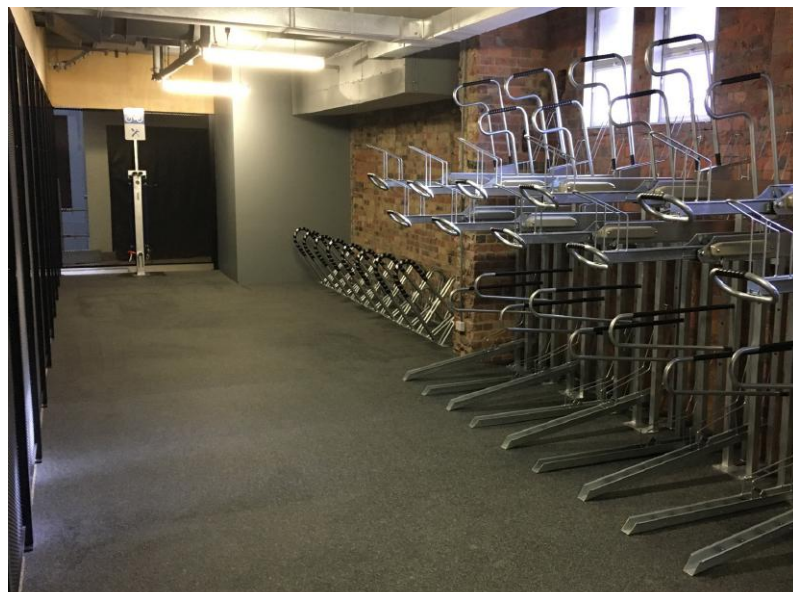
Leda SA just completed an installation of our **BBRS01 Bike Repair Station** which is our most popular and biggest selling bike repair station. With numerous installations around Adelaide and surrounds this will be a welcome addition to the support given to cyclists in this state.

The station was selected by the Rotary Club of Somerton Park and they very kindly donated it to the City of Holdfast Bay for a new bike facility. For those that are not from SA, Holdfast Bay encompasses the beach side area of Glenelg and is a popular spot for cyclists, so this station will serve their area well.

Racks in Brunswick Mall

AM Valley Heart are refurbishing their historic warehouse in Brunswick mall in Brisbane's China Town. The warehouse has been fully fitted out inside including a purpose built EOTF on the first level.

Parking for 48 bicycles using dual height CBR2GS and single level CBR4SCTM (fully welded) with wide lanes have produced an exceptionally functional and easy to use facility. Access controlled swipe cards automatically open the swing doors to allow hand free movement, and access to showers and locker facility. As with all great EOTF a bike repair station was included (BBRS01).



Corrall Racks

ADCO Construction recently completed the QUT Kedron Brook multipurpose sports arena, this facility included an end of trip bicycle storage. The bicycle racks were the CBR4SCTM fully welded finished in hot dipped galvanised.

BIKE PARKING



For public parking QUT also purchased a *Cadillac Bike Rack* located at the entrance. This rack was finished white to match the QUT corporate colours. Leda was involved with suggested layout design and aisle spacing.

Unilodge Student Accommodation Bike Racks

ADCO Constructions are in the final stages of completing the UNILODGE student accommodation in South Brisbane. The project will house 860 overseas students studying at



the nearby Universities. The close proximity to the city makes the use of bicycles an ideal mode of transport with bicycle lane ways and bridges being close at hand.

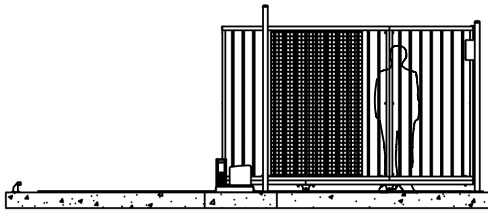
The architect has designed wide passage ways and 1000mm spacing between racks into the facility, which makes for an open and user friendly EOTF.

NEW MODULAR TRACK GATES

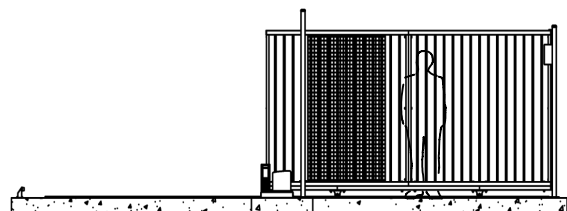
INCREDIBLE VALUE



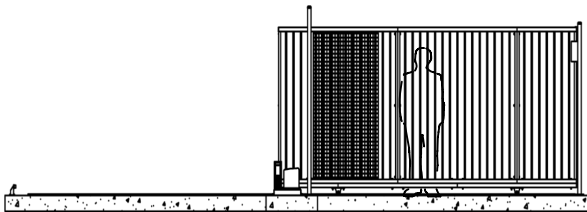
MTS26



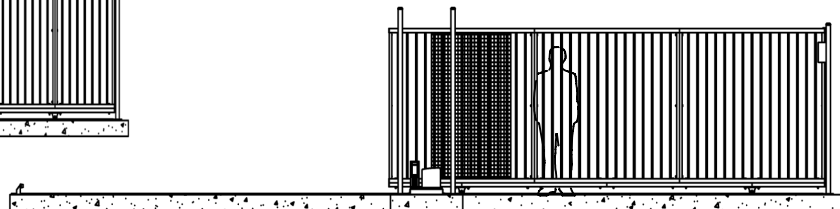
MTS37



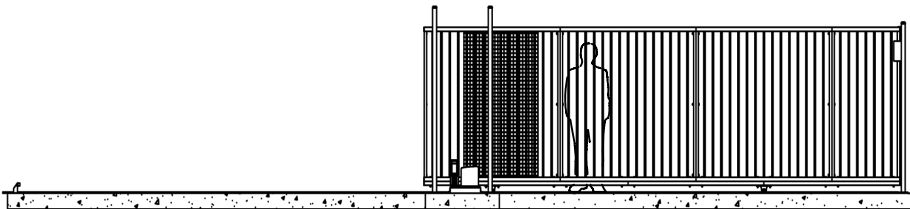
MTS48



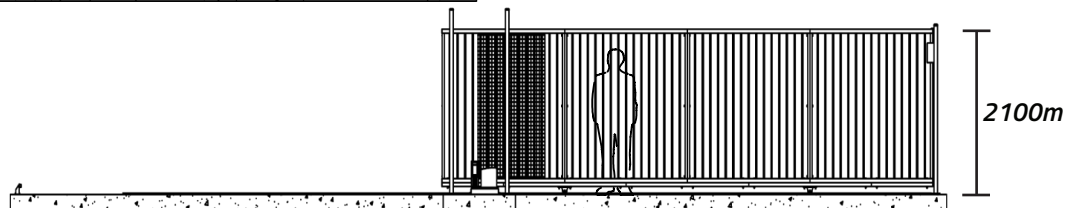
MTS55



MTS65



MTS75



Available in 6 sizes:

- MTS26: 2.6m clear opening
- MTS37: 3.7m clear opening
- MTS48: 4.8m clear opening
- MTS55: 5.5m clear opening
- MTS65: 6.5m clear opening
- MTS75: 7.5m clear opening
- All 2100m high

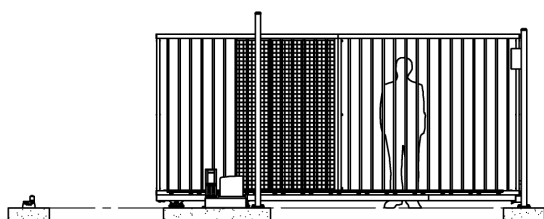
- Supplied in kit form
- Reduced freight costs
- Various economical operating options
- Two modular panel sizes provide various clear openings

NEW MODULAR CANTILEVER GATES

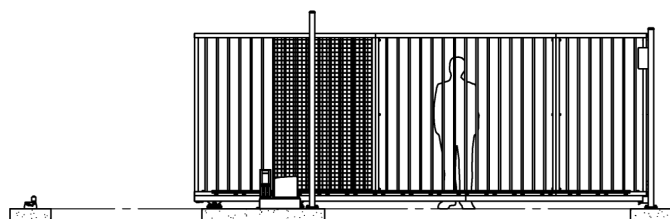
ledasecurity.com.au

SOLAR AVAILABLE

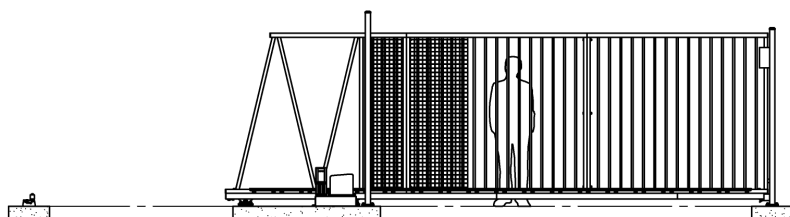
MCL30



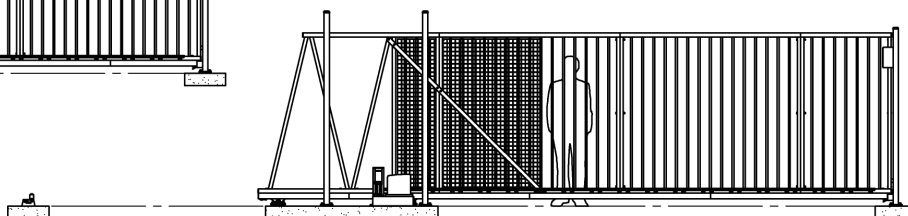
MCL39



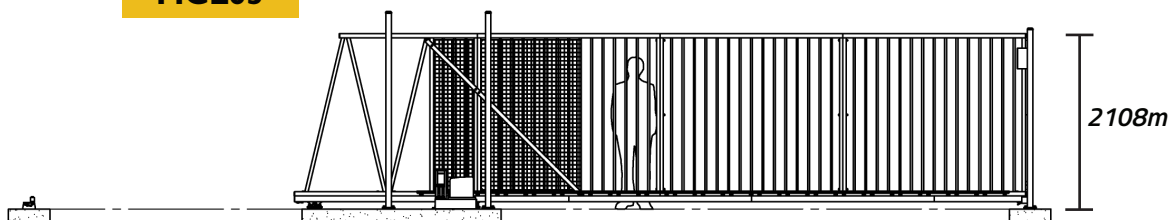
MCL47



MCL55

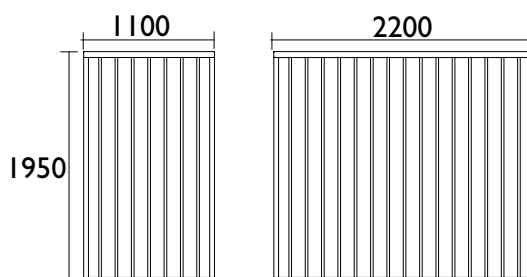


MCL63



Available in 5 sizes

- MCL30: 3.0m clear opening
- MCL39: 3.9m clear opening
- MCL47: 4.7m clear opening
- MCL55: 5.5m clear opening
- MCL63: 6.3m clear opening
- All 2108mm high



GATES

Security Upgrade

While we normally associate this type of brief from CBD clients in this instance an old established manufacturing business in Ballarat commissioned Leda to upgrade their perimeter security and vehicular access control.

The site required a 7 metre entry and a larger 10 metre exit gate. The larger exit gate was on a sloping site and required Leda's engineers designing a considerable amount of raking into it while still ensuring it ran smoothly.



Both gates operate by either remote controls or bluetooth (phone apps). There was also an electric pedestrian gate which is accessible for staff via a swipe system and visitors by intercom system.

Swing Gates the Answer

Quite often the only solution to providing an automated gate will be a **Swing Gate Solution**. In this inner city location there was not sufficient space for either a Track or Cantilever gate to be installed.

A pedestrian gate was also added to cater for staff entering and exiting the premises.

The client's business operates 24 hours and our technicians were able to program it for conventional operation during daylight hours and bluetooth phone operation after hours.



Barossa Vineyard Entrance

These half height swing gates were finally finished by Leda's South Australian team to complement an elegant entrance to this boutique Vineyard in the Barossa Valley.

GATES



The simple classic gate design complements the stone clad walls that form the vineyard entrance.

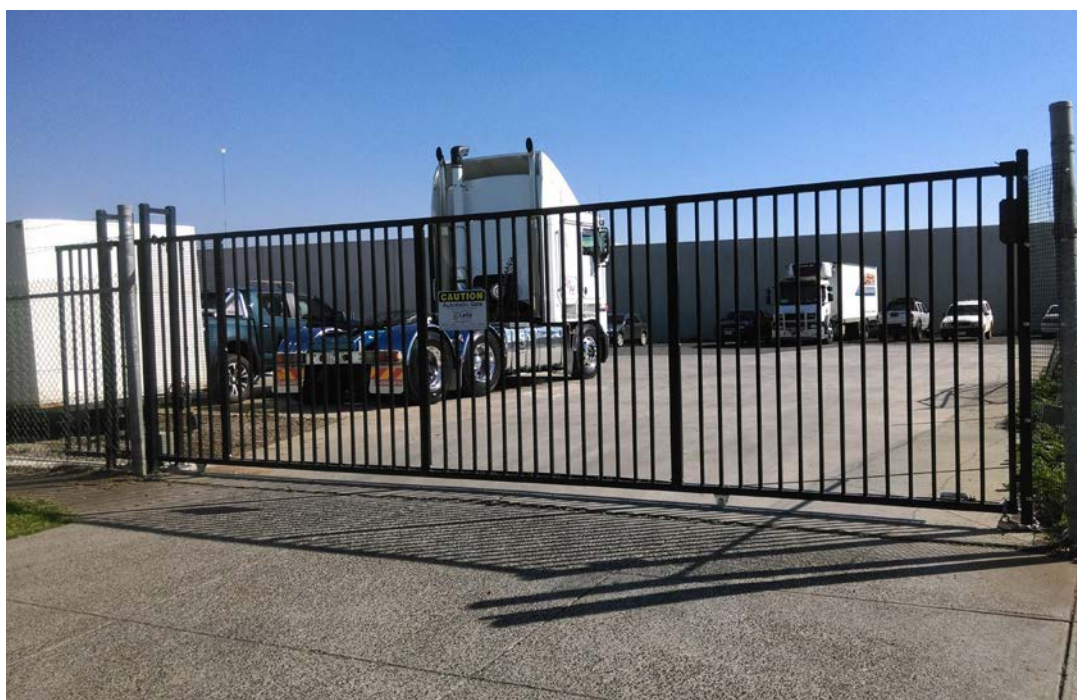
Melbourne Modular Track Gate

Our install team has just installed another successful modular gate system into a transport compound in the western suburbs of Melbourne.



Traditionally these modular gates are designed to cover an opening of six meters however in this case it needed to be extended. The modular track gate design has now been re-engineered and can now span at 6.6 metres.

In this case the client opted to operate the gate via a bluetooth device.



GATES

Track Gate in Remote Locations

Another large 12m x 2.4m high track gate was installed in early April for a national electricity generation and retail company.



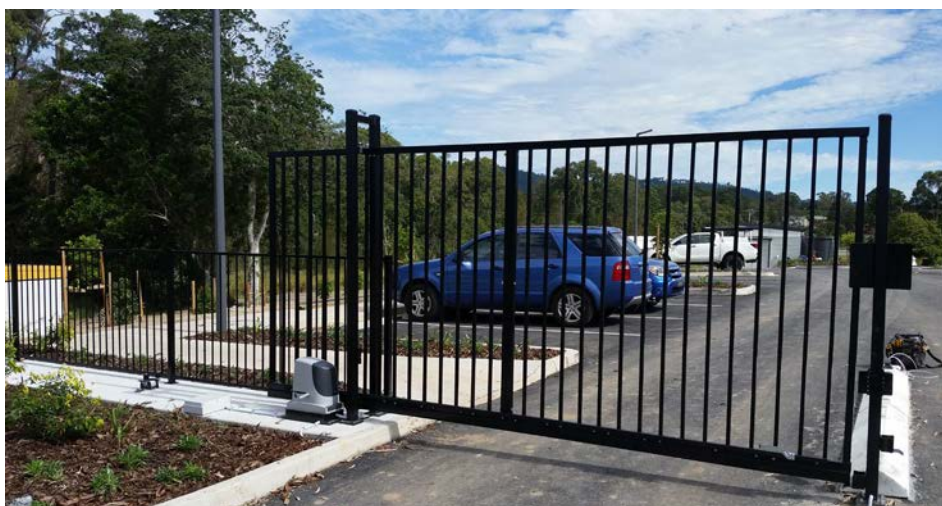
Leda have been supplying and maintaining their gate automation products for many years with some of our gates in extremely remote locations.

Our service technicians are normally able to schedule preventative maintenance servicing of the equipment at the same time however in isolated instances we still need to cater for urgent breakdowns and respond quickly.

Modular Cantilever Gate

The Carinity Aged Care facility required a separate staff parking facility secured by access control swipe cards. The gates were a late addition to the facility and to install a standard track sliding gate would have involved rework of the landscaping already completed in that area.

Leda Security was just in the last stages of testing the new modular cantilever gates which utilise an undercarriage system. The gates could be retrofitted into the existing location with minimal disruption. It was decided to use two 3.2m gates with a common receiving post instead of a single gate. The result is a fast efficient installation that blends in with the surrounding fencing system.



TECHNICAL

Tested V Engineered Solutions

While Leda has an expansive range of PAS68 tested and certified products these come at a price due to the high cost of testing.

We are also able to offer our clients an alternative more economical engineered solution using locally sourced and manufactured materials that provide similar impact resistance performance. Using the extensive experience and knowledge we have accumulated over the years of installing this type of equipment, (particularly with shallow mount and concrete footing designs) our engineers can provide a certified (but not tested) option.

The Engineered solution is not only more economical, it assists in reducing lead times and will normally fit within the projects budget.



Designing for Security

Leda Security Products Pty Ltd has been at the forefront of manufacturing, supplying and installing **Vehicle Security Barriers** in Australia for more than 20 years.

During that time our company has been involved in various R&D and impact testing programs here in Australia and in the United Kingdom providing invaluable data for our Design Engineers and Project Managers.

Consequently Leda have developed the largest range of Vehicle Impact tested and Engineered Vehicle Security Barriers in Australia providing our clients the flexibility of sourcing the appropriate security products that meet their projects budget.

Vehicle Security Barriers Standard

The most widely used standard in Australia today for Vehicle Security Barriers are:

BSI. PAS68 & PAS69 - from the UK, which was originally drawn up in 2005. Often referred to but not used in Australia is the ASTM standard. Originating in 2007, the American standard superseded the previous DOS standard.

More recently a new impact test standard the **International Workshop Agreement 2014 (IWA)** has been developed. This standard aims to unify both American (ASTM) and UK (PAS68 & 69) impact test standards. It utilises the PAS68 testing criteria however the IWA 14 standard measures impact penetration from the front of the barrier rather from the rear. The new standard aims to unify existing certifications taking into consideration a wider range of test vehicles and most barrier equipment suppliers will test new products to this standard. In the interim both PAS and ASTM certifications shall continue to be recognised.

NEWS

Total Facilities Exhibition

After residing for three years in Melbourne the Total Facilities Expo returned to Sydney's new conference and exhibition centre with attendance at record numbers.

Leda exhibited a cross section of our products which are used by Facilities and Property Managers around the country.

Our most popular product was the dual height bicycle rack (CBR2GS) which attracted an enormous amount of attention.

This dual height rack is now being widely used in commercial and apartment buildings where space is at a premium.



The second winner of the bike from the show is Clinton Gribble, Maintenance and Facility Manager for St Andrew's Cathedral School. He was thrilled with the win. He discussed Leda providing end of trip solutions once he finds space within the school to accommodate the bikes.



Christine Byrne of Green Strata was one of the 2 winners of our Securabike Bicycles. She is seen here accepting the bike from Leda's Maksym Szewczuk.



Bike Expo in Beijing

Leda's Ningbo office recently exhibited our Securabike Bicycle Parking products at China's largest bike expo in Beijing.

This is the first time we have exhibited in China where the bicycle is staging a huge comeback as a suitable means of transport where cities are now often gridlocked with vehicles.



Tony Hudson

Leda is pleased to announce that Tony Hudson has joined the organisation and will be managing our small South Australian operation which is located in Edwardstown.

Tony has a deep understanding of gate automation and perimeter security solutions for industry. He also has a long history of property and security management and has worked with Transfield Services managing thirty five defence sites including fifteen hundred buildings.

We believe this experience will serve him well when navigating through many challenges that occur in the security industry.

Tony has lived in South Australia his entire life and is married with two children.

STAFF NEWS



Ningbo Team

After the Chinese new year holidays in February, our team have been very busy with container shipments to NZ, Australia and the USA. The team took time out for our first company ping pong tournament which was won by our Production Manager James Rossi in a thrilling final with Engineer Chen Hui.

The coming year looks to be a busy one for our Ningbo office as many of our international distributors are starting to develop solid reputations for bicycle parking design and product in their respective countries. Bollards sales are expected to also grow in 2017 as our production capabilities continue to expand. Our staff numbers in Ningbo now are 13 full time (plus casuals) as we continue to grow. Earlier this year the team did an exercise to identify their teams core beliefs which are

Collaborative	Action
Improvement	Respect

This foundation is proving to be a great asset as we welcome new staff and strive to better service our growing customers and distributors in 2017.



Richard Matthews (CEO) with winners Chen Hui and James Rossi

MESSAGE FROM THE MANAGING DIRECTOR



In the first week of May I had the opportunity of attending the *Security & Counter Terror Expo (SCTX)* at Olympia in London. The SCTX is the United Kingdom's leading National Security event for private and public sector security professionals and is held annually to bring together all this industries leading individuals and companies.

A number of parallel conferences run over two days and I was able to listen to some of the world's leading authorities speaking on this international terrorist situation and the methods, measures and strategies being adopted to combat terrorism.

Additionally there are some 350 exhibitors at SCTX, which include the three leading UK manufacturers of "*Hostile Vehicle Mitigation*" products that Leda represents in Australia. These companies are:

- ATG Access Ltd
- Geoquip Worldwide and
- Cova Security Gates

These companies are recognised as the market leaders in their fields and provide Leda with a comprehensive range of PAS68 tested and certified Perimeter Security Products.

It provided an excellent opportunity to witness first hand and be briefed on some of the new innovative products that were being released (which are featured in this newsletter) and that we will be able to shortly supply in Australia.

In addition of course Leda has a broad selection of High Security Products that we have engineered and developed ourselves over the past 23 years and which provide us with the largest range of *Anti Terrorist Equipment* in Australia.

David R. Matthews

Managing Director

PUBLISHED BY: Leda Security Products Pty Ltd ABN 23 067 258 235

Head Office

Design, Engineering,
Manufacturing and
Accounts
18 Reliance Drive,
Tuggerah NSW 2259
Tel: (02) 8413 3430
Fax: (02) 4353 2255

National Sales

1300 780 450



Sales Offices

New South Wales

8/185 Briens Road,
Northmead, NSW 2152
Tel: (02) 8413 3410
Fax: (02) 8677 7119

Queensland

2/387 Lytton Road
Morningside, QLD 4170
Tel: (07) 3613 8270
Fax (07) 3399 5688

Victoria

2/89 Enterprise Way
Sunshine West VIC 3020
Tel: (03) 8399 8150
Fax: (03) 9315 1085

South Australia

1/5 Tooronga Ave
Edwardstown, SA 5039
Tel: (08) 8374 3266
Fax: (08) 8374 3299

Western Australia

1/27 Century Road
Malaga WA 6090
Tel: (08) 6430 1670
Fax (08) 9209 2860