

perimeter

SECURITY PRODUCT NEWS

Street Furniture Products

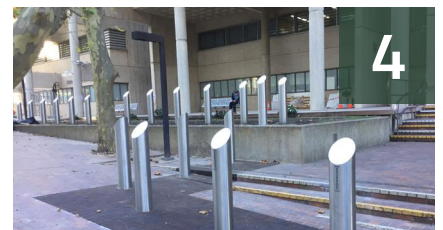


LEDA's Precast Concrete Log & Cube



STREET FURNITURE

Log, Seat Log, Raised, Bench Log, Raised Slat, Log on the Surface, Cube on the Surface, Planter Box, Litter Bin, Seating



BOLLARDS

Night Works, Bollard Sleeves, Sydney Harbour, Protecting Pedestrians, Bollard Maintenance, Securapost Wins



BIKE PARKING

Bush School Parking, Bike Shelters, Velow Up, Attractive Designs, Perth Office EOJ, Clyde Bike Cage, Securabike Chile



GATES AND TURNSTILES

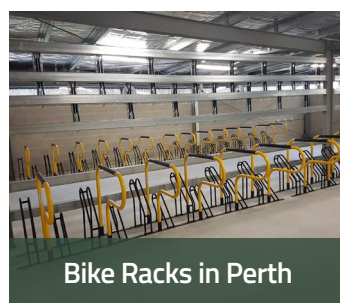
City of Casey, To the Rescue, Miti Gate, Pedestrian Turnstiles, Large Gates, Church Gate, SecurAccess, Need a Compound

STAFF NEWS

Golden Bollard Trophy, Returning Staff at Tuggerah, Security Exhibition 2017



Crash Tested Miti-Gate



Bike Racks in Perth



Bike Shelter in School

STREET FURNITURE

LEDA's existing Precast Concrete Log and Cube products can be used in various designs to prevent vehicle access control.

Australia's major cities are currently wrestling with how to improve security for pedestrians against Hostile Vehicle intrusion while not ruining the landscape and or the attractive nature of open areas and shopping precincts.



LEDA has responded to requests by a number of State and Local Government authorities for more aesthetically acceptable solutions.



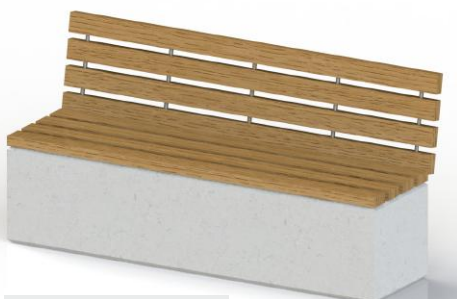
Log



Log



Log



Seat Log



Raised



Log on the Surface



Bench Log



Raised Slat



Cube on the Surface

Available in

*Grey Off the Form
Off White Lightly Sand Blasted
Bluestone Finish*

FOR
HIGH SECURITY
APPLICATIONS

STREET FURNITURE

ledasecurity.com.au



Using a unique keying pin the units can be easily attached to existing pavements providing high impact resistance.



Planter Box



Litter Bin



PAS68 & IWA-14 TESTED

Certified Street Furniture Products



Seating

Includes a range of
Seating design configurations
Planters
Bike stands

BOLLARDS

Night Works

Bollard installations in busy CBD sites often need to be carried out in off peak periods to avoid traffic disruptions. The successful installation of these high security SP1000 fixed bollards at Sydney's Wynyard Walk was conducted over a series of evenings.



Night Work Installation

Wynyard Walk provides a pedestrian walkway connecting the Barangaroo precinct with Wynyard Station. These Bollards unique to Leda with a crash rating (7.5t @ 80km/h) only require a 114mm deep footing which avoids the need for large deep concrete footings and disruption to other existing services.



Finished Job

Bollard Sleeves

The practice of installing attractive **Stainless Steel Sleeves** over thick high security mild steel bollards has gained quite a bit of momentum in recent years.

In many instances this can provide a more economical option and in the event of the bollard being damaged, replacement is quick and simple.

At this recently completed installation our **Regal Sleeves** with sloping tops were used to provide a more aesthetically attractive appearance.



Stainless Steel Sleeves over Mild Steel Bollards



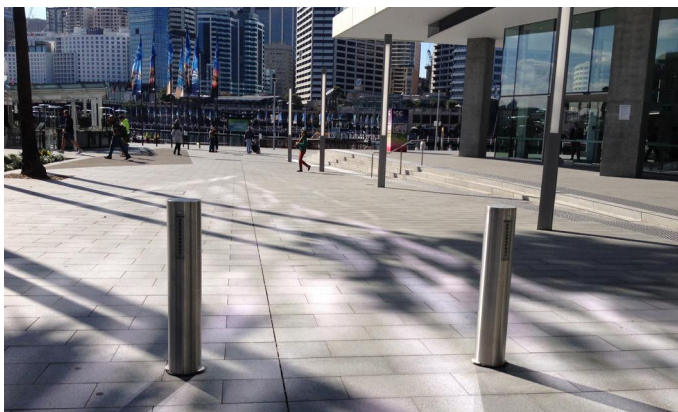
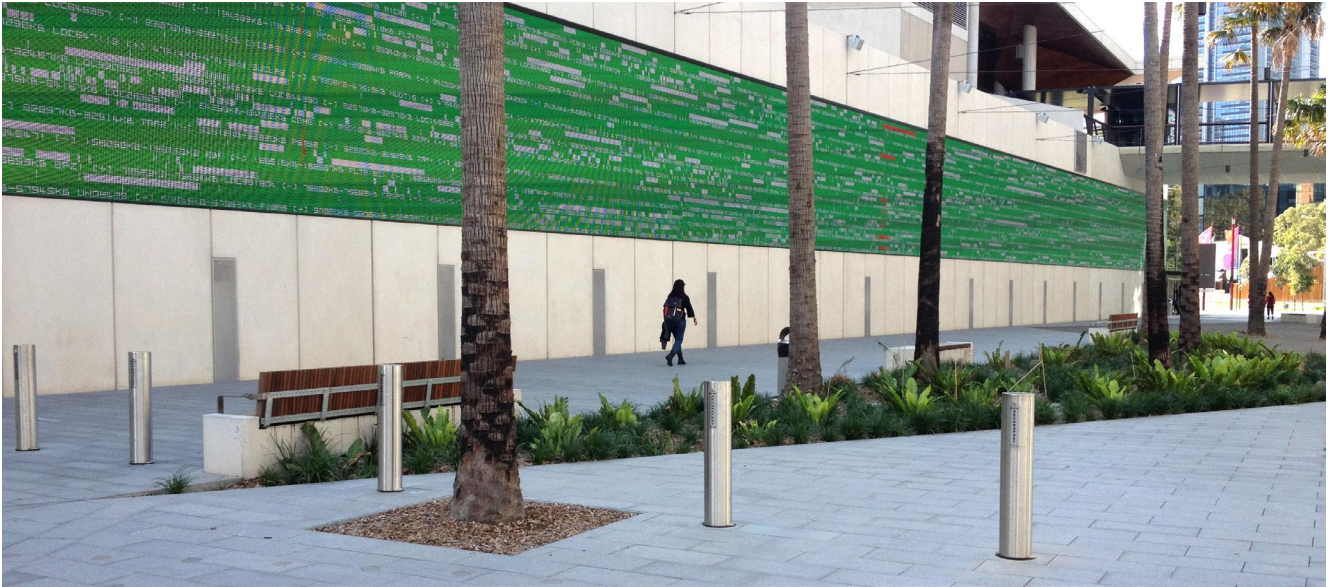
Finished Job

Sydney Harbour Foreshore

Stone Will Landscaping approached Leda to assist in installing security bollards, to a number of sites managed by Sydney Harbour Foreshore Authority. With the recent completion of the Sydney International Convention and Exhibition Centre Leda Security provided an initial order of 25 x SSP150RA bollards and sleeves

BOLLARDS

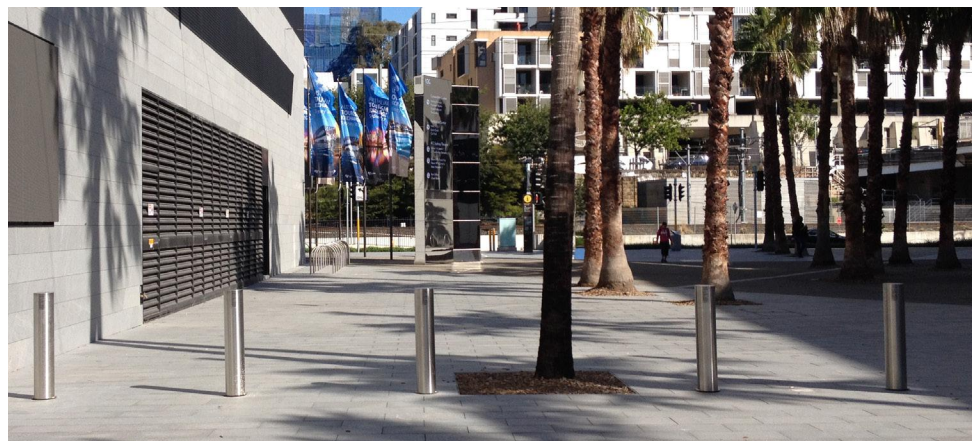
for Stone Will to install along with several pedestrian barriers.



Having delivered the initial order to the client, discussion around the upcoming Vivid festival led to a determination that additional bollards were urgently required to protect against vehicular traffic entering Darling Harbour.

Leda worked closely with the client and Property NSW to assure delivery of 9 additional bollards to be installed before the festival commenced.

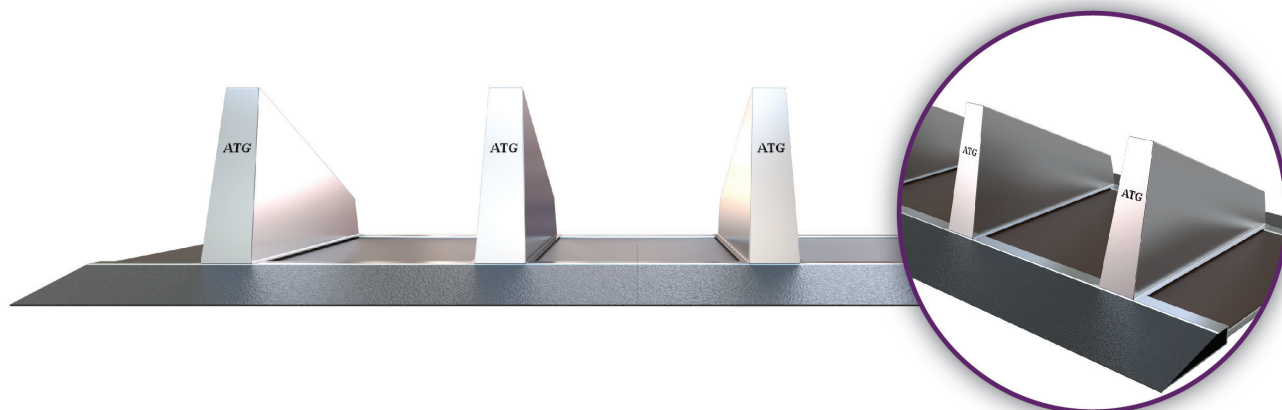
Working proactively with LEDA's production team, the bollards were manufactured and delivered by the required date and installed prior to the festival, ensuring that the site was secured against illegal intrusion.



BOLLARDS

The Surface Guard

LEDA recently featured this new **Event Protection Barrier from ATG** at Security Expo 2017 which was held at Sydney's new Conference and Exhibition centre at Darling Harbour in late July.



It was timely as the product had only days before been successfully impact tested in the UK and achieved an IWA-14 rating of **2500kg @48kmh**.

As a result we had enormous interest in the product from numerous authorities and security integrators.

Protecting Pedestrians

Bollards are often installed as a method of separating and protecting pedestrians from motor vehicles.

The LEDA installation team recently completed a project in Wollongong NSW.

This row of our **Regal Stainless Steel Bollards** provides a much safer precinct for pedestrians.



Stainless Steel Bollard Maintenance

There is often the misconception that ***Stainless Steel is Maintenance*** free, while a wonderful and attractive material we recommend our stainless steel bollards be cleaned 2-3 times a year to maintain them in pristine condition.

Before - Pics Showing Tea Stain in Bollards



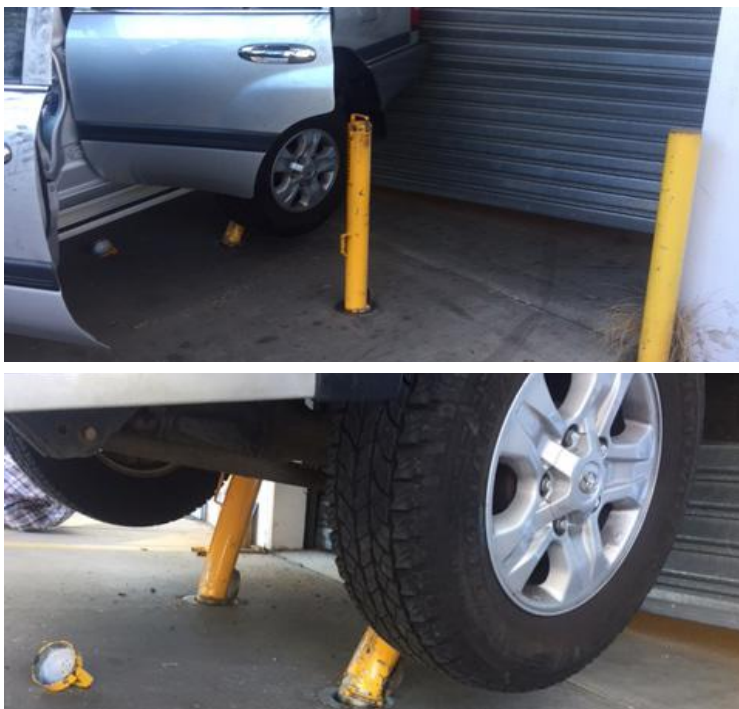
Leda's technicians were able to restore their bollards back to their original finish.

BOLLARDS

There is also an increased possibility of tea staining occurring in marine or hostile environments making the case for regular cleaning and or the application of a protective coating.

This client located in Seaforth, Sydney (a coastal suburb) was concerned that their bollards were discolouring.

After - Restoring Back to their Original Finish



Securapost Wins Again

An attempted Ram Raid at the Officeworks Store at Strathpine Queensland was thwarted by our "XP" Securapost Bollards.

In this instance the ram raid vehicle is impaled and immobilised as they are designed to do.

Leda is proud to be a National Supplier to "Officeworks" in Australia.

BIKE PARKING

Bike Parking for Bush School

Bright P-12 College is a public school situated in north eastern Victoria. It has recently undergone a multi-million upgrade involving some dramatic changes and improvements.

Leda's designers worked with the school to develop a bicycle parking layout plan which would best utilise a newly erected covered area.



Attractive Stainless Steel Designs

These three bike rack designs are part of the attractive **Geo Rack Range** designed by Rowen Wagner design.

Leda assisted Rowen initially when his design was one of the winners of the **Bike Racks as Art Design Competition** hosted by Sydney's Powerhouse Museum and the Roads and Traffic Authority of NSW. Leda originally manufactured the prototype units and later added them into the Securabike product range.



The school settled on Leda's CBR4SC bike rack system which are a very effective means of maximising the number of bicycles (48) that can be parked.

Note also, the orientation of these racks can be angled to suit the manoeuvring areas available.

Economical Bike Shelters

In yet another school project, this time in inner Eastern Melbourne where we installed two of our economical BSS06 shelters and a series of galvanised CBR4SC bike racks.

In this case undercover weather protection was provided for 16 bicycles.



New Vertical Bike Rack

Leda have recently added this innovative new ***Velowup Bike Rack from Europe*** to the Securabike Range.



Assisted Lift Vertical Bike Rack

The unique bicycle lift mechanism ensures you can park your bicycle vertically without any effort. The ***Velowup*** vertical rack is easy to use and provides space saving of up to 40% over alternative products.

A video showing how easy and simple to use can be viewed (<https://www.youtube.com/watch?v=oJwyZUfE7W0>) or visit our Securabike website for details.



The facility included the installation of 21 of our popular CBR4SC bike racks and BBR501 bike repair station.

Perth Office EOJ

Leda's Western Australian office recently completed a medium sized End of Journey bicycle facility at Cannington for FDC Constructions (the builder) and the end client ***Charter Hall Direct Property Management Ltd.***



BIKE PARKING

Clyde Bike Cage

A W Edwards were the Principal Contractor for the construction of the Sydney Trains Central Hub project and subcontracted LEDA to supply and install a secure bike parking enclosure.

The project brief was to provide Securabike parking for space up to 40 cyclists in a weatherproof cage, weld mesh modular panels and access door with pin code entry, free to exit door hardware as well as internal solar lighting.

LEDA designed and manufactured a fully roofed structure based on our UBC03 design, incorporating a wide centre aisle and CBR4SC compact racks fitted to opposing sides of the 7m x 5.4m enclosure.



Because the site did not have mains power to the cage area a lithium battery powered multi pin code door lock was fitted and meant that each bike user was provided with their own personal user code of access.



Securabike Chile

Our *Securabike* distributor in Chile recently forwarded this picture of a bicycle parking project in Santiago for a Food and Agriculture Organisation.

They had completed this project using our popular *CBR4SC galvanised bike racks*.



Hydraulic Lift Tables

Our South Australian office just supplied and installed two hydraulic lift tables for the new Harvey Norman store in the northern suburbs of Adelaide.



There were a number of challenges with this project due to intrusion of foundations in one of the pits, and reduced room on one side of the dock where the hoist needed to go up against a wall. Our techs worked through this and with the support of our design team in the factory had a successful installation. Leda supply and install a range of lift tables ranging from single column through to the largest four column units.

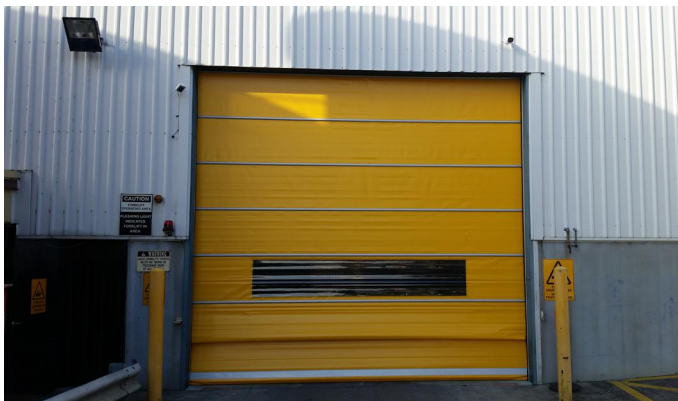
DOCKS & DOORS



High Speed Doors

Did you know that Leda supply and install a large range of flexible high speed roll up and fold up rapid doors.

These can be operated by a range of triggers from PIR sensors, transmitter devices and induction loops. This project was installed recently in a distribution centre where high usage and speed is required.



Hong Kong Doors

Leda has been selected to engineer 18 bifold doors for Ocean Park in Hong Kong. These glazed doors are custom built for winds in excess of 260km/h and also designed to integrate into the buildings fire system.

Leda is one of a few companies globally that has the experience and engineering expertise to design such doors.



GATES

City of Casey

Leda's Victorian installation team recently installed another large cantilever gate system complete with pedestrian access into a works depot at an eastern suburbs municipal council.

This is one of the two gates on this site that needs to serve an extremely busy car park where security is optimum.



To the Rescue

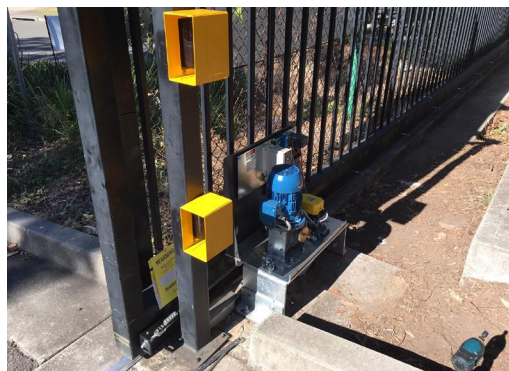
Leda's expertise in problem solving was called upon again to help a new client resolve a long standing problem with an industrial gate install on their site 2 years ago.

The track sliding gate was operating intermittently caused primarily by the gate's track corridor concrete footing not set on a level plane. The fitting of permanent tooth racks at incorrect heights strained the motor. In addition the pre-

existing motor used was underpowered due to the incline of the slope where the gate was located.

"The client has indicated that they had used 3 separate gate contractors in an attempt to diagnose and fix the problem but none able to successfully address this. They finally contacted us after another Leda client made a recommendation following us resolving the previous client's gate and bollard problems" indicated Heng Jiang Cheng, Leda's Technical Manager.

Leda's technical team was able to recognize the problem and recommended a suitable solution involving the use of a different type of gate motor and different track wheel sizes.



Miti Gate - CSG 10900 Series

The CSG10900 Series Miti-Gate has been developed and designed as an alternative, economical PAS 68 crash rated manual barrier

GATES



for locations that have infrequent vehicular throughput, yet still require protection from a vehicle borne threat.

This product requires minimal civil work due to hinge and receptor posts only requiring 215mm foundation depth. With clear width availability of up to 10m utilising a double

leaf format, the Miti Gate is by far the most cost effective, simple, PAS 68 compliant solution currently available. This range will continue to evolve as further applications require an innovative, low visual impact, competitively priced crash tested barrier. The Miti Gate lends itself to any site location where a vehicle borne threat exists, infrequent vehicular access is required and pedestrian permeability is to be maintained. This manual barrier that can be hinged, bi-parting or removable offers the client a variety of options.



Crash Testing

Model 10930 crash tested to 7,500kg (7.5 Tonne)
@ 48km/h (30mph)

Test rating: PAS 68: 2010 V/7500[N2]/48/90:2.5/0.0
(2 leaf), tested at 10.8m*

Model 10940 crash tested to 7,500kg (7.5 Tonne)
@ 64km/h (40mph)

Test rating: PAS 68:2010 V/7500[N2]/64/90:3.0/0.0,
tested at 8.8m*

* V/test weight [vehicle class]/speed [kmh]/angle:
penetration/dispersion).

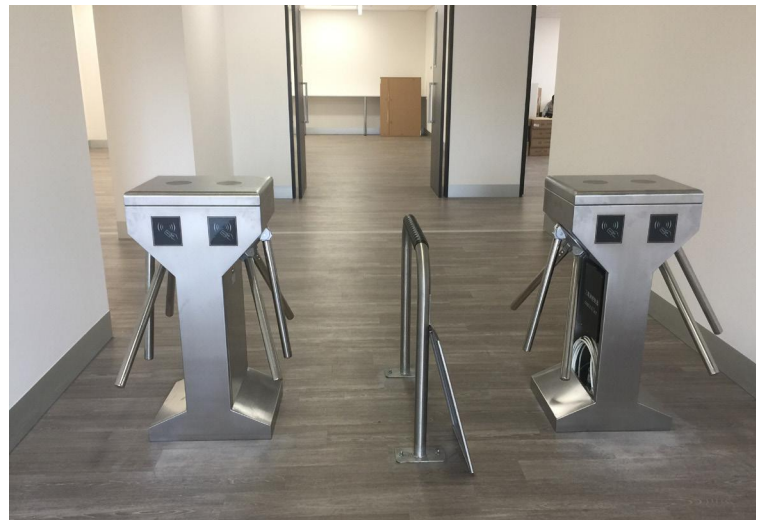


GATES

Pedestrian Turnstiles

Leda's Sydney office was contracted to provide an access control system for the new **Hello Fresh** distribution centre in Wetherill Park.

The client selected two of Leda's SST-1011 **Dual Vertical Tripod Stainless Steel** turnstiles to provide a four lane controlled pathway through their foyer.



Leda's engineers and electrical technicians worked closely with the client and builder to deliver and install the turnstile solution on time and in budget. The arms drop on power failure for fire safety.

Large Gates to Darwin

Our Queensland office recently negotiated a substantial **Vehicle Access Control** contract which included the manufacture, supply and installation of three very large gates and six boom gates to Darwin.

The largest of the gates required a 16.6 metre clear opening which provided us with a number of engineering challenges and was transported to the Northern Territory in two pieces. Being located in a cyclone prone location as Darwin, Leda's engineers needed to redesign our normal concrete footings to cater for the higher wind loading requirements.

Cantilever Gate for Anglican Carpark

The LEDA's Victorian team recently upgraded the perimeter security of the secondary carpark belonging to the historic Christ Church in Brunswick.

Following vandalism and theft the church decided to fully fence in the carpark and Leda were engaged to supply a strong four metre width cantilever gate, together with a perimeter fence with barbed wire top.



SecurAccess

LEDA has recently shipped a multiple order of turnstiles fitted in containers to an overseas mining site from our WA branch.

With the use of modified 20ft sea container, our team

GATES



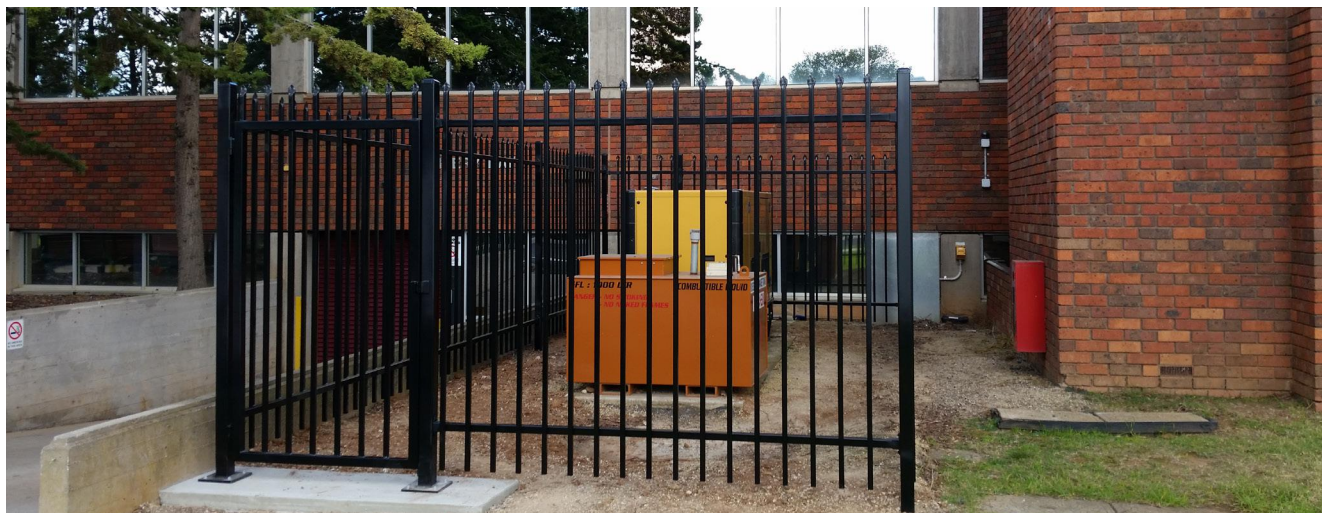
has integrated two full height turnstile, internal fencing, emergency evacuation pedestrian gate with a lockwood panic bar fitted as well as an independent solar power system, running motion lighting, access control and wireless data transferring equipment.

Once the worker completes the inductions and has provided the required credentials to access site, the customer can then download the user's details through a wireless ubiquity link that connects the software to the door controller up to 15km in line of sight. This enables the customer to manage all inducted site workers from one central location.

Need a Compound

Using our **Modular Premier Fencing Panels** it's an easy task.

On this project for Wyndham Council in Victoria we were quickly able to encase the equipment enclosure and provide a pedestrian gate for access.



GATES

Modular Gate Breakthrough

The new Modular Track and Cantilever Gates are a major breakthrough in gate design and will revolutionise the industrial gate market across Australia.

Developed and tested by LEDA's Engineering team over 2 years the LEDA Modular Gates use two standard dimension panels to achieve a range of clear opening gate widths.

They can be supplied in kit form for DIY installation or delivered fully assembled.

Most importantly long lead times are reduced as all Leda branches will be carrying the components necessary to supply your gate in a matter of a few days rather than weeks.



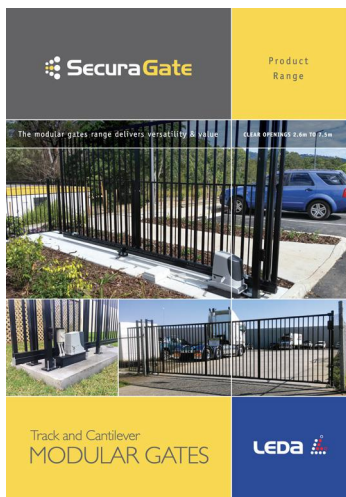
Modular Track Gate

Precast concrete footings for the Modular Cantilever Gates eliminate the need for on-site forming and concreting providing potential cost savings of thousands of dollars as well as quicker and more cost effective installation for each project.

A range of operating options including Solar Power complete this major gate breakthrough.



Modular Cantilever Gate



Hard copies of our "Modular Gates Brochure" are now available at your nearest Sales office.

A copy of it can be downloaded from downloads section of LEDA site.

Visit www.ledasecurity.com.au

STAFF NEWS

Golden Bollard Trophy

*Stewart Miller, Leda's NSW State Manager was the recipient of this year's **Golden Bollard** award.*

The trophy was awarded to Stewart by Leda's Managing Director in recognition of achieving the highest Sales Revenue of any sales employee in Leda during the 2016-2017 financial year.



From left to right **David Matthews & Stewart Miller**

Returning Staff at Tuggerah

While it was always disappointing when experienced long serving employees leave for one reason or another, it is equally rewarding if and when they decide to return.

Leda's manufacturing factory was pleased to recently welcome back: Paul Buonaventura, who heads up our Warehouse / Despatch department.

Partrick Martorana, taking charge of our Robot welding and plasma cutting. Todd Haydon, who heads up our afternoon shift. In addition we welcome back Jordan Russell, Jake Smith and Alex Miller to our manufacturing team.



From left to right **Paul, Todd & Patrick**

Security Expo 2017

This year's Security Conference and Expo returned to Sydney (26-28th July) and was held for the first time in Sydney's new Conference and Exhibition Centre at Darling Harbour.

After residing in Melbourne for the past three years it was great to have *ASIAL's Security 2017* back in Sydney.

Our two new *Surface Mounted Barrier* systems created enormous interest and enquiry which kept our Leda staff extremely busy for the three days of the Expo.



MESSAGE FROM THE MANAGING DIRECTOR



With us already well into the second half of 2017 I can report that it is a year where Leda is needing to respond to many market driven changes and challenges, **especially the need to better secure our cities against 'hostile vehicle attack' in its various forms, or in security parlance - 'hostile vehicle mitigation' (HVM).**

Most of our major cities are under pressure to make their CBD pedestrian areas safer by preventing the potential threats brought about by the illegal ingress of motor vehicles. This has led to the installation of large ugly concrete barriers and bollards as a stop gap and temporary measure in both Sydney and Melbourne.

While Leda staff experienced in supplying and installing Hostile Vehicle Mitigation (HVM) equipment have been providing advice and consulting services to various State and Local Governments there has also been numerous requests for us to provide more aesthetically attractive solutions such as Street Furniture options rather than simply installing row after row of bollards.

Using several of our existing Precast Concrete Products our Engineering Department have been investigating their functionality as street furniture seating while at the same time improving their *Impact Resistance*. We are also completing plans and drawings on how they can be used and installed.

In addition we have negotiated an agreement with a leading UK company to gain access to their impressive range of PAS68 and IWA-14 certified Street Furniture products. This comprehensive range, includes planter boxes and various seating designs that have been physically tested and certified. We also mentioned in this newsletter the recent launch of two new *Surface Mounted Barrier Systems* which are capable of being installed temporarily for special events. There is also a version for permanent or semi-permanent use. All models are designed for quick installation, without the need for special concrete footings. As an Australian owned company, Leda management and employees are committed to adapting and responding in helping to protect our wonderful country.

David R. Matthews

Managing Director

PUBLISHED BY: Leda Security Products Pty Ltd ABN 23 067 258 235

Head Office

Design, Engineering,
Manufacturing and
Accounts
18 Reliance Drive,
Tuggerah NSW 2259
Tel: (02) 8413 3430
Fax: (02) 4353 2255

National Sales

1300 780 450



Sales Offices

New South Wales

8/185 Briens Road,
Northmead, NSW 2152
Tel: (02) 8413 3410
Fax: (02) 8677 7119

Queensland

2/387 Lytton Road
Morningside, QLD 4170
Tel: (07) 3613 8270
Fax (07) 3399 5688

Victoria

2/89 Enterprise Way
Sunshine West VIC 3020
Tel: (03) 8399 8150
Fax: (03) 9315 1085

South Australia

1/5 Tooronga Ave
Edwardstown, SA 5039
Tel: (08) 8374 3266
Fax: (08) 8374 3299

Western Australia

1/27 Century Road
Malaga WA 6090
Tel: (08) 6430 1670
Fax (08) 9209 2860