

NOV 2017 **NEWSLETTER**

perimeter

SECURITY PRODUCT NEWS



Protecting Public Spaces



2

STREET FURNITURE

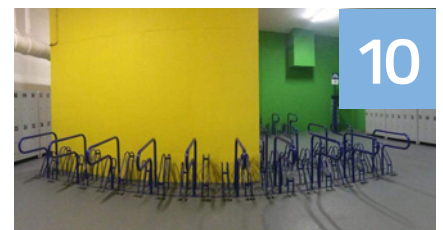
Palace Nova Cinema, In a Dairy, Shallow Mount Bollard, The Cubes, Perth Stadium Protecting Public Spaces, Burnside Village



7

GATES & TURNSTILES

The Complete Package, Gate to No Where, Norwood Pool, Where's the Gate, Mitigate, A Tall Gate, Australian Institute of Sport



10

BIKE PARKING

Bike Rails for NSW School, Bike Racks for Victorian School, Vertical Bike Racks, Repair Station for Bikeways, Bike Parking for NZ & Chile, USA Bike Room & Shelter



15

OTHER PROJECTS

Guardian Road Blocker, LEDA's Advice and Design

STAFF NEWS

Service & Install Award, Tech Savvy, LEDA Recycles



ASIAL 2017 Best Product Award - WINNER



A Tall Gate



Bike Room

BOLLARDS

Palace Nova Cinema

A new Art Deco Cinema complex has recently been built on Prospect Road in Adelaide. Drawing memories from an early 20th century Art Deco style with classic finishes. Our South Australian office has successfully completed installing a number of our impact rated stainless steel bollards to protect the front perimeter.



Installed Pic



Installation in Progress

The bollards have been installed in a straight footing located behind the kerb to prevent vehicular intrusion.

In a Dairy

As everyone knows bollards traditionally are used to stop or prevent vehicle ingress, but not so here.

LEDA's *Warden* removable bollards were installed in a regional Victorian dairy. The ingenious bollard design allows the user to slide the base of the bollard and lock it into a base assembly. The bollards can easily be removed when loading or unloading is required.



Shallow Mounted Bollard Technology for Inner City

LEDA's shallow mount bollard systems are enabling inner city councils and other government organisations throughout Australia to use HVM bollards.

This new technology, pioneered by LEDA in Australia, allows those needing high impact bollards to use them even when deep footings cannot be used. This in turn facilitates the meeting of new *Federal Government Guidelines for the Protection of Mass Gatherings in Public Spaces*.

LEDA manufacture and import a wide range of HVM products, including IWA14 tested and rated bollards and temporary street barrier systems.



Shallow Mount Installation

Precast Concrete Cubes

Our precast concrete log and cubes were originally designed as street furniture products however when upgraded with internal high impact steel bollards they are anchored very strongly into the ground and therefore have greatly improved **vehicle resistance** strength.

LEDA's Victorian office installed our "cube" precast concrete bollards into a street that will be blocked off for pedestrian use by City of Yarra.



There is a possibility that Yarra council may commission an artist to paint illustrations on them to fit in with the surrounding area.



PROTECTING PUBLIC SPACES

Protecting Public Spaces

As the world reacts to the growing threat of motor vehicles being used in terrorist attacks Local and State Governments are currently tasked with how best to protect people in public spaces.

A new alternative is currently being suggested from Security Agencies in the UK is to take a more simple approach by **Stopping Vehicles Gaining Entry**. This can be achieved by retrofitting aesthetically attractive surface mounted Street Furniture Products into the areas to be protected.



There are however specific requirements in adopting this approach:

- All products used need to be connected to the pavement by shear keys
- No openings more than 1.2m wide
- Easy for pedestrians to navigate
- Aesthetically attractive
- Allow service vehicle access

Most importantly LEDA's designs incorporate a **Unique Keying System** that allows these products to be installed efficiently and inexpensively using core drilling installation methods LEDA previously developed for Bollard installs. This allows areas to be deployed and secured quickly without major disruption to the site.

LEDA Security Products have been Australia's leading supplier of Perimeter Security and Hostile Vehicle Mitigation products for over 20 years, recently released a new range of Street Furniture Security products the nucleus of which are a precast concrete **Log and Cube**. They are available in a number of attractive finishes, can also be fitted out as seating making them multifunctional.

While we mentioned that LEDA had developed a new selection of products to protect Public spaces we can now advise that printed hard copy version is now available. To receive a copy simply contact your closest LEDA sales office at sales@ledasecurity.com.au



LEDA Wins ASIAL 2017 Best New Product Award

The Australian Security Industry awarded LEDA with **Product of the year - Physical Security** at the ASIAL Security awards held in Melbourne on the 19th October.



A finalist on several other occasions it was extremely rewarding to win this year with our **Surface mounted Barrier systems**. One of the systems was the new **Surface Guard**, a rapidly deployable modular system designed to provide temporary protection at crowded places and venues from vehicle ramming attacks.

The Surface Guard

Surface Guard has been designed to provide temporary security for events, functions and public gatherings. **It is IWA14 impact tested stopping 2500kg vehicle travelling at 48kmph.**

It is light in weight and can be supplied flat pack making it easy to transport. It can be easily anchored around street furniture items such as bollards. It can be configured allowing pedestrians to pass over these with ease.



From left to right Tom Rozsa & Sandy Capannolo

The award was accepted by LEDA's CEO, Sandy Capannolo and our Victorian Manager Tom Rozsa.



Cyclists Pass Over with Ease



Surface Guard Anchored around Bollard

BOLLARDS

Perth Stadium

LEDA's WA branch has just completed a major contract for Multiplex Constructions, Manufacturing and installing all the Vehicle Access control and HVM Bollards required at the new Perth stadium.



Prior to Concrete Pour



LEDA's contract involved hundreds of our SSP80F fixed and retractable bollards. While many of the bollards were architectural all the roadway entrances required impact rated bollards.

The bollards selected to protect the stadium surrounds were our SMRB150GS semi-automatic retractable bollards.

This model has internal gas strut power assist to raise them and will only need to be raised on days when the stadium is hosting events.

The bollards will normally be left in the lowered position and can be simply and quickly raised by the turn of a handle. All the various LEDA Bollards supplied to the site were in Stainless Steel.

Burnside Village

Burnside Village, Adelaide's luxury shopping centre in Glenside contracted LEDA's South Australian branch to supply and install a number of precast concrete camden bollards as well as log and cubes to protect the shop entrances.



The Complete Package

When Broad Constructions needed a quick solution to securing two vehicle access points on a large building site in Perth they turned to one of the best solutions providers, Luke Newick, LEDA's WA manager.



GATES

Luke commented "LEDA designed, developed and manufactured a complete turn key construction security system for Broad Construction. Inclusive of an automated gate, CCTV, intercom and construction user management software. In providing this, Broad Construction reduced a major fixed cost in static security guards and currently control the entire site with 1 security guard monitoring all access points controlled through an iPhone.

There is no ongoing licensing costs with LEDA's recommended control software and it can be managed remotely from anywhere with 4G network"



Lifting into Position



Final Position

Gate to No Where

That certainly what it looks like. Our Victorian team took the pic when they recently completed the gate install.

Broadlands Estate is high end development in southern Victoria. The project is currently under development and the main entry area is fitted with a LEDA cantilever gate system.

It will operate on a timer and via the GSM network for ease of use. Fencing is yet to be installed in the site.



GATES

Norwood Swimming Pool Turnstile

The city of Norwood Payneham & St Peters needed to control entry of pedestrians into their Norwood swimming pool area.

LEDA's SA branch installed a turnstile and pedestrian gate combo. This will allow disable access and ensure quick egress in case of an emergency.



Australian Institute of Sport

The Institute's Property Manager contacted LEDA NSW sales office for a quote to repair a damaged gate at the Australian Academy of Sport Facility at Narrabeen.

Site inspection and measurements followed with details of the existing frame replicated on shop drawings.

Installation took place with a 65 SHS frame fully engineered concrete foundation and new magnetic lock fitted to the gate.



Where's the Gate

Our Victorian team needed to build and install a very long track gate on a level crossing upgrade project which is part of a major strategy for the Victorian Government.

The timing metrics to get the gate designed and installed was very tight but our factory and install team pulled out all stops to ensure it was completed on time.



Hidden behind signage is LEDA Track Gate (17m)

Dual Leaf Mitigate

In our last newsletter we featured a single sided Cova Miti swing gate. In this picture we have a double sided swing gate about to leave the factory.

What I would like to draw your attention to is the shallow depth of the footings. **PAS68 rating of 7500kg at 48km/h.**

GATES

This two leaf model can be manufactured to accommodate widths up to 10.8m.



A Very Tall Gate

One of LEDA's great strengths is the ability to design, engineer and fabricate high Security Gate Solutions. We are often called on to stretch the boundaries with regard to the length of gates however in this case it's the height.

At 5.5 metres we consider this to be a very high gate. Destined to be exported to Papua New Guinea it was necessary to fabricate the Gate in three sections which can be bolted together once on site. Pictured are one of the four leaves required in this Dual sided Bi-parting gate. Once our production and electrical teams have completed testing the gate will be dismantled, sent for hot dip galvanising before being containerised for shipping.



BIKE PARKING

Bike Rails for NSW School

LEDA's BR11 Bicycle rails are increasingly being installed at NSW public schools. The reason they are so popular is due to the wrap around plastic sleeves that provide protection to bicycles from metal on metal contact.



The products are available in Hot dipped galvanised mild steel or stainless steel.

Bike rails pictured were recently installed by LEDA installers at Wyong, Gorokan and Terrigal high schools (on the NSW Central coast).

Bike Racks for Victorian School

Our CBR4SC bike racks have been installed at Langwarrin Primary School in Victoria. Once again note the wrap around protection on the leaning rails which is unique to our Securabike products.



BIKE PARKING

Repair Station for Bikeways

Brisbane City Council promote the use of bicycles in the city and have invested in an extensive network of bikeways and shared pathways across the city that connect to schools, local facilities, parks and public transport hubs.

The BBC bike scheme involves an informative webpage for riders to plan journeys, be informed about maintenance and closures of bikeways and the introduction of bicycle repair hubs located at strategic points

LEDA Security and Brisbane City Council have partnered together for end of trip facilities, bicycle lanes and bicycle repair stations for this evolving project



Vertical Bike Racks

Cleverdick Services sent us this Picture of an installation they had recently completed using our BR542 Dual racks.

What impressed us was the way they had installed aluminium stripping in line with the bicycles back wheels to protect the walls. The end client must have also been happy as we have since received further orders.



BIKE PARKING NZ & CHILE

New Facility for Auckland Transport

Our New Zealand distributor **CAM** recently completed installing a new End of Journey Bicycle Parking facility for Auckland Transport who had relocated to new premises at Viaduct Harbour in Auckland.

The project involved supplying and installing 57 of our BR11 Rails (for horizontal) parking and 26 of the BR2101 racks (for vertical parking).



End of Journey facility in Chile

Securabike bike racks, clothes lockers and repair station were installed in Chile for residents of the Sara Del Campo building.

It includes parking for 88 bicycles allowing residents to park prominently. The racks are powder coated to suit the colour of parking space. The facility also includes a bicycle repair station and 88 lockers so that residents can leave some of their gloves, backpacks, helmets and other valuable items.



End of Journey Facility, NZ



End of Journey Facility, Chile

Bike Room

Our USA distributor Duo-Gard has sent us some very nice comments & interesting pictures, supplied by Self-Help Credit Union and Sustainability Fund, of a Bike Room they had recently opened.



We had the 'Grand Opening' of our bike room today. Over 50 of our staffs came to see the space, sign up to use the shared bikes, see the repair station in action, and get the scoop on the treadmill.

Thanks for your assistance selecting the best racks for the space and working out the shipping details, said Melissa Malkin-Weber, Sustainability Director.



Securabike vertical bike racks (BR2101) and repair station line up along the walls. The murals in the walls are lively and colourful that takes shelter from functional to fun.

Commuters coming to work tell us they love it. And no wonder 13' x 25' structure combines aesthetics, security and convenience for the growing number of transit passengers who relish the advantages of biking.

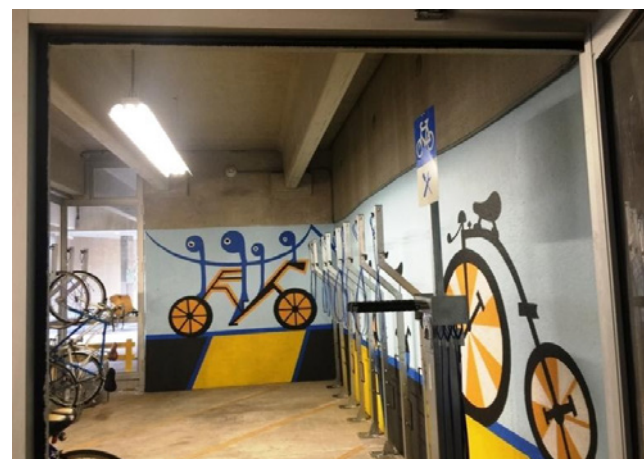
BIKE PARKING USA



Commuting to Work Takes a Turn

Do you see bicycle shelters as drab, uninspiring, utilitarian structures? Then you haven't seen the one in the Bloomfield NJ train station.

Commuters who bike to this station park in a custom Duo-Gard (Securabike US Distributor) Bike Safe shelter located on the first floor of the parking garage.



STAFF NEWS

Tech Savvy

I am often amazed at the ingenuity of some of our technical staff when they have to fix a problem and draw on their experience to find a solution.

Our service technicians are often called on to replace worn gate bearings. They are often on their own and need to lift heavy gates so they can get to the bearings. Often it is not possible to use a car jack or other lifting equipment.

Tony Hudson in our SA branch designed and built this gate lifter which we expect will be adopted by other LEDA service technicians.



Gate Lifter



LEDA Recycles

The fact that our local council was unable to assist industrial rate payers like ourselves with recycling bins did not deter our Purchasing Manager Stephen Cook.

Special thanks to Stephen Cook who has organised "Veolia" to provide bins for recycling and general waste.

Service & Install Award

This is the 9th year that this award has been presented and is in recognition to the state branch office with the **Highest GP for Service and Installation.**

Once again the trophy has been won by the Queensland team, which is the second year in a row.

David Matthews, LEDA's Managing Director is pictured presenting the award to Greg St. Baker, State Manager QLD, during our September Management Conference at Tuggerah Head office.



From left to right David Matthews & Greg St Baker

The perpetual trophy will be on display at our Morningside Queensland office for the next 12 months.

Guardian Road Blocker

Installing Road blockers even on a level site requires significant planning by our Project Managers.

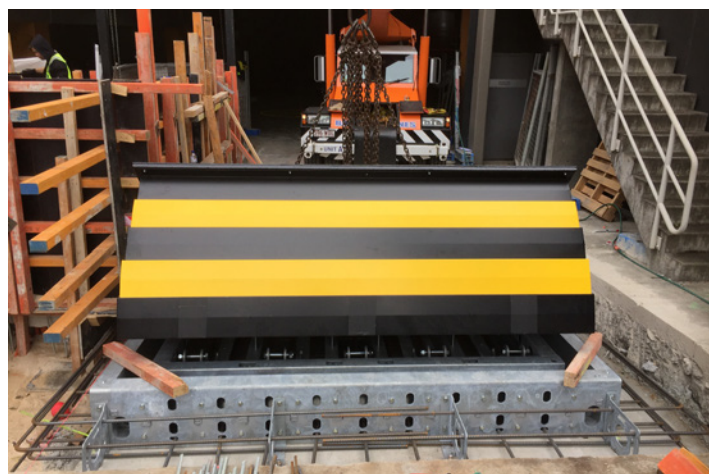
The task is made much more difficult on a ramp as was the case for our NSW team when needing to install two blockers at a Sydney Police Station.



OTHER PROJECTS

The Guardian Road Blockers supplied have been impact tested receiving a IWA 14-1 rating V7200(N2a)/80/90:0.4 and incorporate significant innovative and technical improvements. The top cover plate is of a sandwich board construction that includes advanced engineering polymers that provide improved energy absorption.

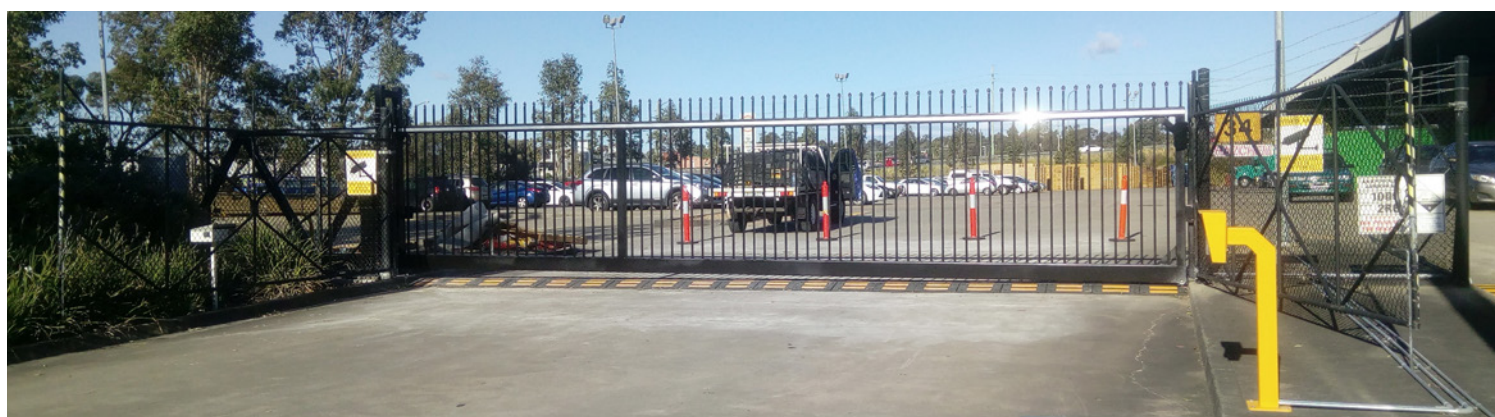
This provides "The Guardian with a longer service life than other Road Blockers which notoriously have a quite short life span of 6-8 years.



Advice and Design

Following an internal security review of the property the client contacted LEDA for advice which led to us manufacturing a large cantilever sliding gate for them.

An assessment of site levels was made and an appropriate solution was made by LEDA Design team. Engineered concrete footings were poured after which the gate was commissioned by LEDA's installation team.



MESSAGE FROM THE CEO



I am thrilled to be part of Leda and it gives me great pleasure to take the reins from Mr. David Matthews as Leda's new CEO. David has done a wonderful job developing a very successful business and I look forward to filling his shoes to build on his 24 years of success and keeping ahead of the game in securing our cities and people against hostile vehicle attacks to make Australia a safer place.

Since joining Leda several months ago, I have spent the time understanding the business, visiting all our state operations and facilities, and personally saying hi to all staff. It has been a steep learning curve and a very rewarding one but I still have lots to learn and do. I must say Leda has a team of very experienced, knowledgeable, passionate and caring individuals that are proud of what they do and who are committed to provide better security products and services to all Leda's current and future customers. We even have a large number of "return employees" who came back to Leda after working elsewhere - this speaks volumes about the company and its values.

It has also been a very exciting time as we achieved strong sales across all states and obtained several very large wins through for some very notable national customers and Government departments. This looks to be continuing through to Christmas and well into 2018. Over the next month we are also on track to complete several major high profile projects in Sydney, Melbourne and Perth. To top things off, I was even honoured to attend and receive the "ASIAL 2017 Product of the Year Award" for Leda's new and highly innovative portable Surface Mounted Barrier Solutions - Surface Guard and Surface Bollard. This innovative solution along with our SecurAccess range of solutions is looking to be a big winner in 2018.

Moving forward, my focus will be on improving what we do and how we do it to deliver the best most economical solution to our customers and follow that up with exceptional customer service and ongoing maintenance services. There are several operational, sales and customer service initiatives I have already instigated and hopefully you will start to see the improvements flowing through. I also intend to increase the level of awareness on how we combat and reduce the risk of hostile attacks on our Australian citizens across Government, councils and Industry events by contribution to panel discussions and the education of key decision makers.

Sandy Capannolo

Chief Executive Officer

PUBLISHED BY: Leda Security Products Pty Ltd ABN 23 067 258 235

Head Office

Design, Engineering,
Manufacturing and
Accounts
18 Reliance Drive,
Tuggerah NSW 2259
Tel: (02) 8413 3430
Fax: (02) 4353 2255

National Sales

1300 780 450



Sales Offices

New South Wales

8/185 Briens Road,
Northmead, NSW 2152
Tel: (02) 8413 3410
Fax: (02) 8677 7119

Queensland

2/387 Lytton Road
Morningside, QLD 4170
Tel: (07) 3613 8270
Fax (07) 3399 5688

Victoria

2/89 Enterprise Way
Sunshine West VIC 3020
Tel: (03) 8399 8150
Fax: (03) 9315 1085

South Australia

1/5 Tooronga Ave
Edwardstown, SA 5039
Tel: (08) 8374 3266
Fax: (08) 8374 3299

Western Australia

1/27 Century Road
Malaga WA 6090
Tel: (08) 6430 1670
Fax (08) 9209 2860