

FEB 2018 **NEWSLETTER**

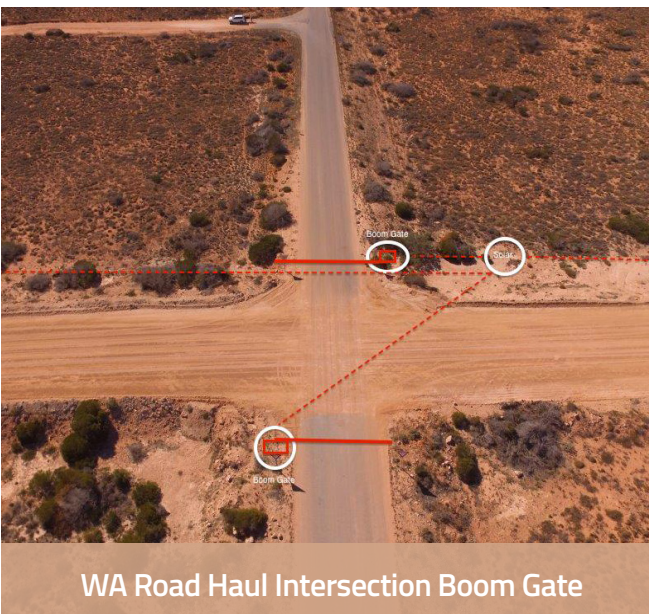
perimeter

SECURITY PRODUCT NEWS

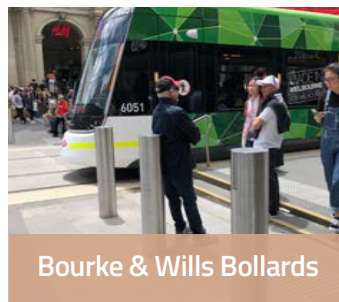
MARTIN PLACE SYDNEY



Concrete Colossus Bollards



WA Road Haul Intersection Boom Gate



Bourke & Wills Bollards



Karalee School Shelter

2



BOLLARDS

Ropes Crossing, Brisbane Airport, Bourke & Wills, TMC Bollards, PAS68 Bollards Stock, Titan 600, Bunnings Bollards

6



STREET FURNITURE

City of Sydney Trial, Hornsby Shopping Centre, Martin Place Sydney Colossus Bollards, The Surface Guard System

9



GATES & FENCING

Rio Tinto Road Haul Boom Intersection Gate, Sydney Light Rail Fencing, Adelaide Airport Gate, Cova Mitigate, United Voice

12



BIKE PARKING

University Bike Racks, Bike Shelter, Scooter Racks for School, Bike Cage, EOJ Facility, International Bike Parking

TECHNICAL NEWS

Stainless Steel Upgrade, Shonky Bollard Suppliers, New HVM CPD Presentation

BOLLARDS

Ropes Crossing Shopping Centre

LEDA recently supplied and installed slimline stainless steel fixed bollards at the Ropes Crossing Shopping Centre.



LEDA NSW Sales team advised the client on the appropriate spacing and layout. The bollards are designed for protection of pedestrians, restricted vehicle access and to protect the glass facades.

The manufacture and installation of these bollards went seamlessly and LEDA was able to help the client meet their budget restraints.

Brisbane Airport

LEDA recently supplied a large number of SP90F security bollards for the new Brisbane Airport International drop off area.

TAL Civil managed to install all 91 bollards in just 3 days.



Bourke and Wills Bollards

LEDA Security were recently involved in the security upgrade of the Bourke Street Mall where our **"Bourke and Wills"** security bollards were installed to protect the mall against vehicle borne terrorist attack.

Designed, tested and made in Australia by LEDA, these permanent metal bollards were installed in late November.

To announce the completion of 'Stage 1' Premier Daniel Andrews joined Minister for Police Lisa Neville, acting Police Commissioner Andrew Crisp and Lord Mayor of Melbourne to jointly visit Bourke Street and publicly announce the new security plans for the tourist and shopping hot spot.

LEDA's high impact stainless steel bollards have been installed at the Swanston and Elizabeth Street corners of the mall to help protect against vehicle attacks. The works form part of the Andrews Labour Government's \$10 million CBD security upgrade following January's Bourke Street tragedy. The new bollards have been crash rated and independently assessed to withstand significant vehicle force.



BOLLARDS



Bourke Street Mall is the first of nine initial sites to receive permanent protective barriers, with the remaining locations to be progressively upgraded over the next 12 months. All temporary barriers were removed from Bourke St Mall in December once all the new work was completed.

Additional street furniture to provide along the edges of the tram tracks has been developed by the City of Melbourne, with the assistance of Victoria Police, and ensures that trams, pedestrians, and emergency services vehicles can access the mall. At the announcement the Lord Mayor emphasised the *"need to create comprehensive safe zones to protect people from a hostile vehicle attack. No one can guarantee against attacks but we have been working very hard and very closely with the Victorian Government and Victoria Police since January to do all we can to protect Melbournians and visitors to our city and to keep pedestrians safe."*

BOLLARDS

Transport Management Centre

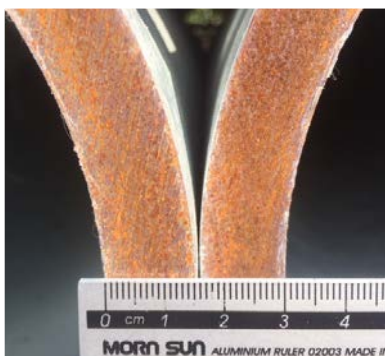
Over 100 specially engineered base plated bollards have been installed by LEDA's Tuggerah based installers at the new NSW Government *Transport Management Centre*.

The 200NB bollards which provide perimeter security to the building are secured to the foundation with 6 x 30mm chemical anchors. There are additional **3 x PAS68 certified automatic retractable bollards** that provide access to the loading bay.



PAS68 Bollards now in Stock

Increased demand for certified PAS68 bollards has allowed LEDA management to make decisions to stock many of these products so that we can react quicker to market demands.



The 200NB bollards pictured have a PAS68 certification and have been impact tested with a 7.5tonne vehicle at 64kmh. They are normally fitted with stainless steel sleeves after installation.

Titan 600 goes Square

Recent shortages of material required to manufacture the round stainless steel version of our Titan 600 power distribution bollard have seen it necessary for our design team to change this model from a round 600mm Diameter to a 600mm square unit.

Sales staff can inform clients about this change and provide new product drawings where required.



Titan 600 in Stainless Steel

Bunnings Bollards Rollout

LEDA was recently appointed to install our Sentinel locking & removable security bollards at 49 **Bunnings Hardware Stores** across NSW and Victoria.



Like many other National retailers LEDA with branches across Australia is the ideal partner for Bunnings to assist with their security upgrade.

LEDA staff can conduct site inspections, recommendation reports and project manage installations across the country.

BOLLARDS

As a part of the program LEDA is to provide Bunnings stores with higher physical protection to vehicular access points such as their roller shutter doors following a number of ram raids.



All our hard work paid off as we are proud to announce that LEDA have been selected and awarded major contracts for:

- *The Supreme Court in Canberra*
- *Adelaide Oval*
- *Victorian Parliament*

Major Contracts Won

The last few months have been a very busy and successful period for LEDA's High Security and major projects team.

Tenders requiring the installation of HVM equipment for a number of high profile sites kept our team very busy lodging extensive tenders submissions.

Each of these high profile sites require the supply and installation of certified and crash rated products.

PROTECTING PUBLIC SPACES

City of Sydney Trial

In a separate story we have mentioned how our **precast concrete Colossus Bollards** have been used to provide physical protection for pedestrians against hostile vehicles down the length of Sydney's famous Martin Place.



Craning into Position

However it is also interesting to mention that conducting trial installations can be important to insuring the project runs smoothly when the actual installation occurs. In this instance Sydney city council employees were able to assess safety aspects, time frames for installing each bollard and design a methodology for the project.



Final Position

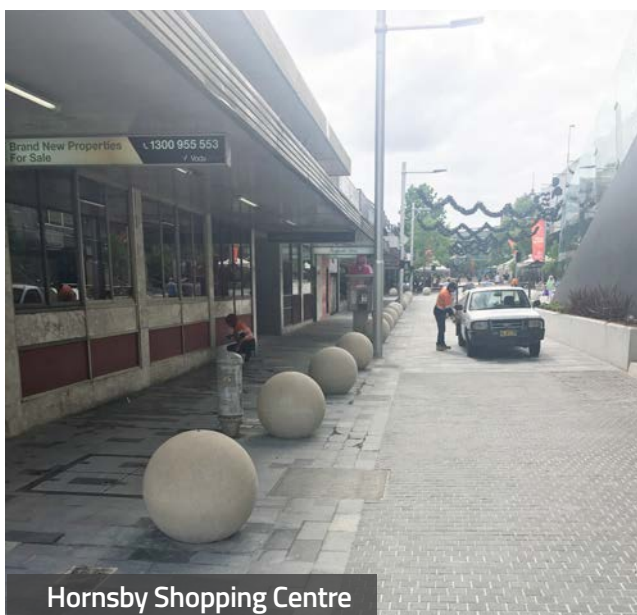
Due to the CBD location the actual installation of the bollards had to be conducted at night so it became even more important. The trial at Sydney City councils Bay St. depot also allowed council staff to choose between the two various colour options of **grey and off-white** that we offer.

Hornsby Shopping Centre

We have had unprecedented demand in Sydney for our **Colossus Bollards** with them also being chosen to provide pedestrian protection at Hornsby Shopping Centre.

Our NSW branch supplied 26 of these large concrete bollards to Fernandez Construction who installed them along Florence Street.

The bollards were once again supplied in off-white with a light sand blasted finish.



Hornsby Shopping Centre

Martin Place Sydney

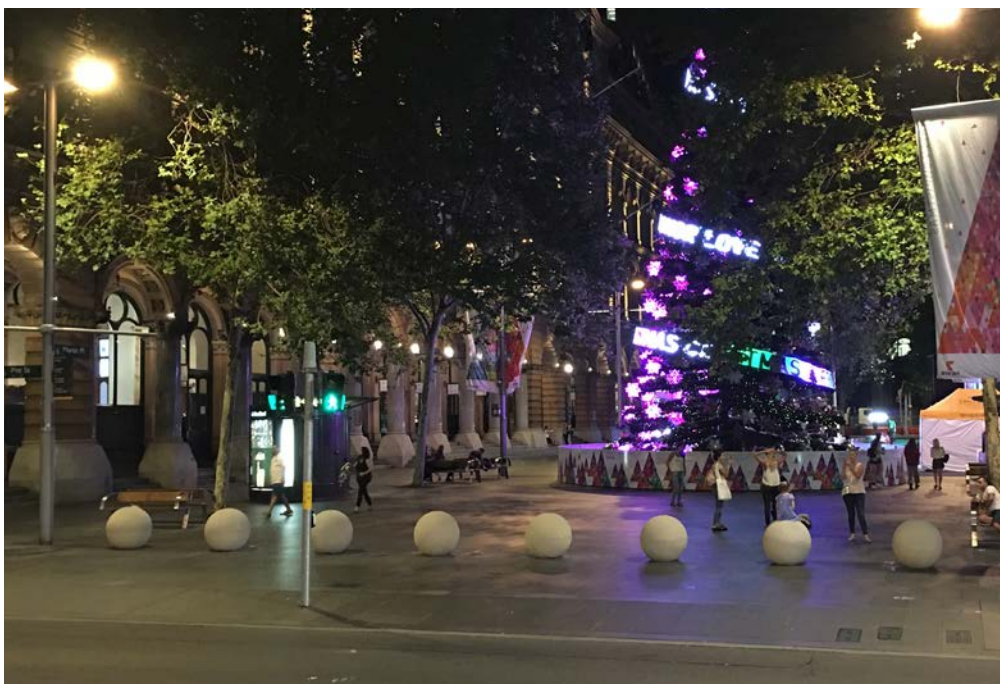
The City of Sydney Council is planning to install six rows of LEDA's Precast Concrete **Colossus Bollards** at various locations down the length of Martin Place.

PROTECTING PUBLIC SPACES



Off White Concrete Colossus Bollards

The first of these permanent installations was completed just before Christmas (2017) as shown above and since then a further three rows have been finished.



This includes a row outside the **Lindt Cafe** the site of Sydney's hostage siege in December 2014 which culminated with the deaths of two hostages and the perpetrator Man Haron Monis.

The colossus bollards are keyed into the pavement with a central pipe support and can be removed with custom designed lifting equipment for special occasions.

PROTECTING PUBLIC SPACES

THE SURFACE GUARD SYSTEM

The innovative Surface Guard system has been designed to provide temporary security for events, festivals, urban squares and VIP visits.



- Rapidly deployed and quick to remove
- Innovative modular design
- Light weight and supplied in flat pack
- Reusable on multiple sites
- High security portable and stackable
- Versatile - For multiple applications
- Copes with road cambers
- Easily anchored around bollards
- Cost effective protection

FOR
TEMPORARY EVENT PROTECTION

IWA I4 TESTED

Security Rating

IWA I4: V/2,500(NIG)/48/90:4.5

IWA I4: V/7,200(N3C)/32/90:4.8

Available in Stock

FROM MARCH 2018

*Contact your nearest LEDA sales office
to BOOK live DEMO today*

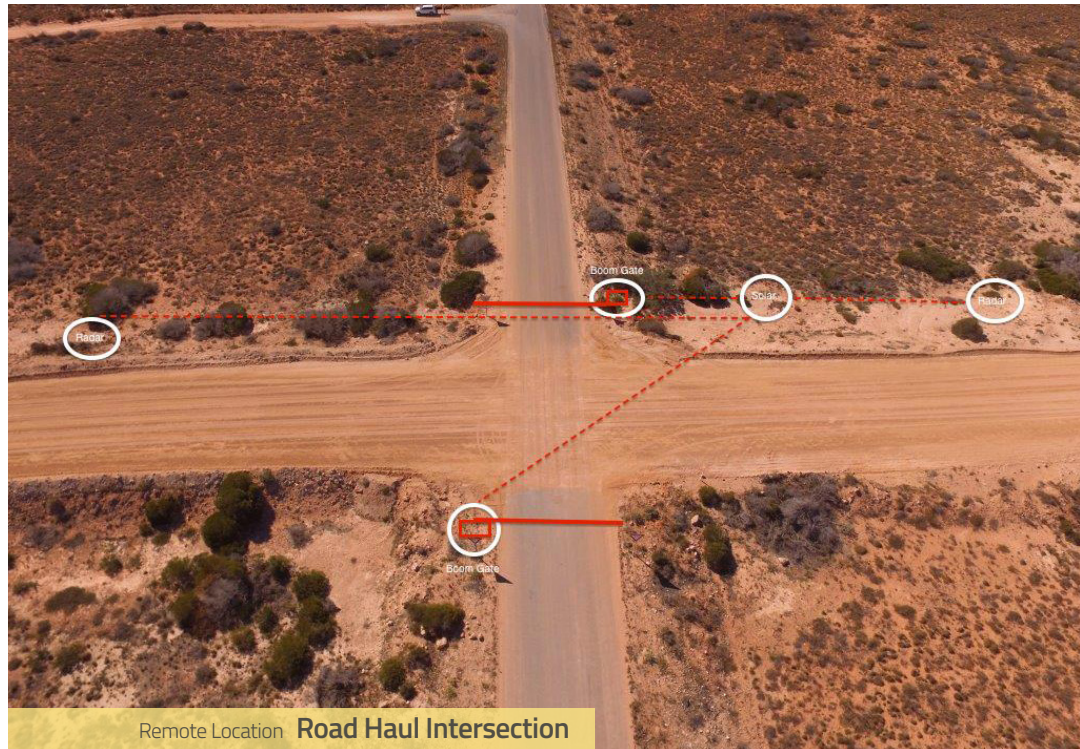
Rio Tinto - Road Haul Intersection

LEDA's WA branch has recently been awarded a project with Rio Tinto Dampier Salt site.

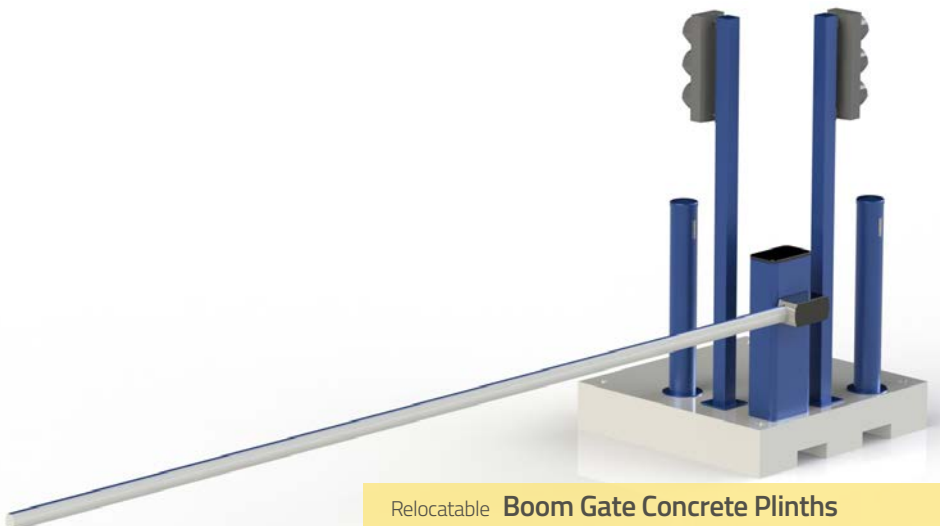
LEDA has been engaged to develop, fabricate and install a portable Road Haul intersection system to provide clear access to the large haulpak trucks as they approach intersections.

During communications with Rio Tinto we have highlighted key areas of risk and drawn a level of inspiration from a rail crossing. With the use of concrete plinths, counter weights and low voltage accessories, LEDA has designed a relocatable asset that can be moved and repositioned during the course of mining and or construction.

GATES



Remote Location **Road Haul Intersection**



Relocatable **Boom Gate Concrete Plinths**



Mining Site **Haulpak**

With the inclusion of CCTV, boom gates, traffic lights and flashing and audible warning devices we can prove a level of safety at the intersection for both Haulpak driver and the drivers on the public road.

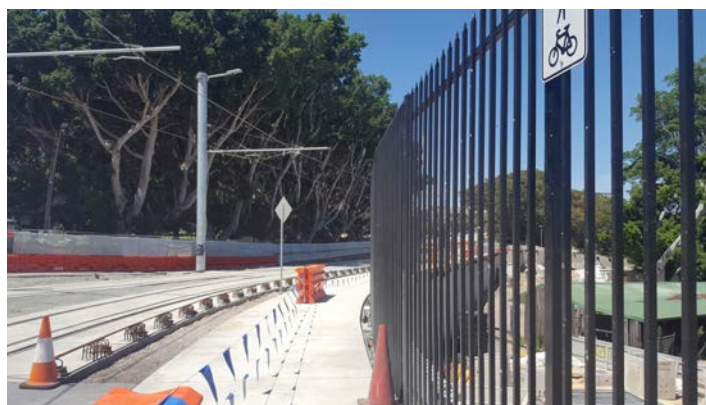
Leda Security Products are soon to release a new division called SecuraSite focusing on the needs for temporary or relocatable security systems, catering for the construction and mining industries.

GATES

Adelaide Airport Gate

LEDA's SA branch has recently completed the installation of a sally port style arrangement at new upgraded entrance facilities at Adelaide Airport's regional airlines area.

LEDA's Tuggerah plant manufactured the 4m clear opening track gate in a very short lead time. The challenge for our manufacturing staff was to fabricate the gate during the Christmas period so that it could be installed in January.



Sydney Light Rail Fencing

Costing billions of dollars Sydney Light Rail will dramatically improve the city's public transport when complete.

LEDA's NSW sales team have been awarded two large fencing contracts. As part of this contract LEDA is manufacturing and installing 3 metres high security fencing along Allison road, Randwick.



Cova Mitigate

One of the simplest and efficient way of closing off vehicular access to illegal or hostile vehicles is our Cova Miti Gate.



Before Installation

GATES

These PAS68 certified gates (*up to 7.5 tonne @64kmh*) are very efficient and cost effective option.

They are available in either *single or double swing models* that can also be bi-folded giving clear width openings of up to 10 metres.



After Installation

United Voice

A large and well respected union office in South Australia has been operating in the inner suburbs of Adelaide for many years. They have a significant amount of traffic, primarily from their members needing regular access.

Recently there has been a major development of housing nearby and the union found that there was beginning to be a lot of unauthorized parking on their site. Our Install team led by Tony Hudson measured up and installed a fence and two auto gate system. Coordination was key as Tony needed to manage a number of sub-trades including civil and electrical. Site is secure and looks smart as well.



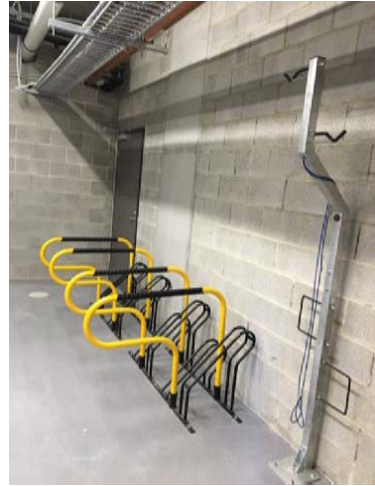
BIKE PARKING

Student Accommodation Bike Racks

LEDA supplied and installed bike racks for a large student accommodation facility on North Terrace Adelaide located close to Adelaide

University.

It involves a range of our popular CBR45C horizontal and BR2101 vertical bike racks to accommodate 50 bicycles.



Bike Shelter for School

The Melbourne team has just completed a cantilever style bike shelter for a large eastern suburbs school which is going through an expansion phase.

The result was a simple design by LEDA offering shelter for thirty two bikes at this school. The racks used are the highly popular CBR4SCTM compact racks.



Bike & Scooter Racks for School

A small eastern suburbs public school in Adelaide received a DPTI funded grant for new bike parking to encourage children to ride to school.

They made good use of the spaces available with a mixture of bike and scooter racks.



Bike Cage for School

Working closely with the local school's requirements, LEDA's design team came to a solution for a secured bike and scooter parking area for the premises.

With 16 x bicycle parks and 26 x scooter parks in a lockable area with a level slab the school was extremely excited once completed. There was a tight schedule that had to be met, make the site ready for the start of school for the New Year and this was achieved.

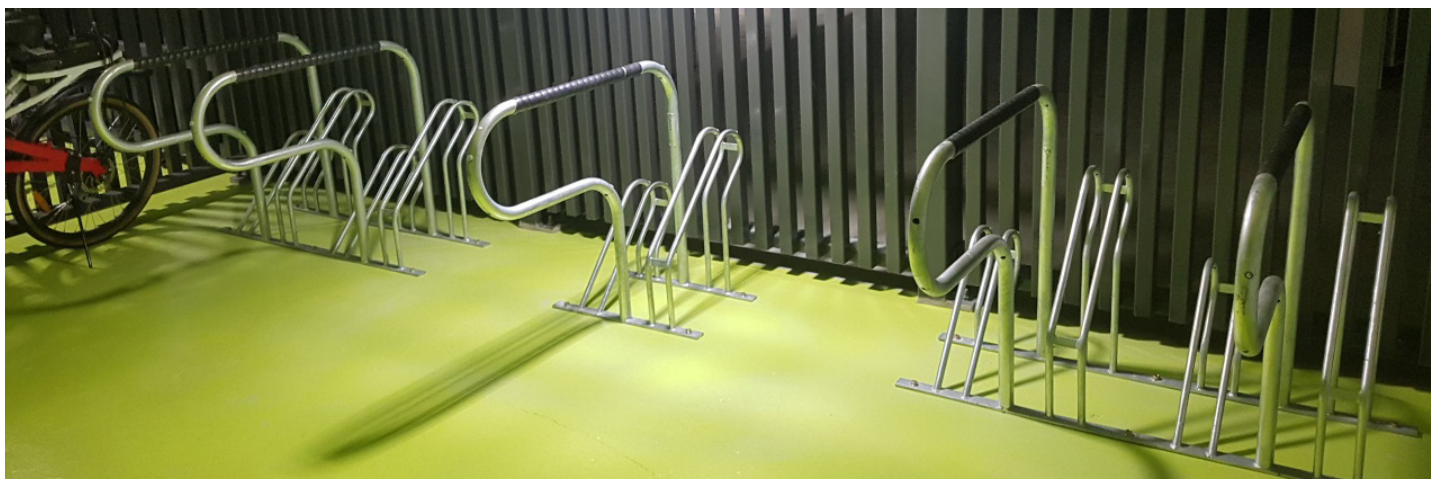
LEDA was able to meet the client's budget and time frame whilst creating a very practical and modern day version of the traditional school bike shed.



Perth EOJ Facility

LEDA's WA office has recently completed an end of journey bicycle facility for the Swan Group who are located in the CTA Building on the Esplanade in Perth.

The project involved supplying and installing a number of our Securabike CBR6SC bike racks and a BBR01 Bike repair station.



BIKE PARKING USA & CHILE

University of Vermont USA

Our American distributor **Duo-Gard** has recently forwarded details of a successful bike shelter project which was installed at the University of Vermont in Burlington, Virginia in the spring of 2017.

Working with WTW Architects and Engelberth Constructions the project provided secure bicycle parking for 176 students at the new Freshman Dormitory that was being built.

The majority of the bicycle parking was achieved using our CBR10M dual height Securabike racks.



Bike Parking Santiago

From Chile we have two Securabike installations to mention.

The first is of our BR00B circular bike rails that were installed at a restaurant in the Las Condes commune.

The second picture is of our BBR001 bike repair station installed at a Public Health Institute in Santiago. As seen in the picture bike repair station is installed in a prominent spot providing easy and convenient access to bicycle riders.



Stainless Steel Bike Rail Upgrade

For over 20 years LEDA have normally supplied all our Securabike bike rails in grade 304 stainless steel, with grade 316 being available as an option at extra cost.



Bike Rail **SBR11B**

As a result of increased requests for grade 316 (rather than 304) we investigated how we could reduce our material purchasing costs and have been successful in negotiating cost saving agreements for the higher grade (316) stainless steel. Commencing in February LEDA will now be manufacturing and supplying all our popular bike rails in grade 316 stainless steel, with no additional costs to our clients.



Bike Rail **SBR85B**

TECHNICAL NEWS

Shonky Bollard Suppliers

We would like to bring to the attention of our industry that we have several bollard suppliers misleading potential clients that they can supply bollards tested to AS/NZS 3845.2:2017.

This standard primarily relates to *Traffic Barriers* and has nothing at all to do with security or impact rated bollards. **Section 8, Cl 8.1 clearly states Security Bollards are beyond the scope of this standard.** So if you hear of any bollard supplier referring to this standard for bollards *please be aware you may be being misled.*



New HVM and High Security Manager

Stewart Miller has recently been appointed to head up LEDA's HVM and High Security projects team.

The appointment follows LEDA's success at winning numerous large projects across Australia during the second half of 2017.

New Architectural CPD Presentation

The Australian Institute of Architects has recently offered a new **CPD Presentation** that will provide participating architects with **One Formal CPD Point in Design.**

To organise a presentation for your architectural practice
Call 1300 780 450

LEDA's new Presentation is on Hostile Vehicle Mitigation & Protection of Public Spaces

- A better understanding of how to design HVM for your projects
- How to protect people in public spaces
- The importance of providing physical protection
- Insights on PAS68 & IWA14-1 Standards
- Do we need certified or engineered solutions
- What options are open to you that will cause minimum interference to the aesthetics of your project
- What can happen if you get it wrong

MESSAGE FROM THE CEO



I hope 2017 ended on a high note for everyone and you all took a break to spend some well-deserved relaxing time with your families and friends to celebrate Christmas, the New Year and to recharge your batteries, and that 2018 has started on a very positive note.

As you can see in this edition of *Perimeter*, we've been very busy at LEDA completing many successful projects across the country. Sure there have been challenges along the way but our focus has been on meeting clients' expectations with a high quality outcome and to this end we continue to achieve this.

In 2018 the level of activity and projects we are being engaged to perform has moved to another level. Generally December and January are our two slowest months as people wind down to celebrate the festive season and take deserved time off but this time it was different as we had our busiest December and start to a new year in quite a while. Many of the changes and improvements that we initiated late last year are starting to take shape and deliver very positive outcomes in terms of how we deal with clients, deliver products and solutions, perform installations, conduct our maintenance service, and develop new products to better protect your assets and our Australian citizens.

As part of my review of the business I have also now had the opportunity to visit our operation in Ningbo China which to date has predominantly focused on manufacturing bicycle parking products and selling them internationally. I was very impressed with the operation and I see our China operation playing an important role in working with our key manufacturing operation in Tuggerah to better service our Australian clients with more economic solutions as well as supplying LEDA's high quality Australian products worldwide. I see many positive things to come. I am also thrilled to advise that in the last two months LEDA has been awarded three very high profile *Hostile Vehicle Mitigation (HVM) projects* – *Adelaide Oval* in South Australia, and *two very prominent sites in Victoria*, which in time we will be able to disclose. These were all very complex and demanding tenders and these wins further endorses the confidence that key government, protection and community decision makers have in LEDA's credentials and capabilities when it comes to HVM solutions that protect our citizens and communities from hostile events.

Until the next issue of *Perimeter* all the very best to everyone.

Sandy Capannolo

Chief Executive Officer

PUBLISHED BY: Leda Security Products Pty Ltd ABN 23 067 258 235

Head Office

Design, Engineering,
Manufacturing and
Accounts
18 Reliance Drive,
Tuggerah NSW 2259
Tel: (02) 8413 3430
Fax: (02) 4353 2255

National Sales

1300 780 450



Sales Offices

New South Wales

8/185 Briens Road,
Northmead, NSW 2152
Tel: (02) 8413 3410
Fax: (02) 8677 7119

Queensland

2/387 Lytton Road
Morningside, QLD 4170
Tel: (07) 3613 8270
Fax (07) 3399 5688

Victoria

2/89 Enterprise Way
Sunshine West VIC 3020
Tel: (03) 8399 8150
Fax: (03) 9315 1085

South Australia

1/5 Tooronga Ave
Edwardstown, SA 5039
Tel: (08) 8374 3266
Fax: (08) 8374 3299

Western Australia

1/27 Century Road
Malaga WA 6090
Tel: (08) 6430 1670
Fax (08) 9209 2860