

FEB 2019 **NEWSLETTER**

# *perimeter*

**SECURITY PRODUCT NEWS**

## **WESTFIELD CANNINGTON**

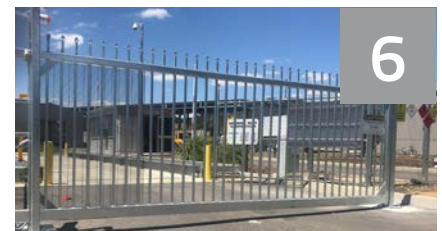


**Impact Rated Bollards**



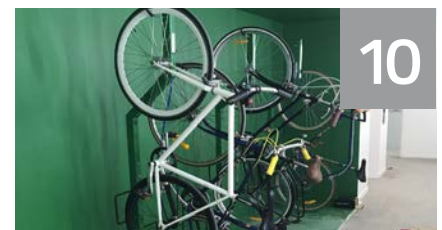
### **BOLLARDS**

Refurbished Bollards, UOS, Light Rail, Adelaide Oval, Supreme Court, Museum ACT, Reflective Tapes, Westfield, Nile St



### **GATES & TURNSTILES**

Loading Dock Boom Gates, Awaba, Miti Gate, Tall Gate WA, Cantilever Gate, Bay Street Depot, Port Augusta, Coates Hire



### **BICYCLE PARKING**

McDonalds, Space Saving Location, PA Hospital, UNSW, Wolli Creek Shelter, NRT Station Racks, Bike Repair Station, EOJ Facility, Hire Racks, International Projects



### **SECURACCESS**

Surface Guard Demo & Surface Guard Features

### **LEDA NEWS**

25 Years of LEDA, Bump Bollard



**PAS68 Rated Miti Gate**



**Adelaide Oval Bollards**



**A Tall Gate in WA**



# BOLLARDS

## Refurbished Bollards

LEDA was contacted by Sydney based Facility Managers to refurbish the street furniture around these twin unit blocks in Chatswood.

LEDA was approached about providing 20 *stainless steel sleeves* to replace existing light grey coloured industrial bollards. These were in stock and provided on a supply and installation basis where in the sleeves provided were an exact fit onto the existing fixed bollards.

The project also required 35 *stainless steel lighting bollards* that were supplied to the electrical contractor to replace the existing and dated lighting bollards around the property.

The end result was a professional looking result which provided a professional facelift to the existing street furniture around the building.

## University of Sydney Bollards

LEDA are proud to continue their relationship with the University of Sydney and FDC Construction by providing *stainless steel locking and removable bollards* to mitigate against vehicle impacts to the student forecourt at the new Faculty of Arts and Social Sciences building at the University of Sydney.

LEDA supplied and installed these bollards, working closely with the builder on timing of installation so as not to effect the build programme or vehicle access during construction.



## Light Rail Projects

In the past few months we have been asked to supply our PAS rated and high impact bollards on three light rail projects currently under development.

This has entailed supplying bollards to both the *Newcastle* and *Canberra* projects and more recently for the yet to be completed Sydney light rail.

This picture was taken at one of the Newcastle sites and involved a combination of our stainless steel *SSB150FA screw down* and *SSP150RA locking and removable bollards*.





# Adelaide Oval Security Upgrade Completed

LEDA partnered with SADB in Adelaide to complete this \$5m plus **Hostile Vehicle Mitigation (HVM)** upgrade for Adelaide Oval.

Working together the complex project required installation of a wide range of **PAS68 Bollards (static and retractable) and gates**. According to reports the project went very smoothly due to intricate planning and good project management by SADB.

## BOLLARDS

This photo was taken on day of the first event following completion of the security upgrade when all the bollards went operational.



Adelaide Oval, Retractable Bollards in Operation

## Supreme Court Canberra

LEDA's Sydney based installation team have recently completed installing PAS68 rated bollards to the perimeter of the Supreme Court in Canberra as part of a major security upgrade.

The consultants and client opted to use the **LEDA/ATG shallow mount bollards** that only require a footing depth of 165mm alleviating the expensive cost of relocating any existing services.





# BOLLARDS

## Catering for the Visually Impaired

LEDA are aware of the difficulties that many people with poor vision have with identifying and recognising stainless steel bollards.

Our sales staff can advise and suggest the installation of *black reflective tape to the bollards* in an attempt to make them more visible.



## National Museum Canberra

Another important and major project in Canberra has contracted LEDA to install a number of our *stainless (SSP150RC) locking and removable bollards* at various locations on the site.

These heavy duty/high impact bollards weigh over 120kgs and require our special bollard lifting trolley to remove and replace them.



Lifting Trolley



## Pedestrian Access

Neutral bay is a very cosmopolitan precinct on Sydney's lower North shore and home to hundreds of stylish eateries.

Pedestrian access and security were accomplished on this site with a combination of planter boxes and LEDA's *locking and removable stainless steel bollards*.

The bollards can be easily removed and replaced when required.



# Cannington Shopping Centre Bollards

LEDA's Western Australian office recently completed a major physical security upgrade to this large shopping centre in Perth for the Scentre Group.

It involved the supply and installation of LEDA's *high impact stainless steel bollards* at numerous sites around the complex.



The bollards have been strategically located to provide added safety to pedestrians and to prevent illegal and accidental vehicle ingress.



## Bollards with Removable Handrails



## City of Perth Bollards

LEDA last year manufactured and installed over **350 stainless steel bollards** for the City of Perth on the Swan River Pedestrian Bridge and Nile Street Projects. The location is across the Swan River from the new Optus Stadium.

The installation of the Nile street bollards carried out during one of the Perth's wettest periods saw the trenches were flooded continually creating huge difficulties for LEDA's civil contractors.





# GATES

## Loading Dock Boom Gates

Zonix Construction approached LEDA security about provision of ten vertical **manual swing booms** to provide added security and safety to the edge of loading docks during truck deliveries for the Woolworths fulfilment centre in Brookvale.

The manual boom gates supplied to Zonix are counter balanced for ease of operation.

Small modifications were built into the gates to allow them to be locked in either up position or when lowered.



## Waste Management Centre

LEDA NSW branch recently supplied and installed this 12m wide opening **undercarriage cantilever sliding gate** for Awaba Waste Management Centre.

Undercarriage gates are popular option for cantilever sliding gates with wider openings and where site condition such as sand drifts affect operation of the gate.

This sliding cantilever gate is operated using a remote or pin pad that allow access to garbage trucks and other staff vehicles entering and leaving the site frequently. The gate was assembled, installed and commissioned by LEDA NSW installation team.



Undercarriage Cantilever Sliding Gate



## Adelaide Oval Miti Gate

Using Fibre strap technology this Miti gate has a **PAS rating of 7.5 tonne at 64Km/hr**. The LEDA/Cova gate has an 8 metre clear opening and while this one was designed for manual operation they can also be automated.

## GATES

LEDA have the option of an additional **double swing model** CSG10930 rated at **7.5 tonne @ 48Km/hr**. This model provides a wider 10 metre clear opening. When compared with many other similar rated PAS products the Miti gate is often a more practical and economic solution.

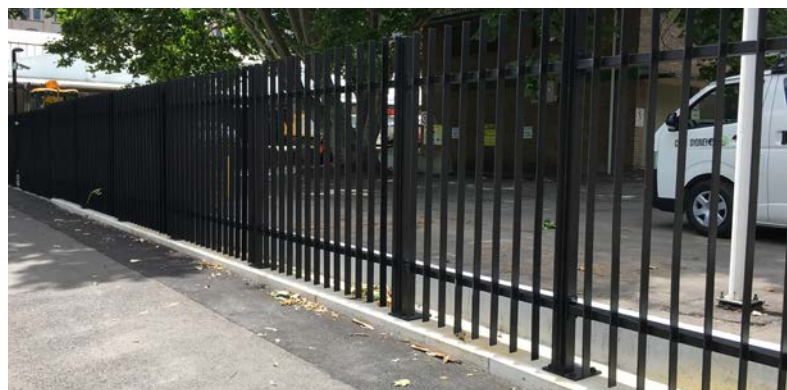


Adelaide Oval, PAS68 Manual Swing Gate

## Bay Street Depot

LEDA were contacted by Matrix Constructions, the winning tenderer for the City of Sydney Bay St Depot fence and gate upgrade works. LEDA's **redfern design fence, track sliding and pedestrian gates** were specified for the project. LEDA's design and engineering team also assisted the contractor and electronic security installer who integrated the client's access control into our track sliding gate.

Through a lot of challenges revolving around property boundaries and timing of installation, LEDA worked with the contractor to install the fence and gate through some challenging conditions in maintaining property boundaries. The end result was a professional looking black gloss finish on both redfern fence, sliding gate and pedestrian access gate.





# GATES

## Port Augusta Gate

LEDA was contacted by Port Augusta DPTI office when the main exit gate was hit by a truck for replacing the damaged gate.

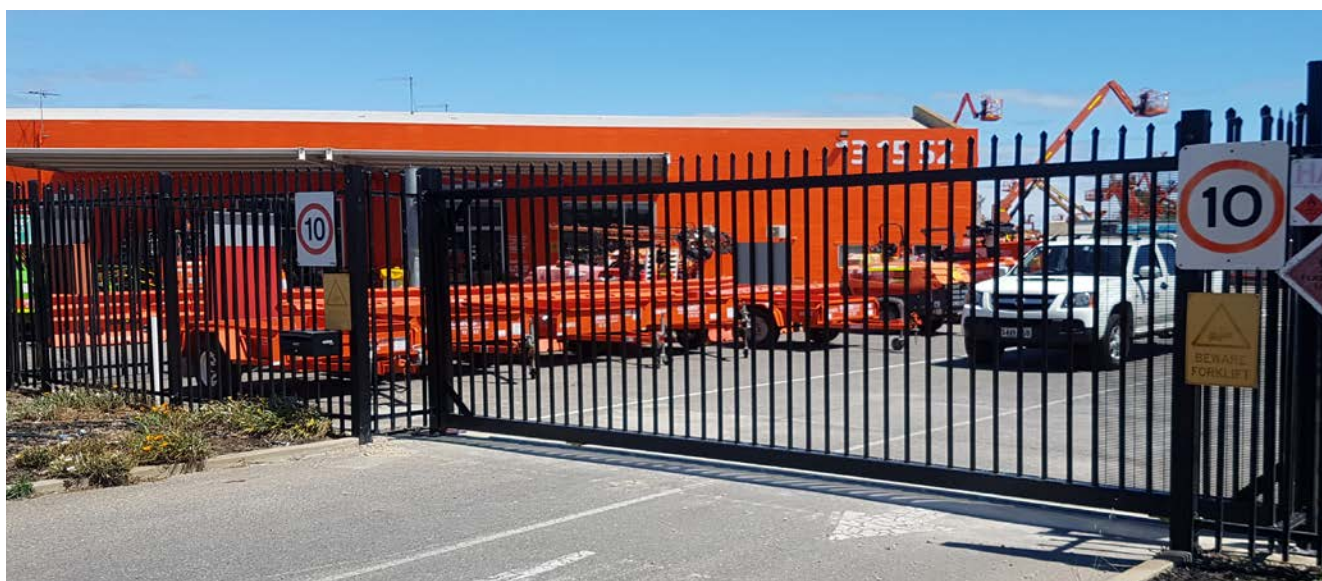
LEDA supplied and installed the main exit gate while matching the gate finish with existing main entry gate.



## Coates Hire Sliding Gate

LEDA's South Australian office installed this 6 metre **track sliding gate** at Coates hire Albert Park depot. The busy location required us installing internal and external safety loops to minimise the likelihood of accidents.

While the site needed free exit from the site our technicians also installed a safety eye lock that allows the gate to be locked at night. Our engineers also installed a larger and stronger drive motor capable of providing the client with 100% duty cycle operation.





# GATES

## A Tall Gate

This large **5.6 metre high track gate** was manufactured and installed by LEDA's WA team at the loading bay entrance for Cannington shopping centre in Perth. It was so tall it needed to be manufactured in two sections so that it could be painted and then transported to site.

It was then assembled and commissioned by LEDA staff.

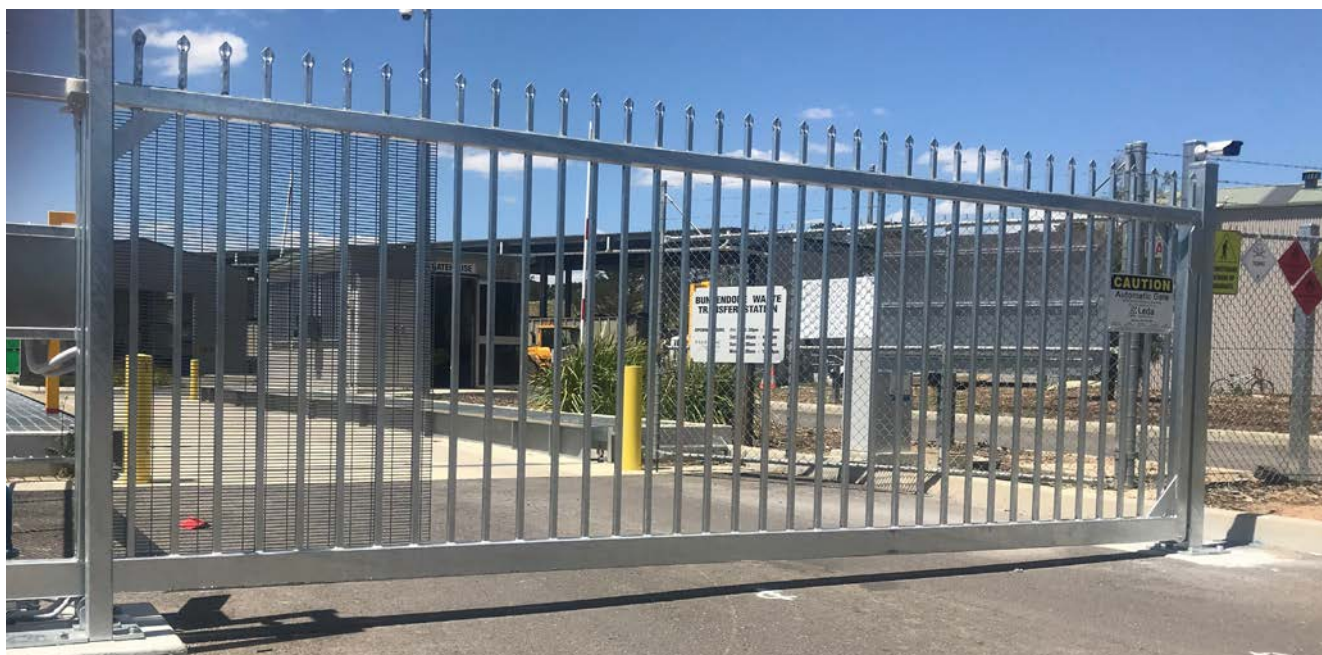


## Cantilever Gate Reliability

LEDA staff are instructed to point out to customers the operating reliability and servicing cost savings that well designed and manufactured **cantilever gates** provide over track sliding gates.

In most industrial gate installations trucks and heavy vehicles can cause ongoing maintenance issues with the surface mounted track which is required with track gate installations. While marginally more expensive initially cantilever gates will be more economical to service and maintain over the life of the gate.

This gate recently installed at the Recourse Recovery Facility for Queenbeyan-Palerang Regional Council has no track that the high number of truck using the complex might damage the track.





# BIKE PARKING

## McDonald's Bike Racks

Not everyone that visit's a McDonald's restaurant drives a car as witnessed at this Canberra outlet.

Pictured is our popular *concord double sided rack* that allow cyclists to park conveniently from both sides.



## Space Saving Location

With our large range of Securabike bike racks our staff can normally find an answer to find a bike parking solution for unusual locations.

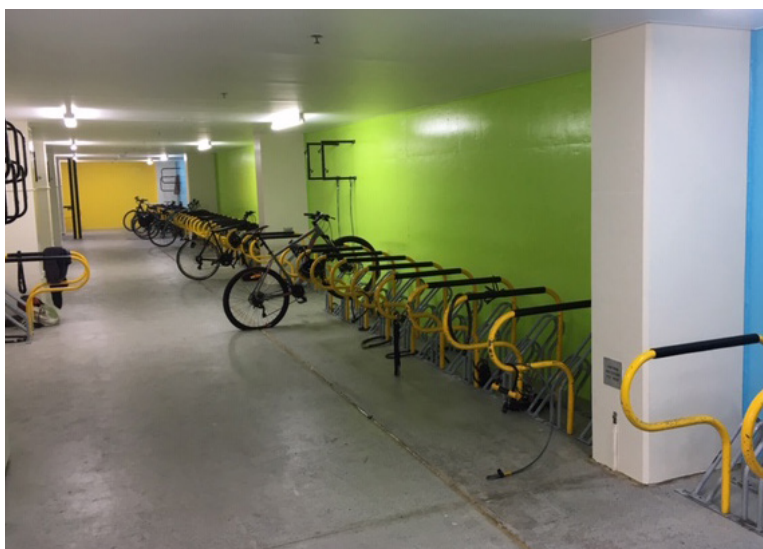
In this case our Securabike *BR2101 vertical racks* were the ideal answer for this small site.

While not obvious in this picture the BR2101 is designed to hold two bikes by staggering the height of the front wheel hook.

## Hospital EOJ Facility

LEDA's QLD branch recently installed a combination of Securabike horizontal and wall mounted racks in a *End of Journey Bike Parking Facility* at Princess Alexandra Hospital - a major teaching hospital in Queensland.

Our popular *horizontal bike racks CBR4SC & CBR2SCTM*, and *wall mounted rack BR542F* were installed in this hospital's newly built bicycle parking room. Two bicycle repair stations (BBRS01) were also installed on the other side of the room that allows cyclists to carry out routine maintenance and repairs.





## University of NSW

LEDA have recently supplied and installed hundreds of our **BR85F stainless bike rails** at six locations in the University to handle the growing need for their student cyclists.

Please note our bike shaped racks that signpost and help to identify the purpose of the racks.

## BIKE PARKING



## Wolli Creek Shelters

LEDA's Sydney install team recently supplied three of these **bike shelters and rails** at this western suburb regional shopping centre.

The attractive steel and gloss shelters installed at this prime location provide cyclists and their bicycles protection from the weather.



## Kellyville NRT Station

These **CBR2GS dual height bike racks** were recently installed at the new Kellyville railway station for the soon to be completed Northwest Rapid Rail line in Sydney.

The dual height rack system helps maximise the number of bicycles that can be accommodated for cyclists wishing to park their bicycles at the station while they commute. Space saving is also achieved with these dual height racks by staggering the height of the front wheel on both decks. Gas strut assistance is provided with the top rack to simplify the loading and unloading of bikes.



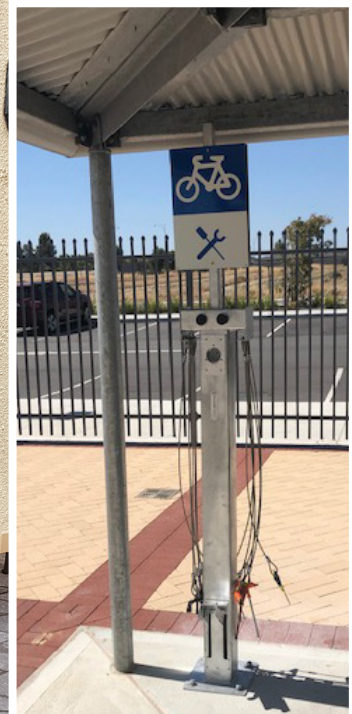
# BIKE PARKING

## Bike Repair Stations

LEDA's **BBRS01 repair stations** are extremely popular in locations catering for multiple cyclists. In particular they are being installed by schools, local government and tertiary institutions across Australia.

The repair stations have a foot activated air pump and a combination of tools allowing cyclists to make minor repairs and adjustments to their bikes. These pictures show units installed at Honeywood Primary school in Western Australia and Clarence Gardens community centre in South Australia.

Repair Station, SA



Repair Station, WA

## End of Journey Facility

LEDA are often asked to provide a turnkey solution for commercial clients wishing to install secure bicycle parking for their employees.

In this project LEDA provided a combination of **horizontal and vertical bike racks** as well as manufacturing the total enclosure including the **PED gate** for Northern Beaches Council. The finished project provided secure parking for 26 cyclists. LEDA's experienced staff can assist with layout designs and product selection to ensure you optimise the number of cyclists that can be accommodated.



## Bike Rack Hire

Our Brisbane office which is always keen to assist in the promotion of cycling as a healthy mode of transport at bicycling events by hiring out our special purpose **hire racks** for bicycle owners attending these events.

In this instance we helped a Morningside State school after a recent fire that destroyed all their bike parking facilities.





# BIKE PARKING INTERNATIONAL

Bike Racks, USA

## Bike Racks USA

*Duo-Gard* Securabike's US distributor recently completed this project for a well-known and large university in Massachusetts.

This project involved *Securabike CBR2GS dual height racks* which offer the best method of catering for the greatest number of bikes. 76 racks were supplied and installed at the site allowing students to park their bicycles securely and under cover.

## Singapore Hospital Bike Racks

In our previous newsletter No.51 we featured a bike rack project for a hospital in Singapore. Here is another hospital project shared by our Singapore distributor *Hiap Soon*.

In this location our popular compact model *CBR2SCTM racks* were installed spaced 500mm apart. Bike racks are well utilised by hospital employees and other visitors as seen in the picture.

Bike Racks, Singapore



Bike Rails, Chile

## Bike Rails Chile

Securabike Chile distributor *Servicios Generales* recently installed these Securabike *BR85 bike rails* for a project in Santiago.

Securabike rails were installed at the heart of the local community centre allowing cyclists to park their bicycles conveniently just before heading off to catch the newly inaugurated Santiago Metro Train Service.

Large quantity of bike rails were installed in and around this newly built Metro line that gained attention and benefited cyclists of this locality.





# PROTECTING PUBLIC SPACES

SECURACCESS

## Surface Guard

Crash tested pedestrian and wheelchair friendly LEDA's Surface Guard is designed to provide pedestrian security at *Temporary Events* and *VIP Visits*.

- Available Ex-stock
- Product demo available now at our Northmead sales office.

PRODUCT

IMPACT RATED  
PEDESTRIAN FRIENDLY

## SURFACE GUARD

FOR TEMPORARY EVENT SECURITY





UNIT 8, 185 BRIENS ROAD, NORTHMEAD  
CONTACT GREG STUART 0425 743 633

### Surface Guard Features

- IWA14 -I crash certified product
- Rapidly deployed and quick to remove
- Innovative modular design
- Reusable on multiple sites
- Easily portable and stackable
- Versatile - For multiple applications
- Caters for road cambers
- Easily anchored
- Cost effective pedestrian security

2.5 tonne vehicle @ 48Kmph

{IWA 14: V12,500(NIG)/48/90:4.5}

7.2 tonne vehicle @ 32Kmph

{IWA 14: V17,200(N3C)/32/90:4.8}





## HAPPY BIRTHDAY LEDA

In January of this year LEDA had cause to celebrate a milestone of 25 years of continuous operation.

Since humble origins in January 1994 when the company started with a single product it has grown into a national company with branches across Australia and manufacturing plants on the Central Coast in NSW and in Ningbo China.

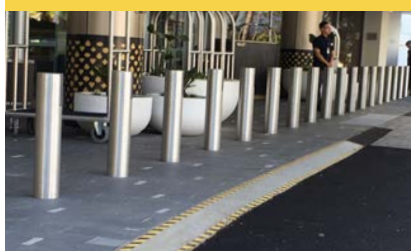
Beginning with a *patented Locking and Removable Bollard (the SP90R Securapost)* our bollard range alone has grown to over 500 models. The company has diversified over the years introducing Securabike bicycle parking products and a large range of industrial gates and turnstiles. Our staff has also grown to over 100 employees.

LEDa is currently witnessing major growth in *Hostile Vehicle Mitigation (HVM)* projects across Australia, which are fuelling our growth phase as we meet the requirements for this market.



## LEADER IN PERIMETER SECURITY & HOSTILE VEHICLE MITIGATION

### BOLLARDS



### BIKE PARKING



### GATES & TURNSTILES



### HVM & HIGH SECURITY



### BUMP BOLLARD



## Bump Bollard

This new bollard was designed and developed by LEDA's Ningbo Engineering team.

The bump bollard is designed primarily for industrial applications and car parks where accidental impacts from vehicles is highly likely. Factories and industrial locations will be a key market for this innovative new LEDA product. The bollard is capable of bending 15-20 degrees before returning to its vertical position.

*For more information or technical details please do not hesitate to contact your nearest LEDA sales office or email [sales@ledasecurity.com.au](mailto:sales@ledasecurity.com.au)*



## MESSAGE FROM THE CEO



We are well into 2019 and seeing increased activity across all LEDA Divisions, which has come on the back of a very successful 2018.

It is timely to thank our customers for their continued support, our 25 years of expertise in providing value when a solution is required - from the unusual or sensitive security project, bike parking and end of journey facilities to sensible solutions for vehicle and pedestrian access controls, is a testament to our ability to deliver on the promise.

At LEDA we share a clear vision, to become the *market leader in mechanical perimeter security/access control products*.

When I look at the new and repeat business that LEDA continues to win, I think of the in-house knowledge and experience combining with our international strategic relationships that provides the products and services that sets LEDA aside from its competitors.

As the High Security and HVM category continues to grow, our Bid Team are handling an increased volume of enquiries and LEDA is well positioned to assist clients with a range of solutions that meets their needs. We have recently been awarded a number of projects to provide high security installations that will feature in the coming editions of the *Perimeter*.

Gates of all kinds feature in this edition of the *Perimeter*, showcasing LEDA's capabilities in meeting our client's unique requirements. Our manufacturing plant located in Tuggerah, NSW, continues to produce high quality products.

To meet this growing demand, LEDA continues to invest in our manufacturing capabilities at both our Tuggerah NSW and Ningbo China plants, together with ongoing development of our technical expertise, we are positioning LEDA for growth.

Due to increased enquiries, LEDA is embarking on expanding its highly successful and accredited *CPD presentations to Architects and Specifiers* as demand for *HVM and Bicycle Parking* solutions grow. If you would like to have one of our free CPD presentations conducted in your business, please contact our Marketing department at [sales@ledasecurity.com.au](mailto:sales@ledasecurity.com.au) and we will arrange a suitable time to meet your needs.

Len Place

Chief Executive Officer

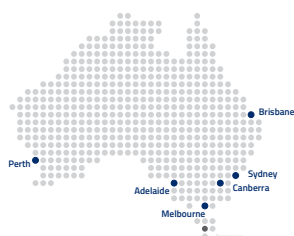
PUBLISHED BY: Leda Security Products Pty Ltd ABN 23 067 258 235

### Head Office

Design, Engineering,  
Manufacturing and  
Accounts  
18 Reliance Drive,  
Tuggerah NSW 2259  
Tel: (02) 8413 3430

### National Sales

1300 780 450



### Sales Offices

#### New South Wales

8/185 Briens Road,  
Northmead, NSW 2152  
Tel: (02) 8413 3410

#### Queensland

2/387 Lytton Road  
Morningside, QLD 4170  
Tel: (07) 3613 8270

#### Victoria

2/89 Enterprise Way  
Sunshine West VIC 3020  
Tel: (03) 8399 8150

#### South Australia

1/5 Tooronga Ave  
Edwardstown, SA 5039  
Tel: (08) 8374 3266

#### Western Australia

1/27 Century Road  
Malaga WA 6090  
Tel: (08) 6430 1670

Follow us



**LEDa**



ISSUE 52 | FEB 2019

LEDa SECURITY PRODUCTS

*perimeter*

16