

JUNE 2019 **NEWSLETTER**

perimeter

SECURITY PRODUCT NEWS

BANKWEST STADIUM



LEDA PAS68 Rated Bollards



Sydney Light Rail Gate



PAS68 Bollards Bankwest Stadium

2



BOLLARDS

Safety Protection, Bankwest Stadium, R&D and Testing, Trams Making a Comeback, Major Roll-outs, Shopping Centre Bollards

6



SECURACCESS

Certified V Engineered Solutions, Crash Rated Guardian Road Blocker, Temporary Event Barrier - The Surface Guard

9



SECURASITE

Sydney Light Rail, Repeat Clients, Waste Transfer Centre Gate, TMH60 Boom Gate, Parramatta Public School Gate

12



BICYCLE PARKING

Ramsgate Bike Racks, Subway Racks, Hospital Racks & Repair Station, CBR45C Rack, Lockers, International Bike News

LEDA NEWS

Exhibitions 2019, New Bike Handbook, LEDA Employees

BOLLARDS

Safety Protection

LEDA's Queensland office provided details and photos of a project recently completed installation on the Gold Coast.

The property managers were keen to provide added protection to this glass frontage dental practise due to its main road frontage.

LEDA's *SP150FA stainless steel bollards* were chosen and the installation was undertaken after hours to minimise disruption.



Bollard Testing and R&D

When it comes to supplying bollards with a specific impact ratings LEDA is possibly the only Australian company able to ***certify the impact rating of various Security Bollards.***

Ongoing R & D programs and impact testing that our Engineering department has undertaken over the past 25 years has led to LEDA developing in house expertise in

the design and manufacture of high quality security bollards. LEDA's first vehicle impact tests were conducted as far back as 2004 at Monash University when our team were designing bollards to protect Australia's best-known icon the *Sydney Opera House*. Further vehicle impact testing has now led to LEDA being recognised as a ***world leader in bollard technology.*** In this application the bollards supplied and installed for Stockland's at the Greenhills shopping centre have a ***certified impact rating of 2.5t at 40km/hr.***

LEDA has a range of engineered rated bollards that can stop a 2.5, 3.5 or 7.5 tonne vehicle travelling at a velocity as low as 10Km/hr or at a higher velocity such as 48 or 64Km/hr, meeting most project requirements.

Bankwest Stadium

Sydney's newest stadium, the "Bankwest" was officially opened in April of this year and is being hailed as a success.

The 30,000-seat stadium is located at Parramatta and in its first month hosted numerous sporting events with patrons praising its design and amenities making it a great venue to witness sporting events.

BOLLARDS



Bankwest Stadium, LEDA PAS68 Bollards

As to be expected, LEDA was contracted by the stadium's builders **Lend Lease** to supply both the HVM security and architectural bollards used around the stadiums' perimeter. This follows similar recent bollard installations at the Optus Perth stadium, Adelaide oval and currently with the MCG in Melbourne.

The HVM Bollards selected included LEDA's certified **PAS68 static bollards (IBR200FP68B)** which are manufactured here in Australia. LEDA is the only Australian company with its own PAS rated bollards and which we manufacture locally.



BOLLARDS

Major Bollard Roll-outs

Being one of the few companies with the resources to undertake bollard installs across Australia has resulted in LEDA being chosen to partner with many major retailers on Security and Safety upgrades.

One such project has been conducted to improve the security on all the roller shutter doors for the 150 Bunnings stores in Australia. In this instance our famous *SP90 locking and removable bollards* were used.



More recently we have also been assisting the NRMA in supplying LEDA *Aegis bollards* to *protect their electric car charging stations* which are being rolled out across NSW.



Protecting Shopping Centre

LEDA has always been at the forefront of designing, manufacturing and installing shopping centre bollards, protecting its precincts across number of different shopping centres around the country.



More recently LEDA NSW team completed this project for South Village Shopping Centre, Kirrawee NSW.

The project includes LEDA *stainless steel regal, static and removable, bollards* securing complex entrance.



Trams Making a Comeback

There seems to be a wave of the light rail projects at a number of Australian cities as trams re-emerge as a major means of public transport.

You might recall that we had an article in our last newsletter featuring our bollards used in the Newcastle light rail project. More recently LEDA were contracted to manufacture and supply *PAS68 Hostile Vehicle Mitigation (HVM) bollards* for the newly opened Canberra Metro.

BOLLARDS



Canberra Metro, LEDA PAS68 Bollards

The writer of this article also happened to capture an old Melbourne tram passing a row of recently installed *PAS68 Westminster bollards* at the entrance of a high profile site. The heritage look of the bollards suit Melbourne's beautiful old buildings and bluestone architecture.

LEDA has also been contracted to supply and install a number of very high impact bollards for the yet to be completed *Sydney light rail* which we may be able to feature in the next newsletter.



Westminster PAS68 Bollards, Victoria

PROTECTING PUBLIC SPACES

SECURACCESS

PAS68 Bollards, Bankwest Stadium



Certified V Engineered Solution

Governments and cities around Australia are accepting the responsibility of needing to spend more and more to provide physical security in public spaces and are increasingly spending much more on these projects than they may need to.

In many ways I feel LEDA is partially responsible for the huge financial burden involved as we educated consultants and governments about PAS68/69 on the work that the United Kingdom had pioneered in this field. Much of the research and vehicle impact testing that the UK Government subsidised resulted in the PAS standards being published in 2007.

As a result, we now invariably see PAS certified products being specified simply to get that tick of approval and certainty, which then requires most PAS products needing to be imported at inflated costs over locally available engineered solutions.

The security industry (consultants, suppliers and contractors) have gained a wealth of experience in this field over the past decade and are now capable of specifying a bollard or barrier and engineering the footings required to withstand the impact specification.



PAS68 Bollard Bike Hoop, Coogee Bay

PROTECTING PUBLIC SPACES

SECURACCESS



Engineered Bollards, Liverpool NSW



Engineered Bollards, Perth WA

What is often overlooked or simply not appreciated is that the PAS rating relates to the bollard or barrier. The footing (deep or shallow mount) can be generic or designed for the project.

LEDA who have been at the forefront of the HVM market for over 20 years can often supply the exact same product (sourced locally) that has been tested in the UK and install it in the same footing design at "half the cost" of the imported PAS certified product.

So please keep in mind when considering your budgets that there are potentially considerable cost saving in using an "engineered solution" over "a certified" on your future security upgrade projects.

This article has been written by David Matthews, LEDA's Founder and Managing Director.



Engineered Rated Bollards, Perth Bus Interchange

PROTECTING PUBLIC SPACES

SECURACCESS

Guardian Road Blocker

Our NSW based install team are currently installing a number of automated road blockers at a prominent Government site in NSW.

The ATG manufactured *Guardian road blockers* incorporate the latest technology and only require a 400mm shallow mount footing. This road blocker is IWA 14 rated stopping a 7,200Kg vehicle at 80Km/hr.



Road Blockers, Installation in Progress

Temporary Event Security Barrier

The Surface Guard is a successfully crash tested temporary event security barrier that can be easily deployed to protect major events like Sydney New Year Fireworks, Sydney Mardi Gras Parade, City to Surf Marathon, sporting events, musical concerts and other events around the country.

Following the recent terrorist attacks around the world, there is a sense of fear and urge to implement effective temporary barriers, not just placing concrete barriers & blocks, protecting people in crowded spots and large events. This IWA 14 crash tested Surface Guard stops a 7,200Kg vehicle travelling at 32Km/hr thereby providing utmost protection.

Available for Live Demo

For more information

Contact your nearest LEDA Sales on 1300 780 450 or email sales@ledasecurity.com.au



Sydney Light Rail Gates

LEDA was contracted to Coleman Rail to manufacture a number of large industrial gates and fencing along various stretches of the new light rail route on Alison Rd Randwick.

SECURASITE GATES, TURNSTILES & FENCING



Tram Entry & Exit Gate, Alison Road



Vehicle Entry Gate, Doncaster Road

These included vehicular entry gates at the Randwick Race Course as well the light rail terminus and workshops. LEDA's *automatic dual swing gate, pedestrian gate and premier fencing* are shown in the picture.

The project was extremely difficult due to stringent safety and worksafe restrictions. The project also involved constant design changes and modifications to meet site requirements.



Fencing, Alison Road

Despite these difficulties LEDA NSW installation team were able to successfully complete all of the gate installs and commissioning protecting site perimeter.

SECURASITE GATES, TURNSTILES & FENCING

Repeat Clients

It is always gratifying to have customers that keep coming back due to the experience they received on previous orders.

Such is the case with Queanbeyan-Palerang regional council where LEDA have manufactured and installed another

cantilever gate for them at Captains Flat.

Additional safety features, photo electric beams and combined flashing light and audible warning device, were added to meet the council's requirements.

LEDA's cantilever gates are more reliable, robust and always an ideal choice of product for our clients.



Braidwood Waste Transfer Station

While talking about rural NSW we should also mention this **8.0 metre cantilever gate** which our NSW technicians recently installed at Braidwood.

It is normally the case for our gates to be one of the last trades needed on a site however in this case the gate was required very early in the construction phase. The gate was installed providing access to trucks and other service vehicles entering and exiting the site throughout the day.



TMH60 Boom Gate, Bowen Hills QLD



TMH60 Boom Gate, Costco NSW



SECURASITE GATES, TURNSTILES & FENCING

ledasecurity.com.au

TMH60 Boom Gates

LEDA's reliable *TMH60 boom gates* were installed by our Brisbane team for this busy car park at Bowen Hills and another set of boom gates were installed by NSW installation team for Costco Horsley Park depot.

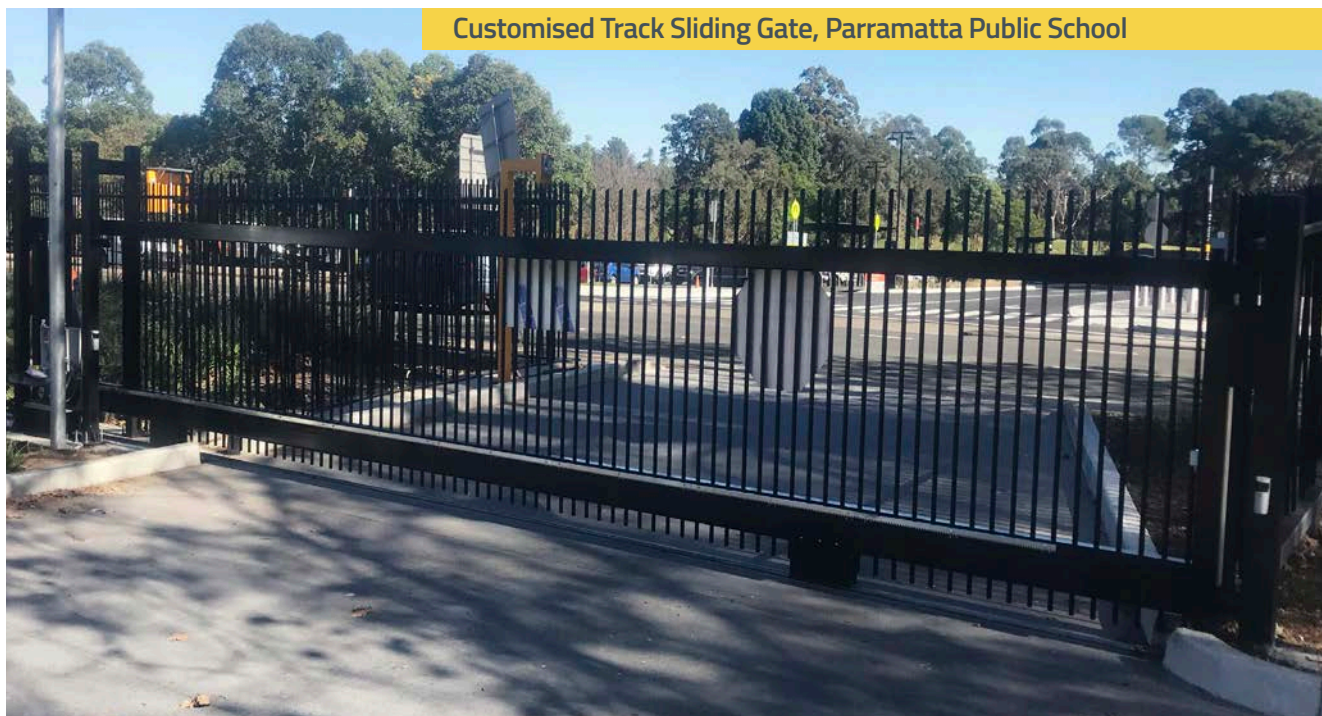
With thousands of these THM60 Boom gates installed across Australia we are often complimented on their 100% duty cycle rating and the minimal maintenance required on these durable workhorses.

Parramatta Public School Gate

LEDA NSW installation team recently replaced this *heavy duty track sliding* gate's leaf after being accidentally hit and damaged by a reversing vehicle.

This heavy main entry gate for staff, student and public access has bespoke round pickets with chamfered edge, unlike usual gate's leaf which are square or rectangular pickets, meeting Parramatta school's architectural requirements.

Customised Track Sliding Gate, Parramatta Public School

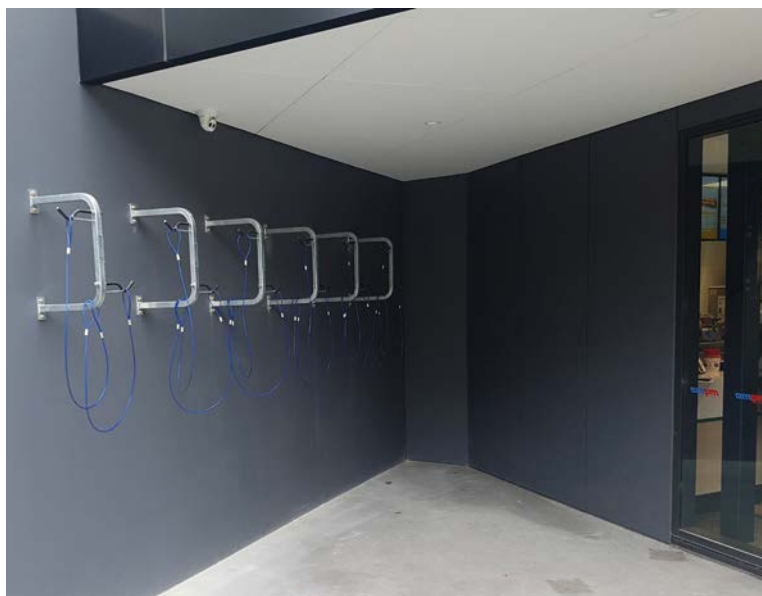


BIKE PARKING

Ramsgate Bike Racks

Securabike circular bike racks were installed at the **Pine Park**, Ramsgate, located in Sydney's southern suburbs and on the shores of Botany Bay.

These attractive **stainless steel round racks** are supplied as standard in grade 316 making them the ideal choice at the Pine Park.



Subway Bike Racks

The Securabike **BR542 model** is the only Australian wall rack that is designed to cater for two bicycles rather than as with most models in the market.

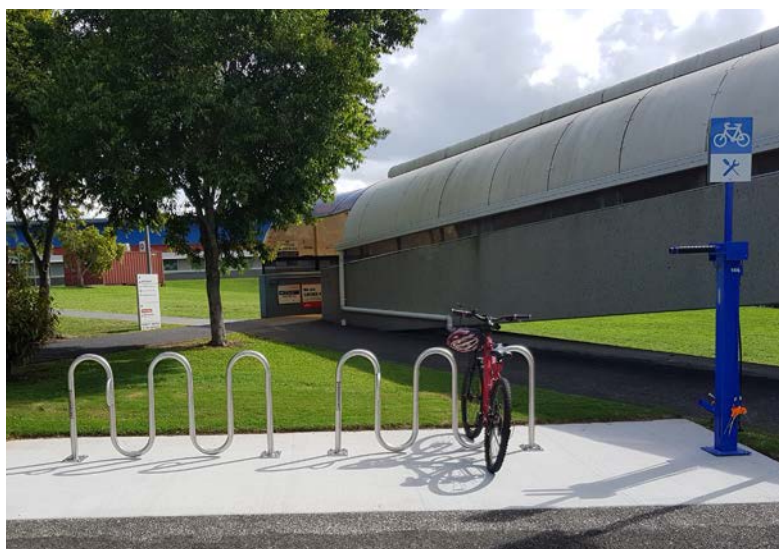
Also unique to our design are the stainless-steel wire tethers that provide cyclists with the opportunity to secure the frame and both wheels of their bicycles.

The bike racks in this picture is for a Subway store in South Australia.

Hospital Racks and Repair Station

LEDA's QLD branch recently supplied and installed **sentry bike racks and repair station** for Princess Alexandra Hospital.

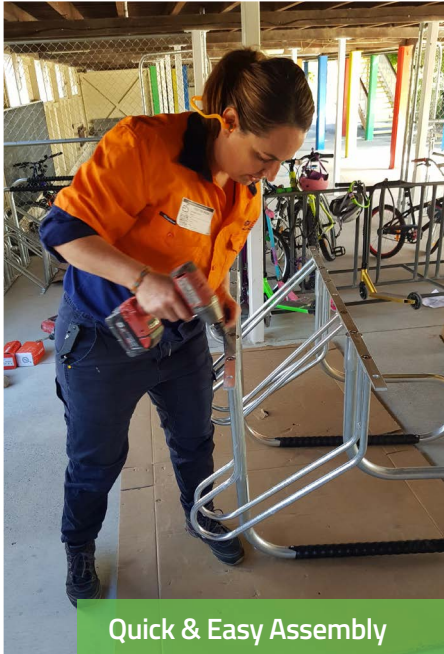
Securabike SBR158B sentry bike racks allows 5 bicycles to be parked securely. Our popular BBR501 repair station is fitted with tools and foot pump allowing cyclists to position their bicycle above ground conveniently to carry out routine maintenance and repairs.



Australia Most Popular Bike Rack

The Securabike **CBR4SC** has been not only ours but the most popular bike rack sold in this country for nearly twenty years.

BIKE PARKING



Quick & Easy Assembly



CBR4SC, Flat Packed



CBR4SC Racks in Use

Apart from its functionality it has also been available as an option in flat pack format for transporting and can be quickly assembled as can be seen with Donna Turner (from our Brisbane office) assembling a rack.

Fully assembled CBR4SC bike racks in the shown picture is for an *End of Trip Facility*. As seen in the picture our racks have been well utilised by cyclists.



SecuraBike BIKE LOCKERS



TBL18S Bike Locker

Securabike has a range of bike lockers that provides highest level of security - ***Class 1 with a high security locking mechanism.***

Securabike's lockers are in wide use in various state and metropolitan rail networks, making them a widely- specified and used locker.

Recently, LEDA supplied ***TBL18S bike lockers*** in hot dipped galvanised finish for a Veterinary Hospital in Artarmon. TBL18S is Securabike's most cost effective horizontal locker supplied in knock down kit form. To know more about our lockers, contact your nearest LEDA sales office.

BIKE PARKING INTERNATIONAL

Bike Racks Chile

Our Chilean Securabike distributor has recently finished an end of journey facility in San Ignacio.

The project involved a combination of *CBR4SC (horizontal)* and *BR2101 (vertical)* bike racks to best utilise the available space.



Bike Racks, Chile

Bike Rails USA

Our USA Securabike distributor, Duo-Gard, has shared this picture of a recently finished project for a zoo in Ohio.

Akron Zoo wanted to accommodate and encourage visitors who arrive on two wheels. The project involved a row of *stainless steel SBR11B bike rails*.

Positioned at zoo's entrance these bike rails allows staff and visitors of zoo to park their bicycles securely and conveniently.

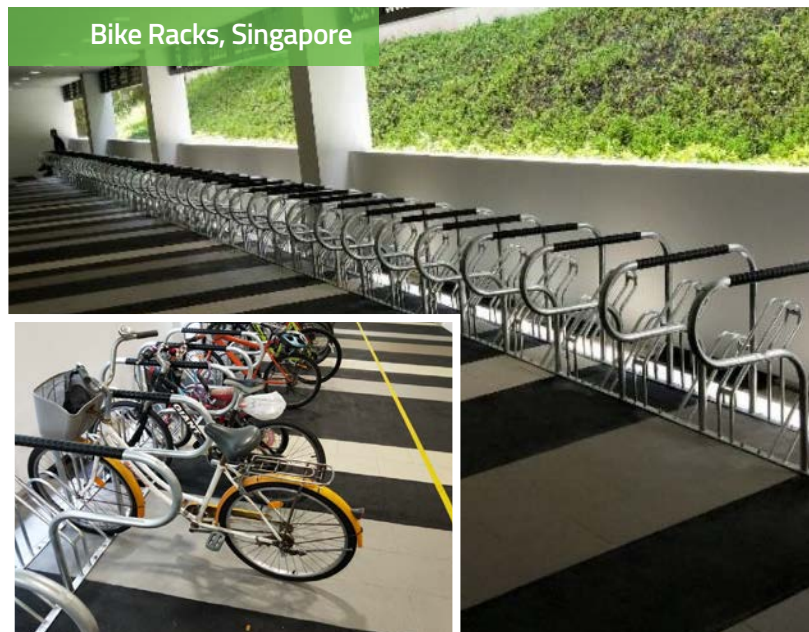


Bike Rails, USA

Singapore School Bike Racks

Our Singapore distributor managed to take a picture just after the installation of our *CBR4SC racks* at the *Singapore World Academy School*. The subsequent photo was taken once the racks were made available to students.

A unique design feature of this Securabike rack is the leaning rail which supports the bicycle and also allows the cyclist to secure both wheels and the frame. Note the plastic protection covering the rail that prevents metal on metal contact. These racks were supplied in a hot dipped galvanised finish.



Bike Racks, Singapore



EXHIBITIONS 2019

Keep an eye out for LEDA at some forthcoming Security Conferences and Exhibitions. We will be attending:



AuSec

AuSec in Canberra on 9th July

Register for LEDA's *Think Tank* session. Topic of session: *Protection of Public Spaces*



ASIAL Security Expo 2019 in Sydney on 24-26th July

Visit us on *Stand C13 Leda Security Products*

New Securabike Handbook

LEDA/Securabike is pleased to announce the release of our ninth edition of our *Bicycle Parking and Security Handbook*.

This comprehensive and informative handbook has been a favourite in architectural libraries. You may download a copy from www.ledasecurity.com.au website's download



Bicycle Parking & End-Of-Journey Facilities

section or email sales@ledasecurity.com.au asking for a copy.



LEDA Employees

LEDA is very fortunate to have some very talented technical staff working at our branches around Australia who not only install and commission LEDA's automated products but then maintain and service them.

At our Sydney office (Northmead) we have two very good techs (Electricians) who are Father and Son (Joey Alger and Joselito Alger). While they normally work independently, they also work together on larger projects where a team is required.



From left to right, Joey & Joselito Alger



MESSAGE FROM THE CEO



With the end of financial year upon us, we have taken stock of our position as the market leader in mechanical perimeter security/access control products.

It is pleasing to see we are on track to report another record year. As can be seen from articles in this issue of *Perimeter*, we have completed some significant projects from repeat clients requiring our specialised gates to HVM (Hostile Vehicle Mitigation) bollards for *Canberra Metro* and *Bankwest Stadium*.

More and more Australian clients, councils and governments are realizing the importance of effective physical protection stopping hostile vehicles' intrusion. We are getting numerous enquiries for impact rated/engineered solutions from all corners of the nation and we could forecast that Australian perimeter security market demand is rapidly increasing. Leda has been instrumental in developing a range of engineered impact rated product solutions to meet Australian HVM market demands. And at the same time Leda is the only company in Australia to manufacture PAS rated products locally.

I asked our Founder and Managing Director, David Matthews to draw on his 25 years of experience in perimeter security and provide some insights on *Protecting Public Spaces*, and in particular the issue of *Certified versus Engineered Solution*. I trust you will find David's observations helpful in navigating your way through this issue and that LEDA have the knowledge, engineering expertise and project management skills to assist with finding the best solution for your situation.

We continue to expand our bicycle parking division and we are seeing growth both nationally and internationally. Our most popular Securabike CBR45C continues to be the frontrunner for it's ease of assembly and functionality, making it the popular choice for *End of Journey facilities*. As can be seen from the various bike projects shown in this issue of *Perimeter*, they provide clean, neat and secure bicycle parking solutions.

LEDA will be exhibiting at *AuSec Canberra* – 9th of July and facilitating 'Think Tank' interactive session on *Protection of Public Spaces*. We are also exhibiting at the *ASIAL Security Expo Sydney* – 24, 25 and 26th of July. We are excited and look forward to attending the two major security expos. Please visit our stand to know more about our product range.

Len Place

Chief Executive Officer

Head Office

Design, Engineering,
Manufacturing and
Accounts
18 Reliance Drive,
Tuggerah NSW 2259
Tel: (02) 8413 3430

National Sales

1300 780 450



PUBLISHED BY: Leda Security Products Pty Ltd ABN 23 067 258 235



Sales Offices

New South Wales

8/185 Briens Road,
Northmead, NSW 2152
Tel: (02) 8413 3410

Queensland

2/387 Lytton Road
Morningside, QLD 4170
Tel: (07) 3613 8270

Victoria

2/89 Enterprise Way
Sunshine West VIC 3020
Tel: (03) 8399 8150

South Australia

1/5 Tooronga Ave
Edwardstown, SA 5039
Tel: (08) 8374 3266

Western Australia

1/27 Century Road
Malaga WA 6090
Tel: (08) 6430 1670

Follow us



LEDA



ISSUE 53 | JUNE 2019

LEDA SECURITY PRODUCTS

perimeter

16